



Pepinini
Minerals limited

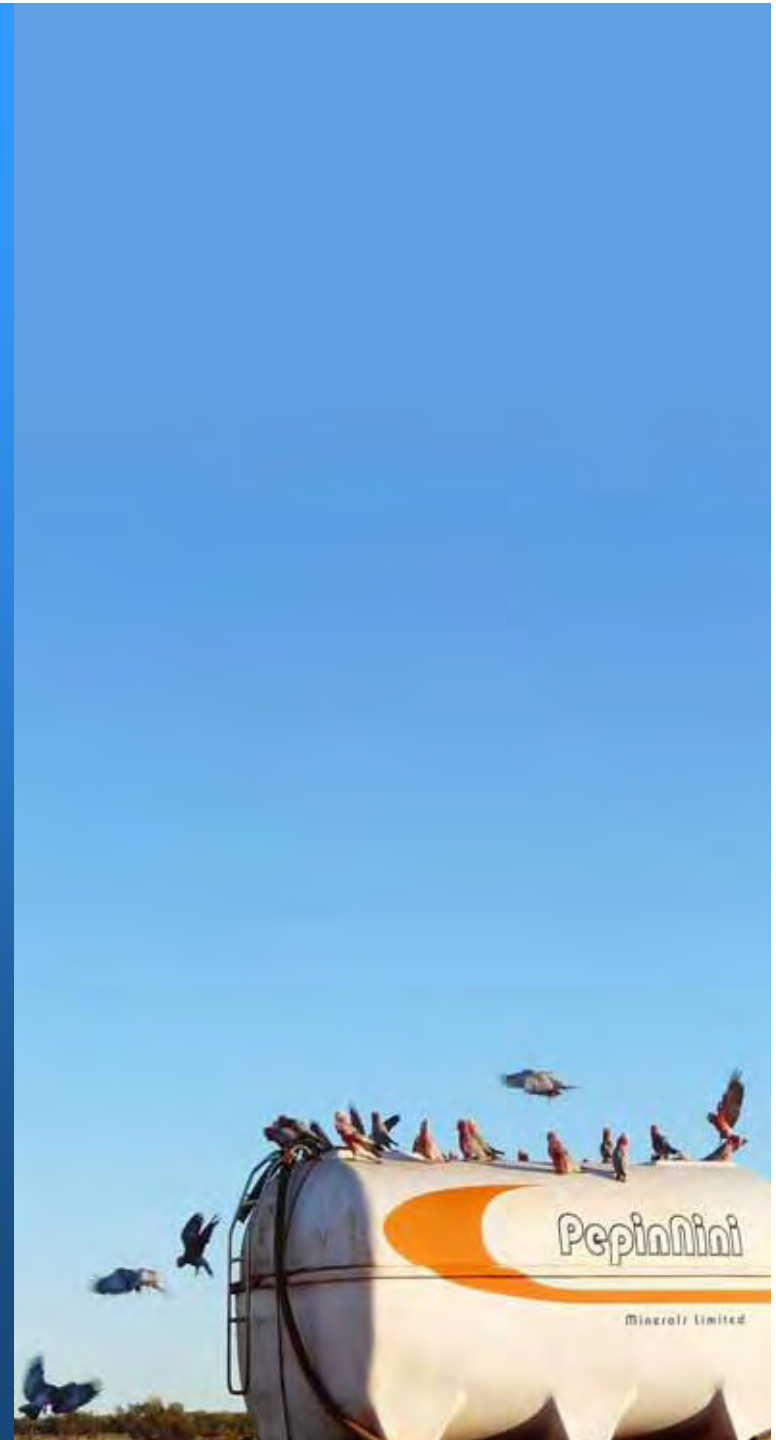
Diversified Near Term Production Australian Exploration Company



Capital Structure

(26th October, 2009)

- 78,202,499 shares on issue
- Currently 2,012 shareholders
- 55% of issued capital held by top 20 shareholders
- Currently capitalised at AUD\$27 million
- Current cash AUD\$8.8 million
(+ AUD\$6 million expenditure from Sinosteel)



Corporate



Norman Kennedy
Chairman & Managing Director
Exploration Geologist for over 30 years



Christopher Lambert
Non-executive Director
London based financial background



Rebecca Holland-Kennedy
Executive Director & Company Secretary
Administration and Exploration Geologist
for over 30 years



Albert Harris
Non-executive Director
Management of Petroleum and
Exploration Industry companies
for over 55 years

Management

Phil Clifford

Exploration Consultant
Ex Rio-Tinto

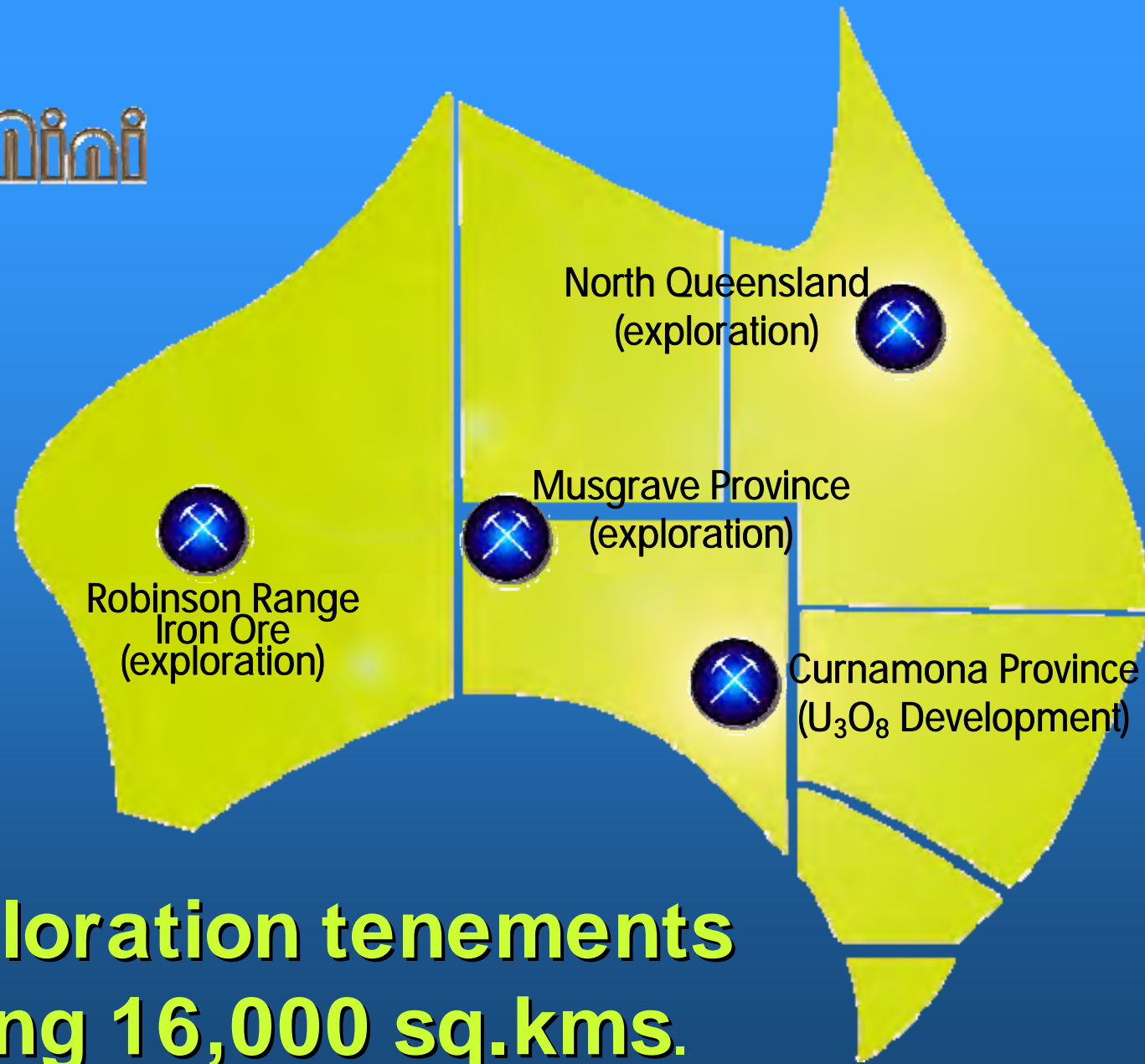
Dr Lachlan Rutherford

Exploration Manager – Musgrave SA
Ex Primary Industries & Resources SA

Colin Skidmore

Exploration Manager – Uranium and New Projects
Ex Uranium One (Honeymoon)

Pepinini



**36 exploration tenements
covering 16,000 sq.kms.**

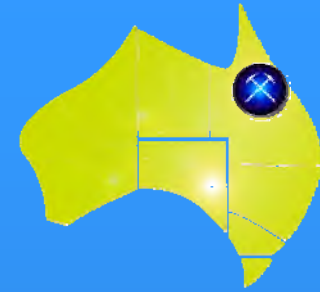
Queensland Projects

100% interest in
24 tenements

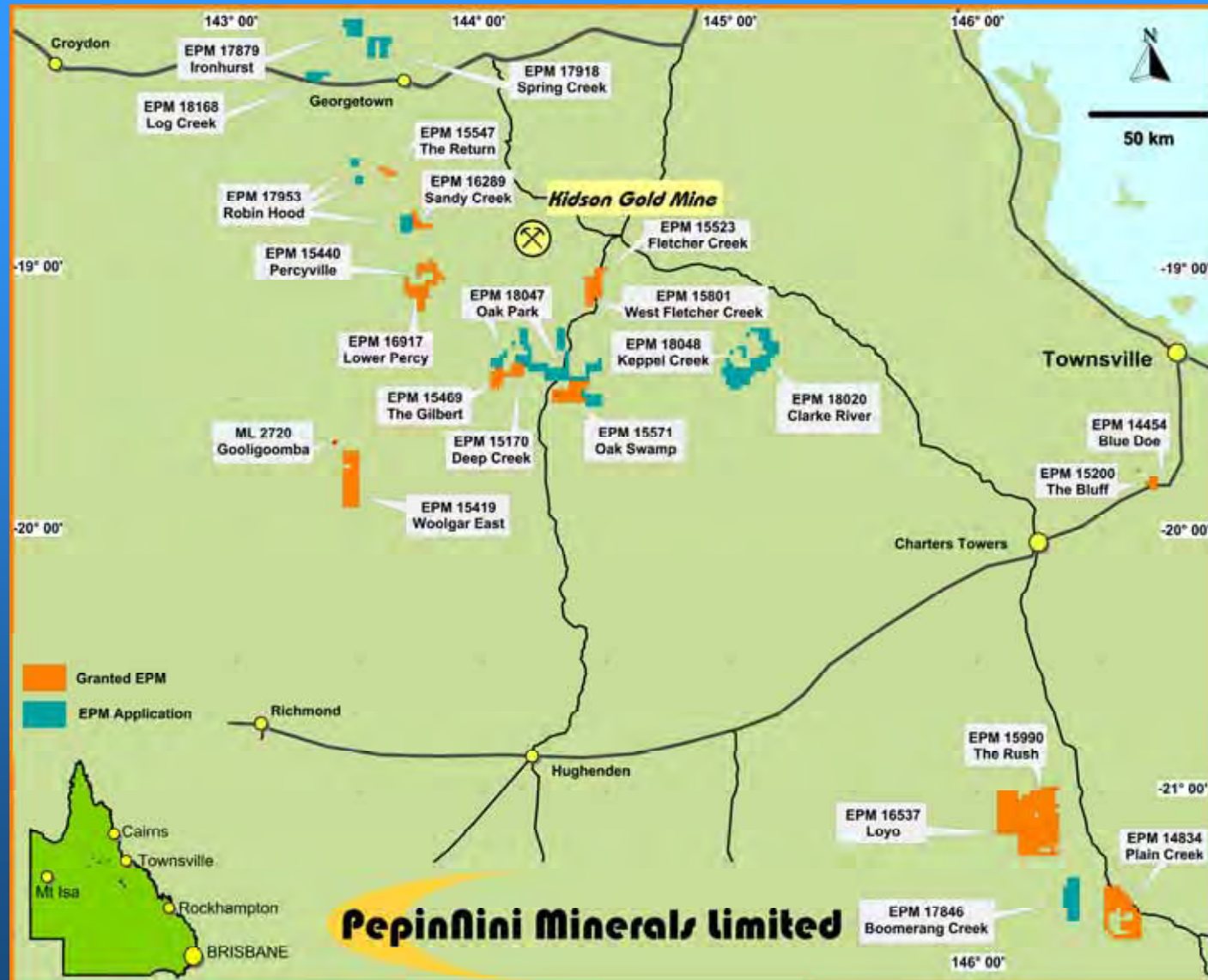
2,773
sq.kms

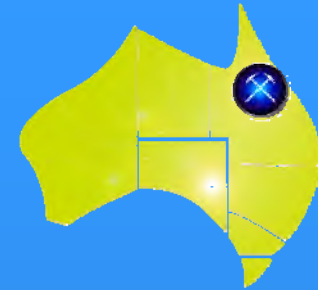


Pepinini

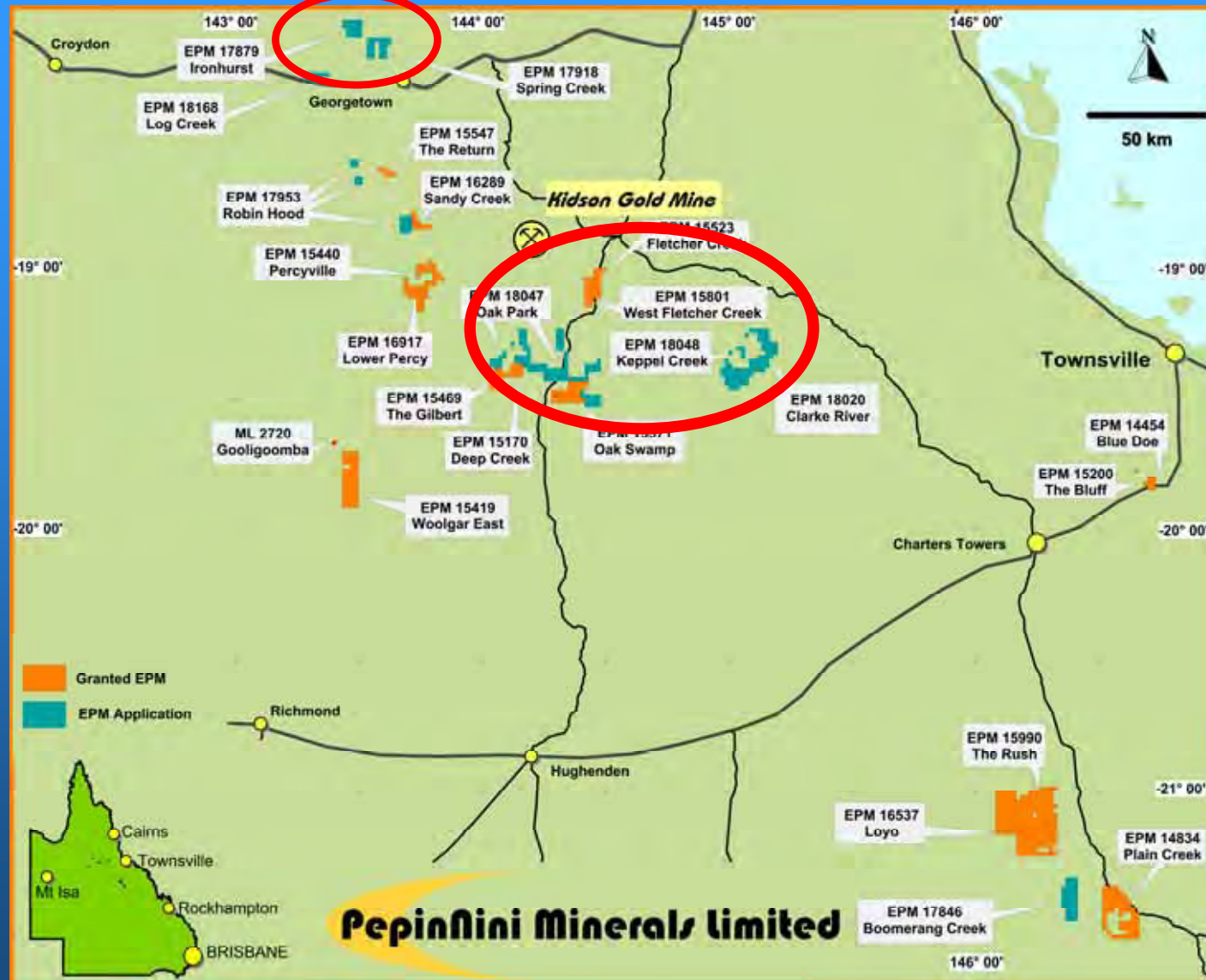


The tenements are prospective for gold, copper, base metals, uranium, phosphate and potash





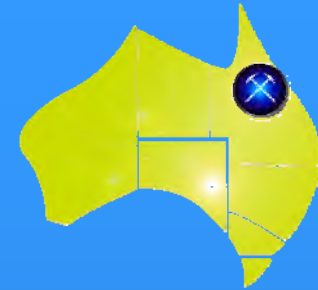
uranium



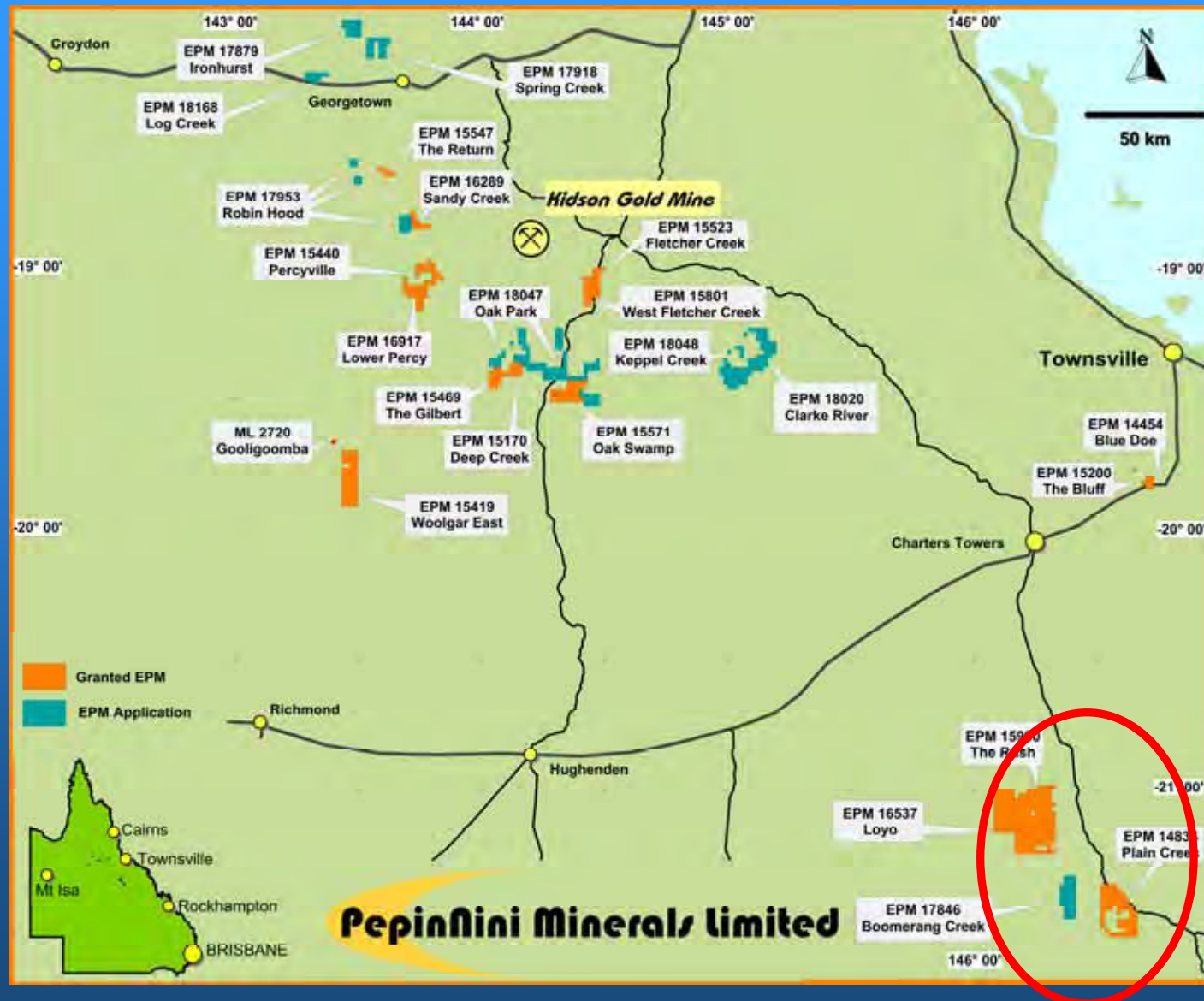
Uranium Targets

- Uranium occurrences which have been inadequately tested by previous explorers and favourable geological settings for uranium mineralisation have been identified in 10 tenements
- Principal targets are hard rock volcanic type deposits similar to the nearby Maureen and Ben Lomond Uranium Deposits
- Ben Lomond represents one of the highest value per tonne uranium resources in Australia with an average grade of 0.25% U_3O_8 and molybdenum credits of 0.15%





uranium,
phosphate
and
potash



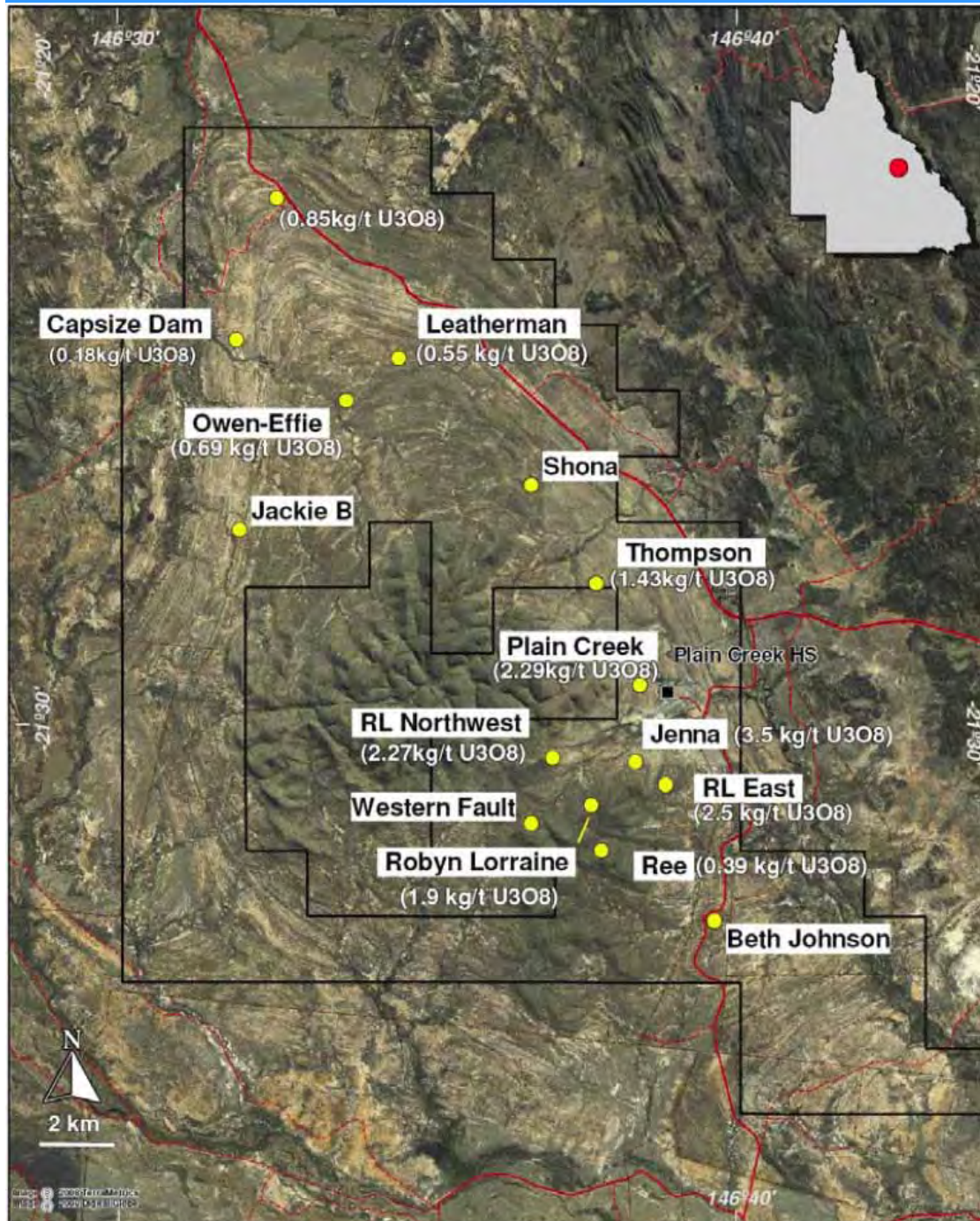
Uranium Phosphate Potash Targets

- Numerous Uranium enriched Phosphate Rock prospects previously identified within EPM 14834 Plain Creek. Additional potential within Loyo and Rush tenements
- Phosphate grades of up to 27% have been reported by previous explorers together with uranium grades of up to 0.42%



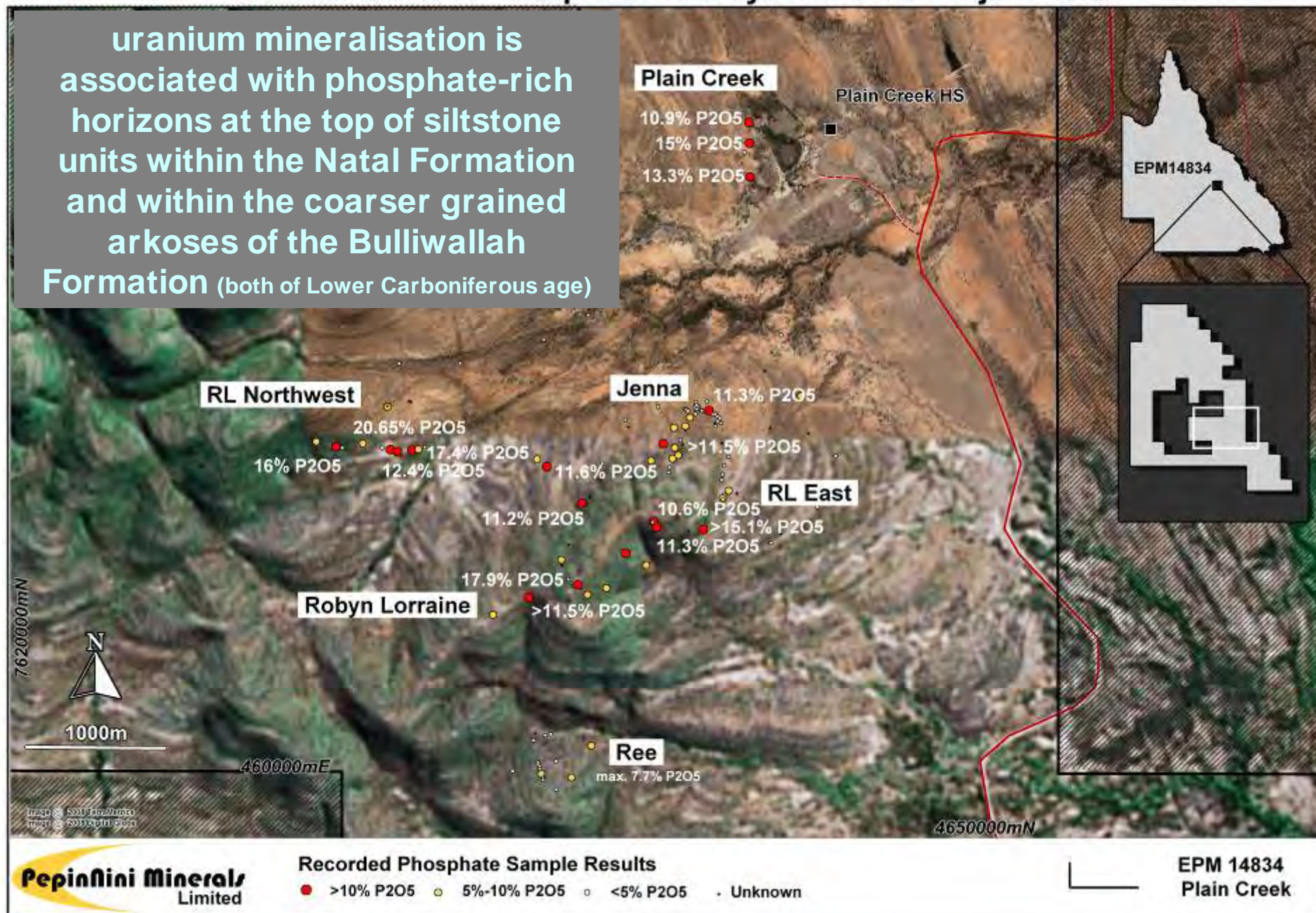
Plain Creek Area

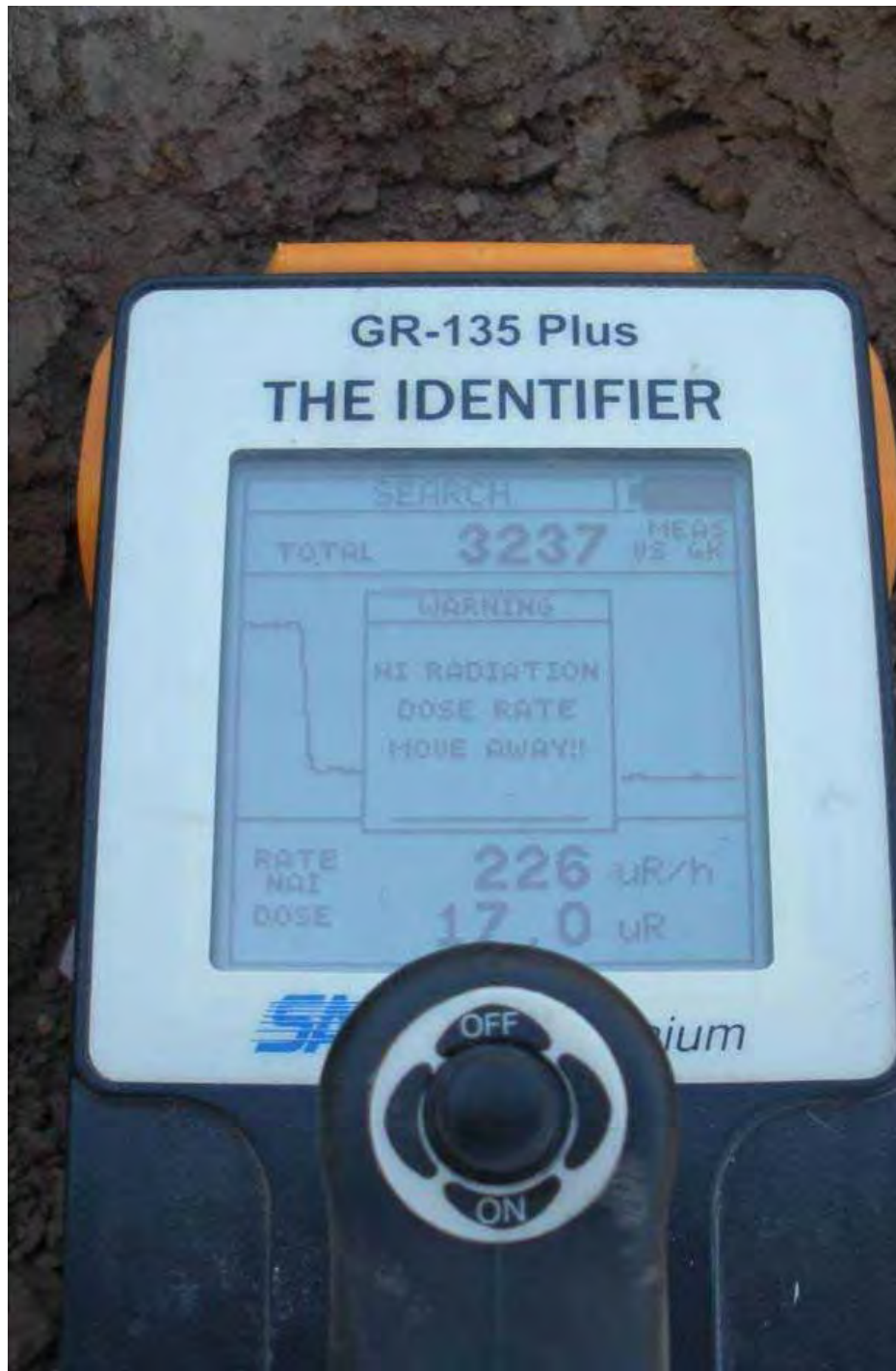
- Located within the Devonian Carboniferous Drummond Basin
- Approx. 300kms by sealed road to the port of Townsville
- Field reconnaissance and sampling programs have confirmed high grade uranium, phosphate and potash potential



Plain Creek Rock Phosphate - Robyn Lorraine Project Area

uranium mineralisation is associated with phosphate-rich horizons at the top of siltstone units within the Natal Formation and within the coarser grained arkoses of the Bulliwallah Formation (both of Lower Carboniferous age)





127 Sites have been inspected and 138 surface samples collected for assays

Highest Uranium

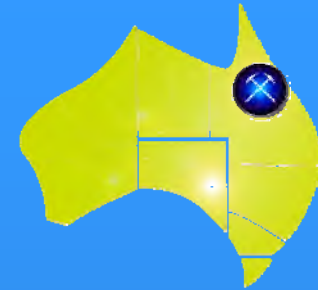
3,513 ppm U_3O_8 from Sassafras Creek Prospect

Highest Phosphate

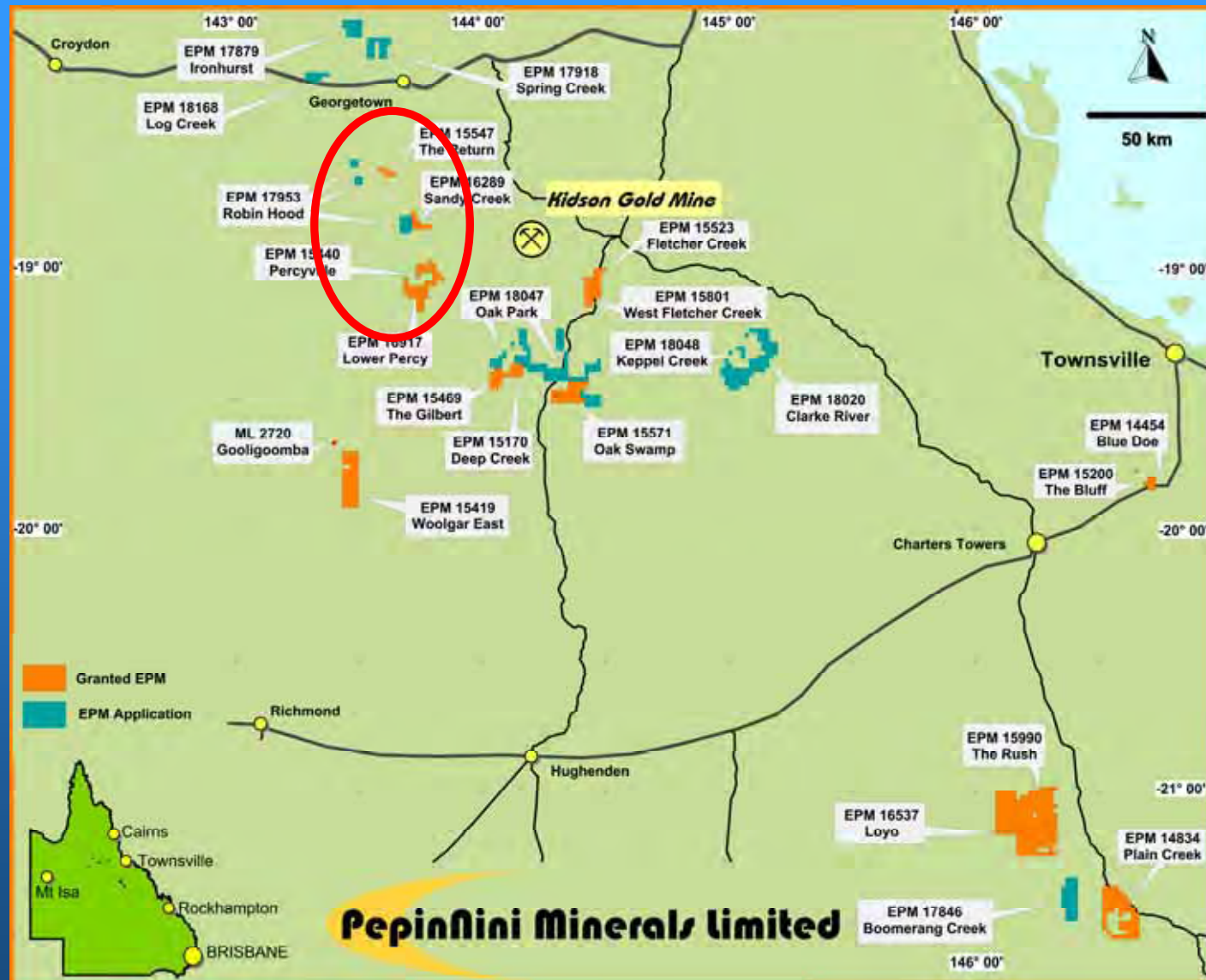
21.4% P_2O_5 from Robyn Lorraine West Prospect

Highest Potash

5.8% from Sassafras Creek & Homestead Prospects



Gold and Base Metals

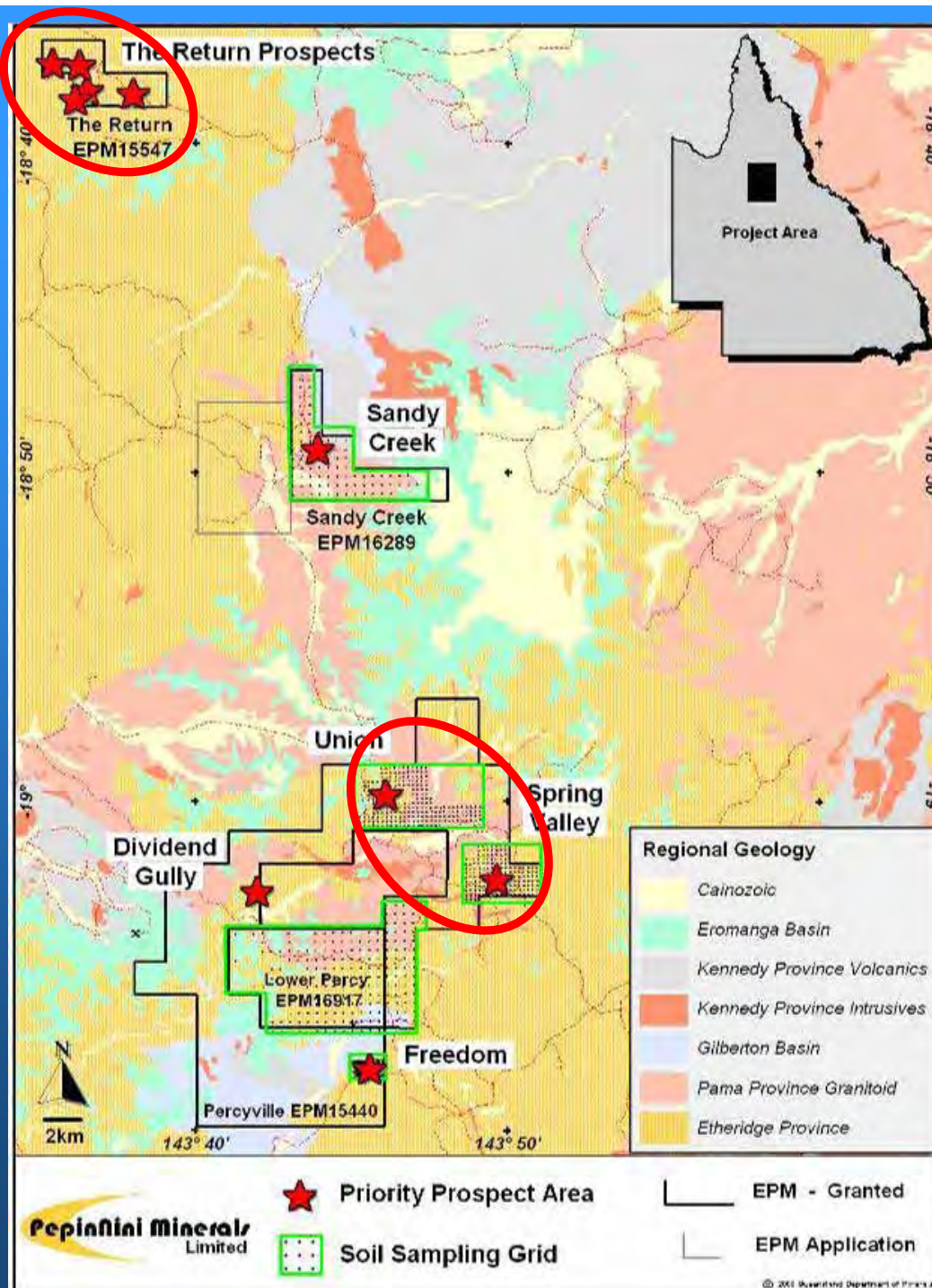




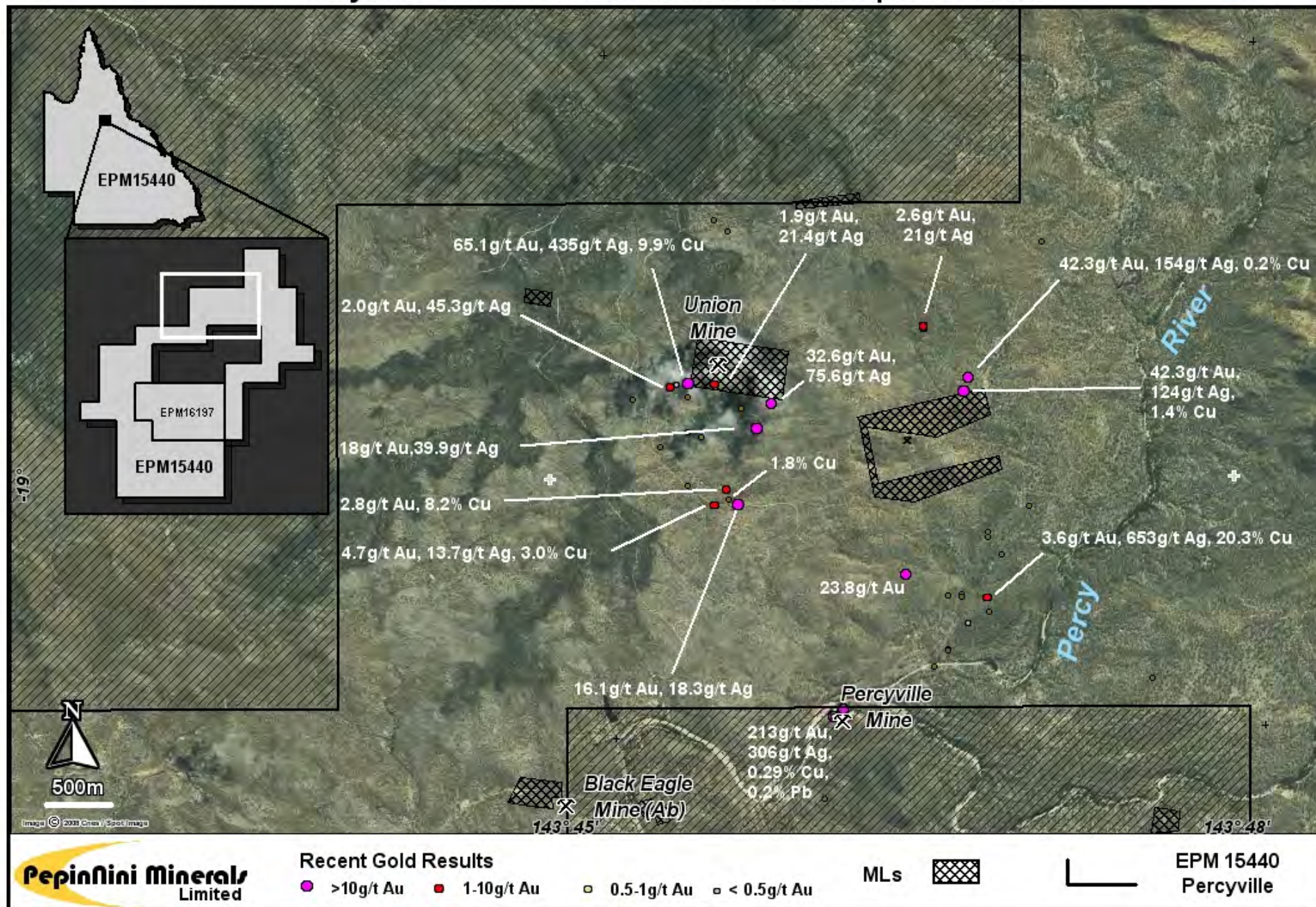
Gold & Base Metals

- Widespread copper, gold, silver and lead mineralisation has been identified in rock chip samples
- **335 g/t gold**, 85 g/t silver, 0.2% copper & 2.8% lead
- 54 g/t gold, 870 g/t silver, **32.8% copper**
- 65.1g/t gold, 435g/t silver, 9.98% copper
- 3.6g/t gold, 653g/t silver, 20.30% copper
- 5.65g/t gold, 42g/t silver, 5.72% copper
- 0.7g/t gold, 22g/t silver, 16.90% copper
- 3.72g/t gold, 732g/t silver, 13.8% copper, 1.07% lead
- 0.6g/t gold, 637g/t silver, 11.25% copper, 3.4% lead
- 0.27g/t gold, 165g/t silver, 10.8% lead
- 1.63g/t gold, **957g/t silver**, **64.7% lead**

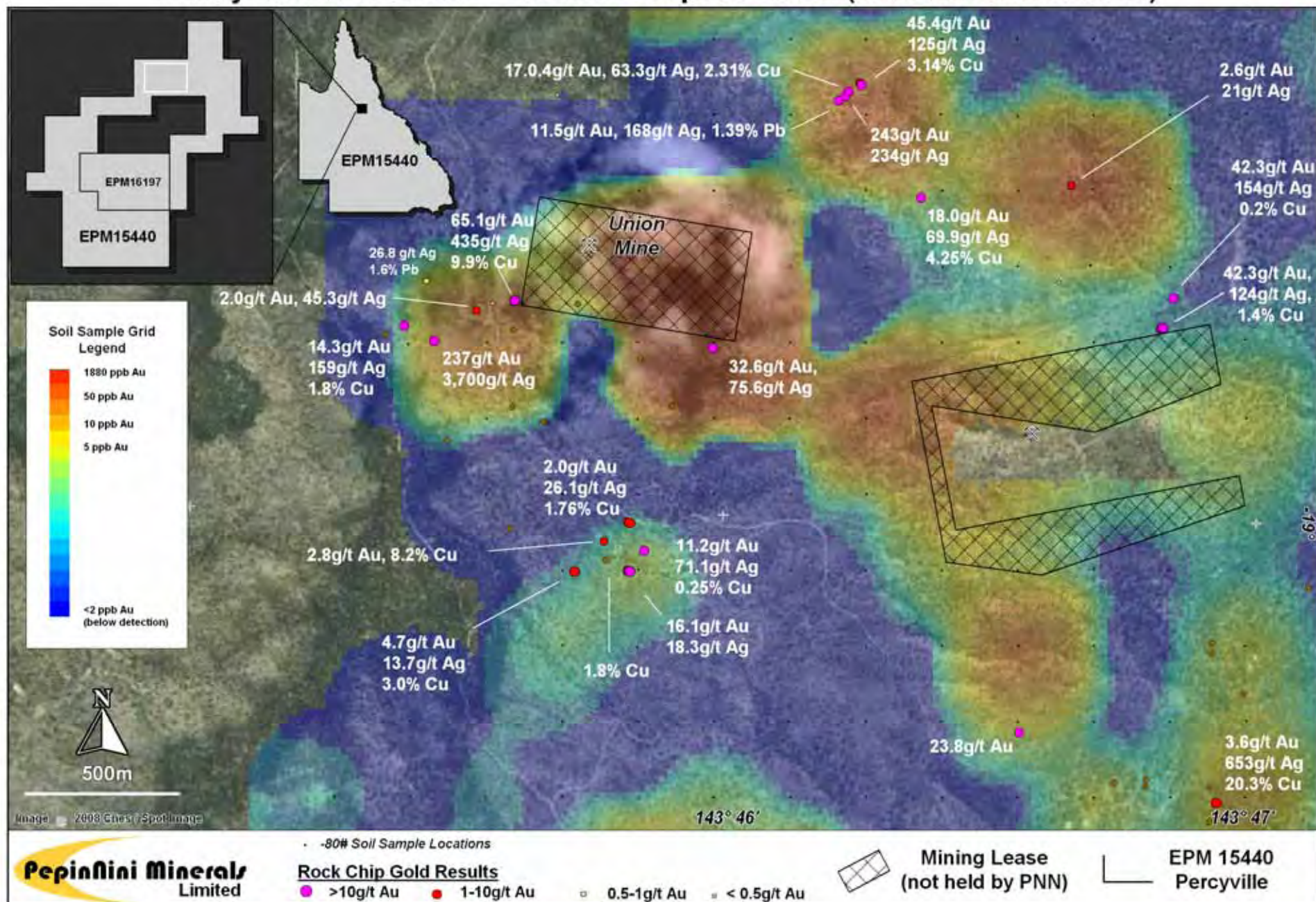
Gold & Base Metals



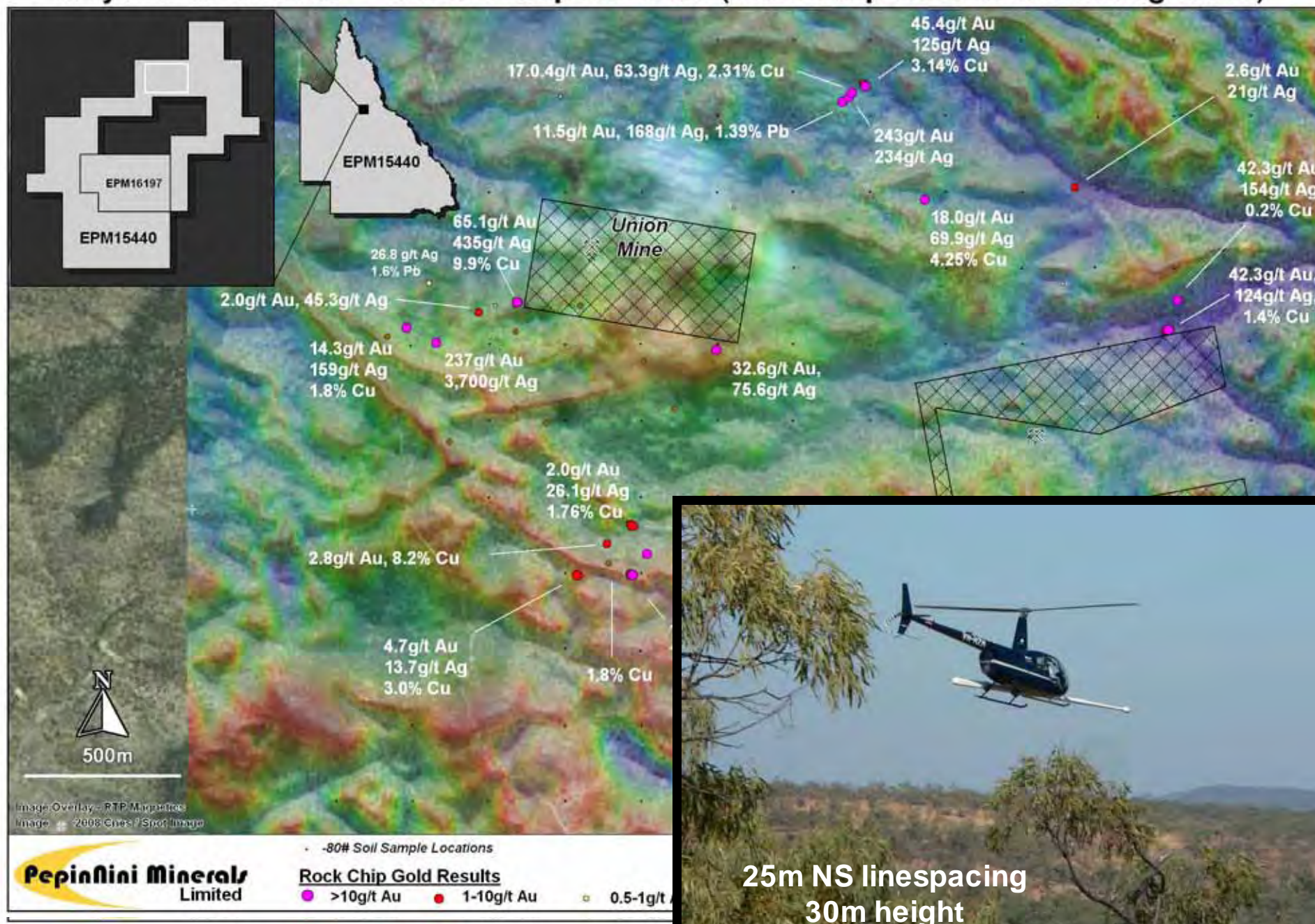
Percyville EPM - Union Mine Rock Sample Results



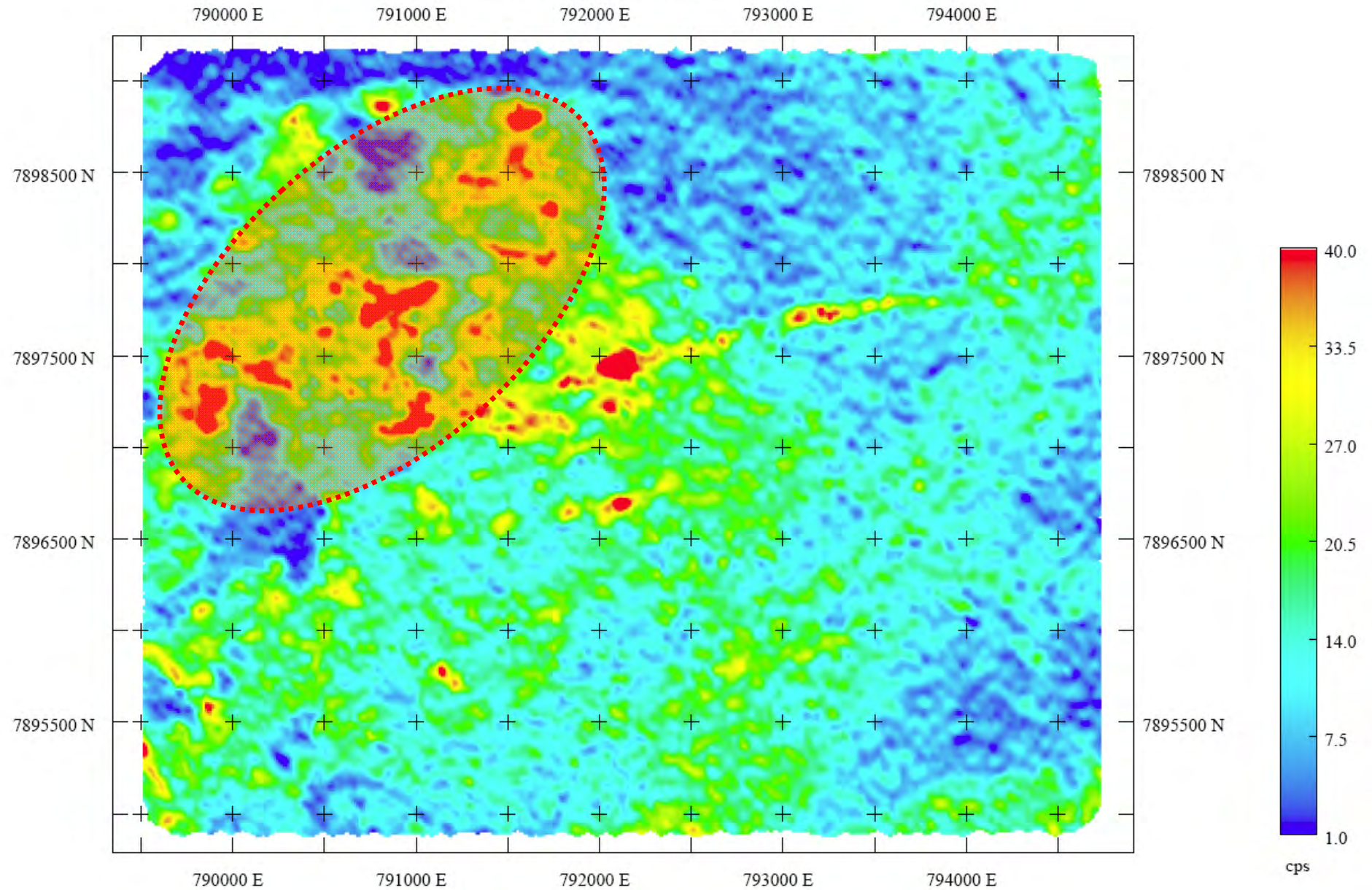
Percyville EPM15440 - Union Prospect Detail (Rock & Soil Results)



Percyville EPM15440 - Union Prospect Detail (Rock Chip Results & Helimagnetics)



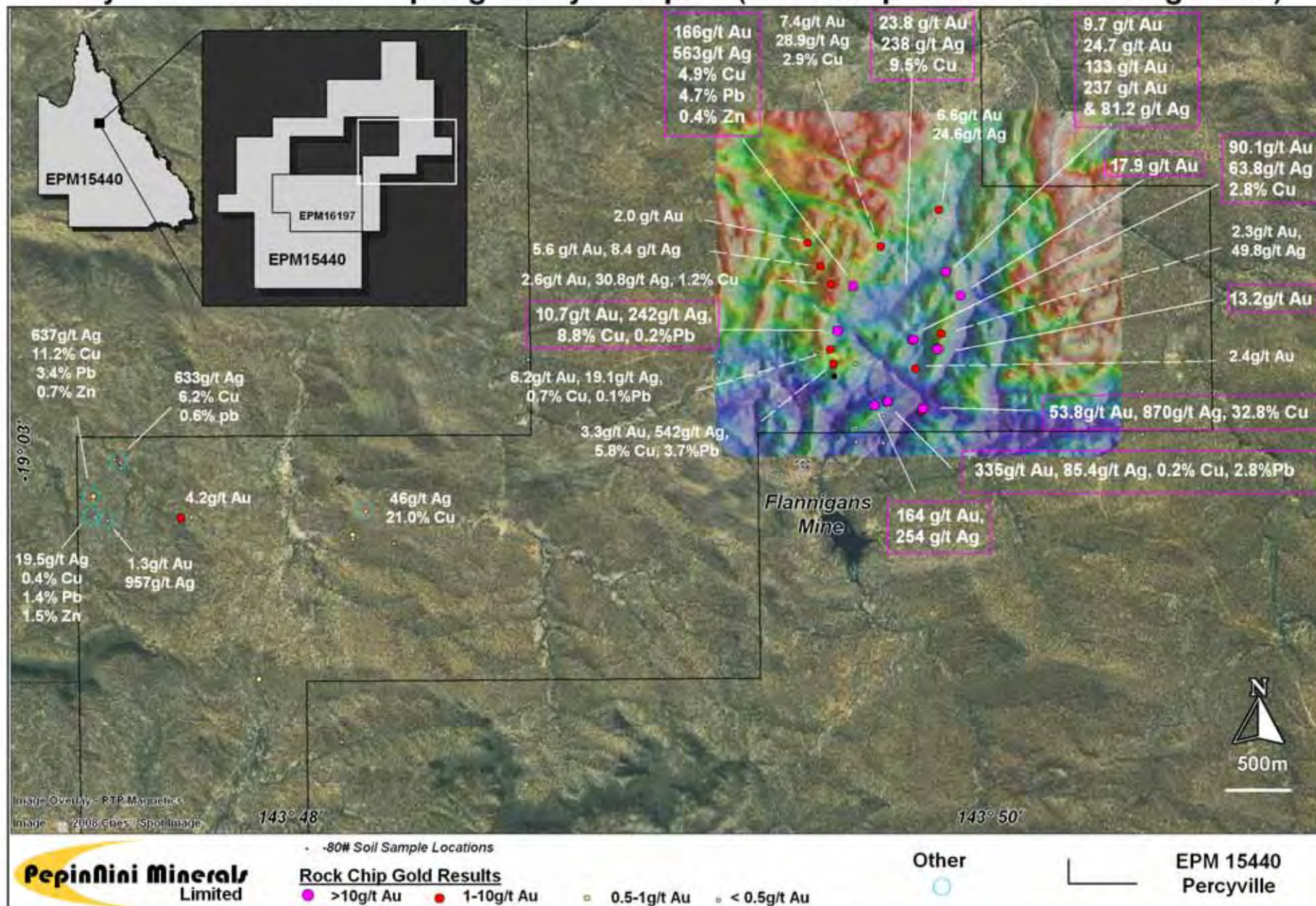
Union Project Uranium

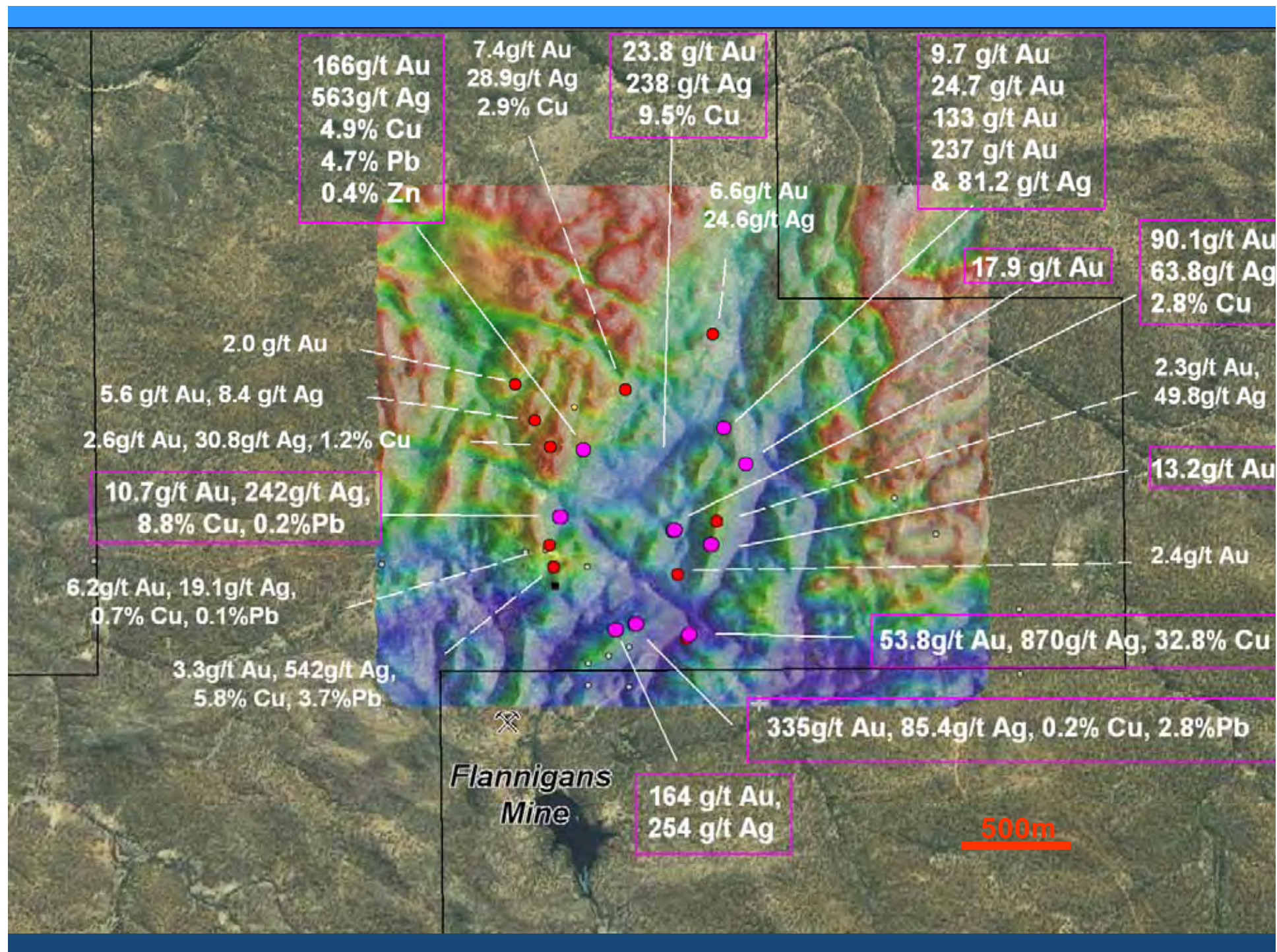




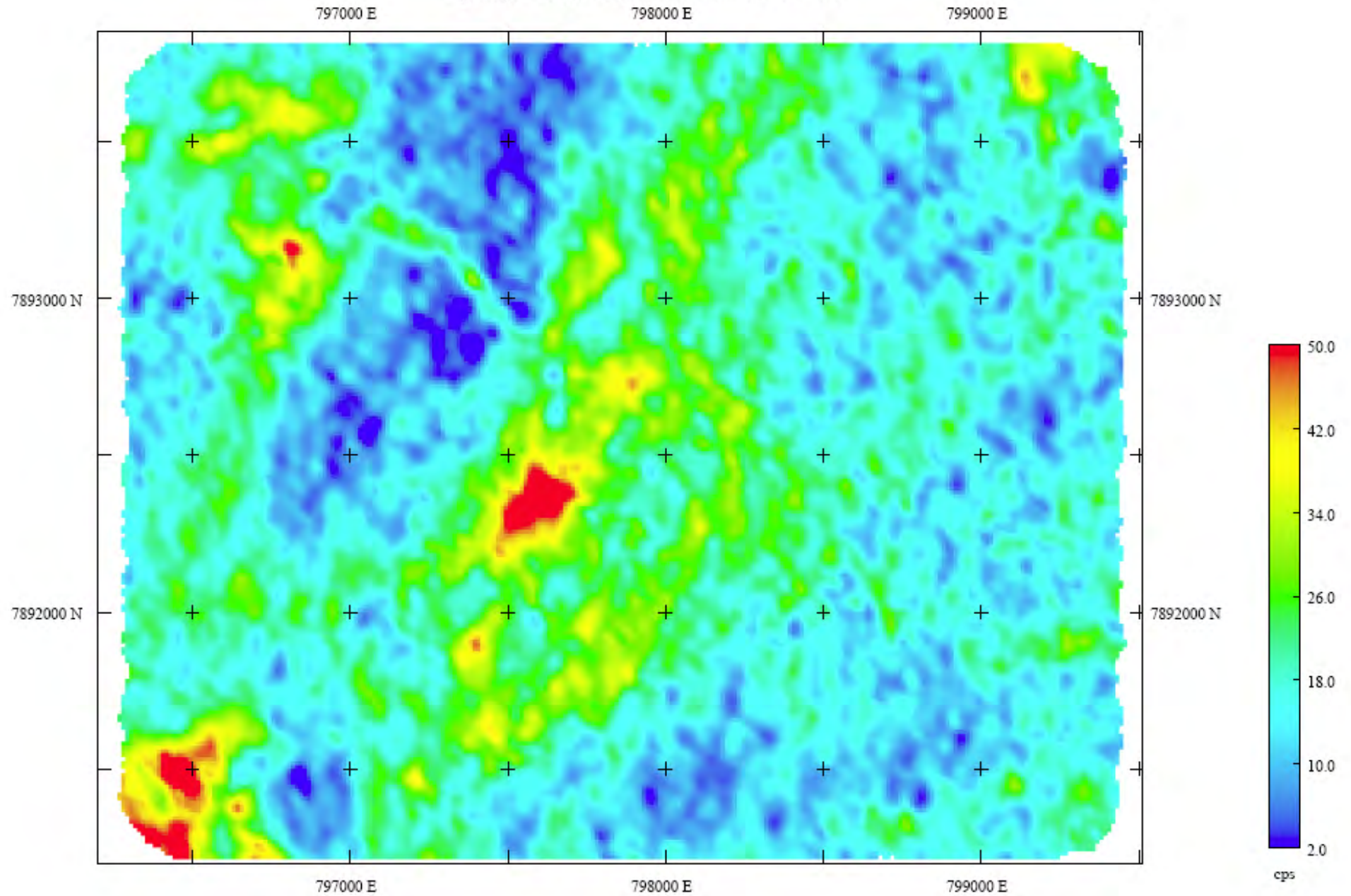
**Primary quartz-chlorite-sulphide
ore from the Union Prospect**

Percyville EPM15440 - Spring Valley Prospect (Rock Chip Results & Helimagnetics)





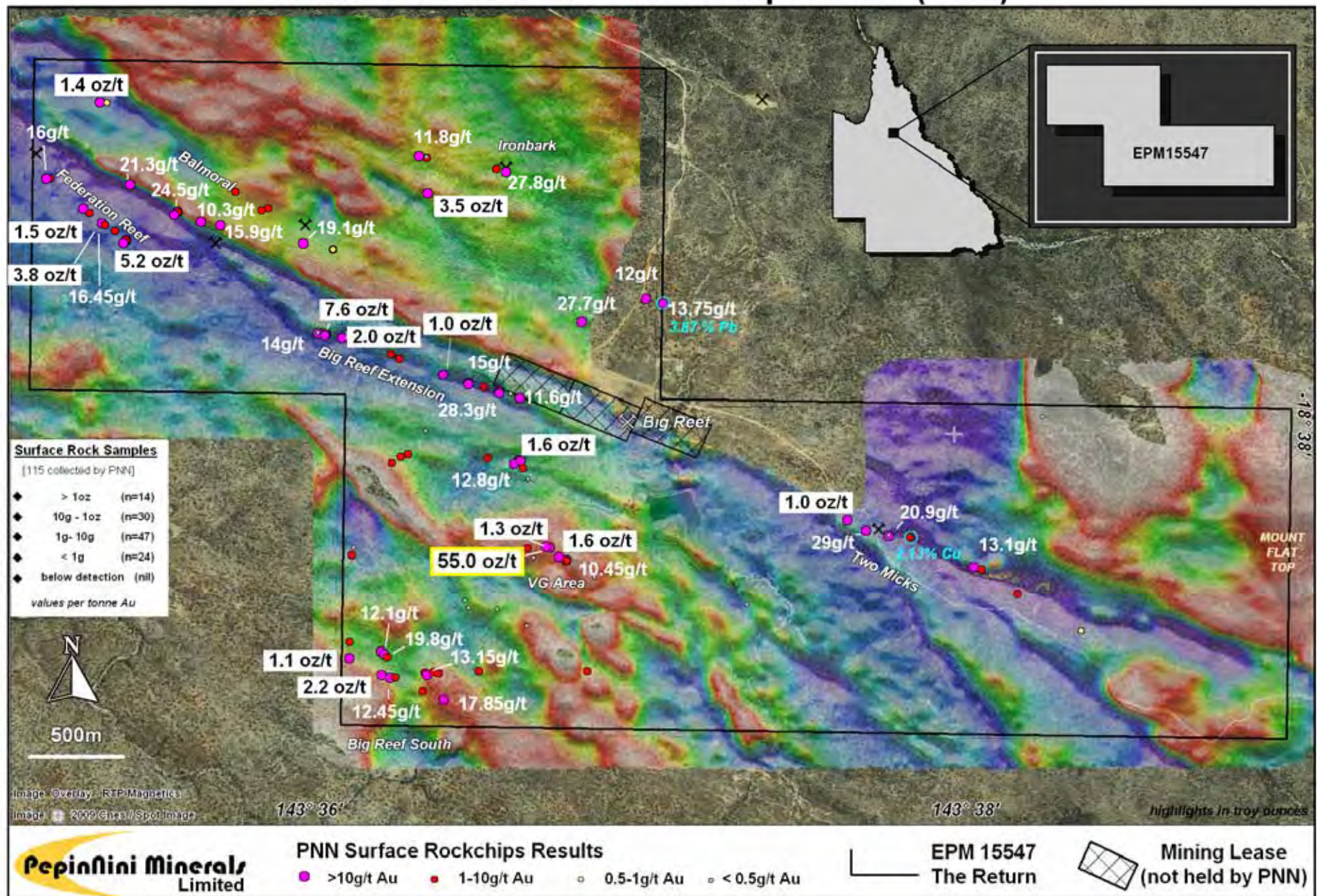
SpringValley Project Uranium Channel



The Return EPM - Recent Polymetallic Rock Sample Results (Nov. 2008)



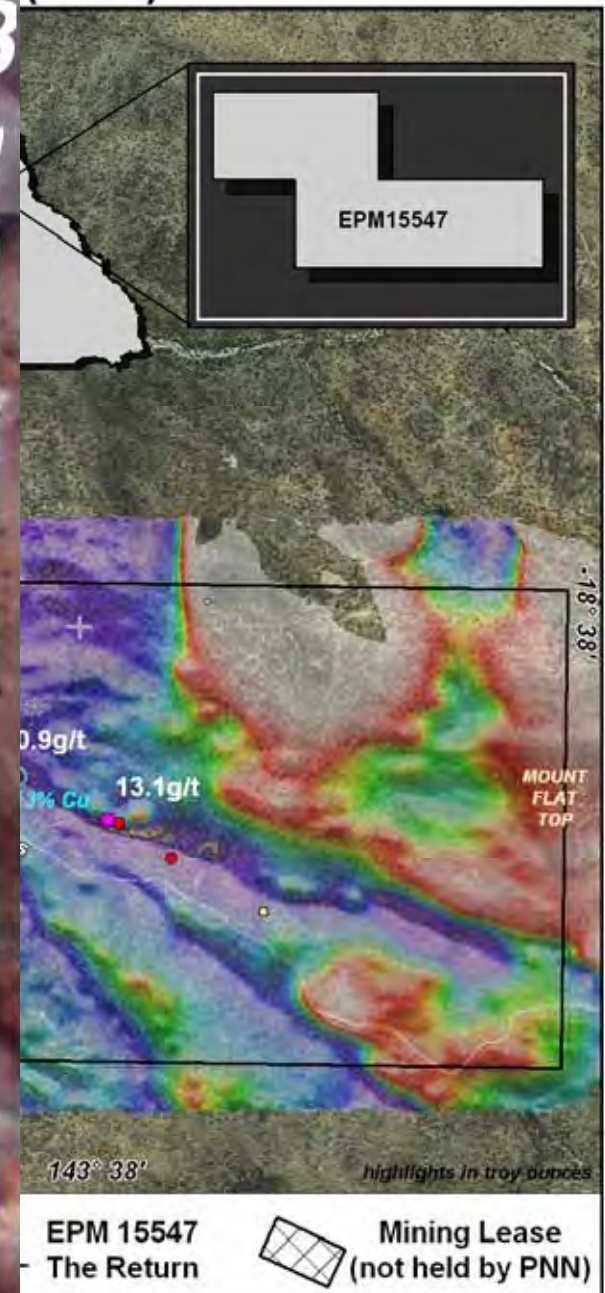
The Return EPM15547 - Rock Chip Results (Gold)



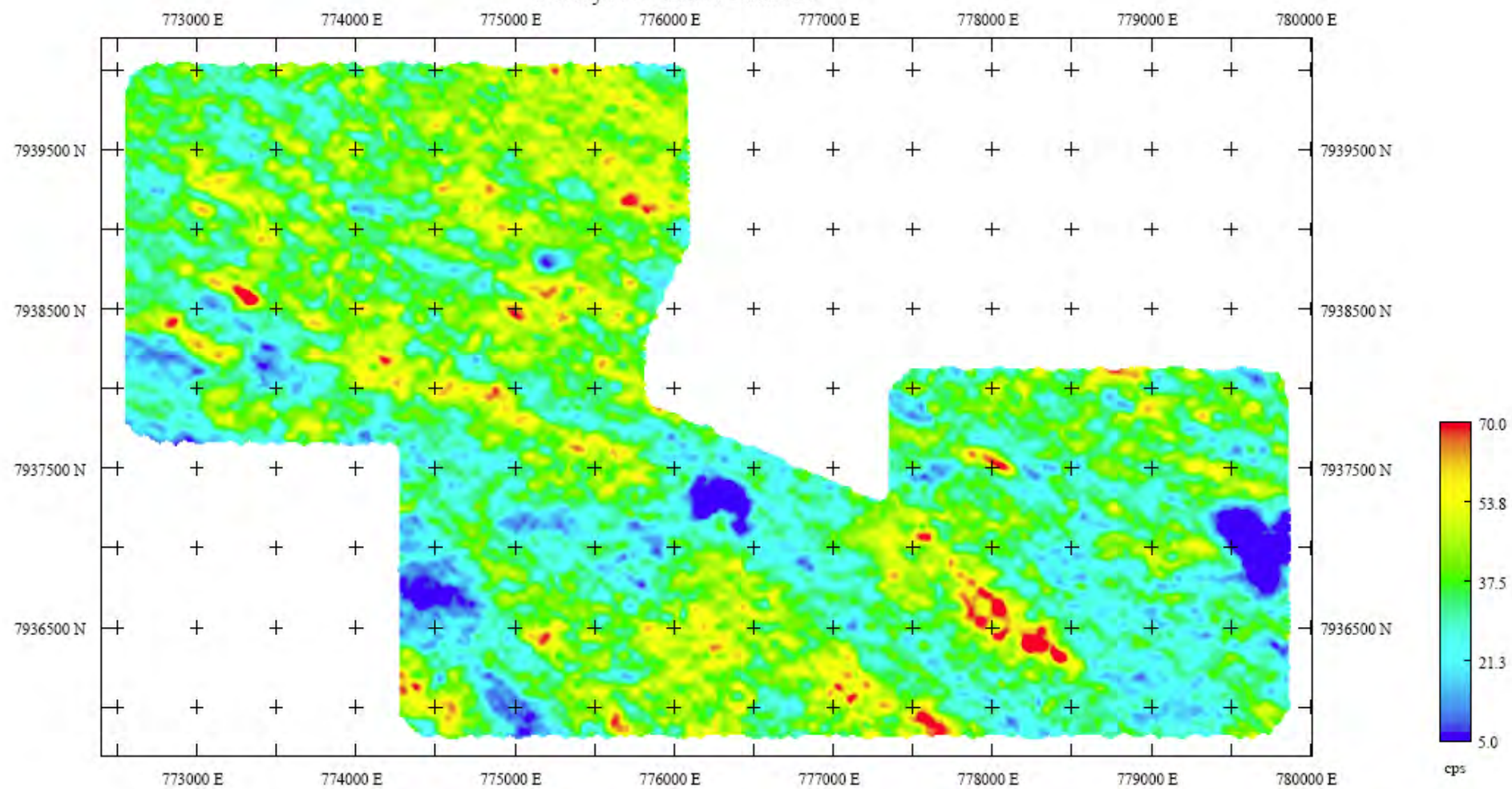
The Return EPM15547 (Gold)

SampNo: 77883
1710 ppm Au
(55.0 oz/t)

80% of the 115 surface samples that have been collected by PepinNini for assays on this tenement have returned economic grades of gold with 15% returning more than 1oz/t



Forsyth Uranium Channel



Queensland Project Summary

- 100% interest in 24 tenements covering 2,773 sq kms
- Confirmed high grade gold, copper, uranium, phosphate and potash potential
- Priority high grade shallow gold targets ready to drill





Thank You

Disclaimer:

- The information in this presentation is published to inform you about PepinNini Minerals Limited and its activities. All reasonable effort has been made to provide accurate information, but we do not warrant or represent its accuracy and we reserve the right to make changes to it at any time without notice.
- To the extent permitted by law, PepinNini Minerals Limited accepts no responsibility or liability for any losses or damages of any kind arising out of the use of any information contained in this presentation. Readers are advised to consult a stockbroker or professional adviser before making any investment decisions.
- The information in this presentation that relates to Exploration Results and Mineral Resources is based on information compiled by Norman Kennedy BSc MAusIMM. Norman Kennedy is the Managing Director of PepinNini Minerals Limited and has sufficient experience which is relevant to the style of mineralisation and type of deposit under consideration to qualify as a Competent Person as defined in the 2004 edition of the "Australasian Code for Reporting of Exploration Results, Mineral Resources and Ore Reserves". Norman Kennedy consents to the inclusion in the report of the matters based on his information in the form and context in which it appears

PepinNini