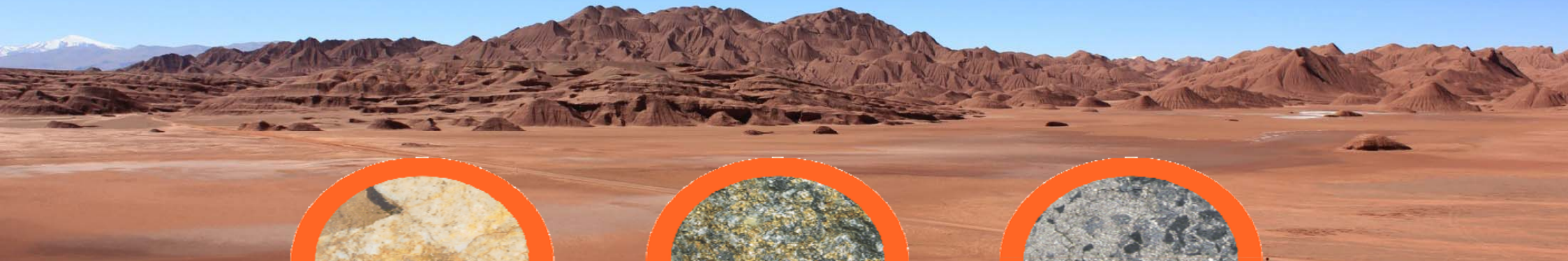




Rebecca Holland Kennedy  
Managing Director



Resources **riu**  
Investor Roadshow

**Sydney – Melbourne 27 – 29  
September 2016**

# Hard v Soft

## Spodumene



By Rob Lavinsky, iRocks.com

v

## Lithium Brine



***Brine projects have inherently lower costs and greater economies of scale***

—  
Deutsche Bank Market Research May 2016



We Explore

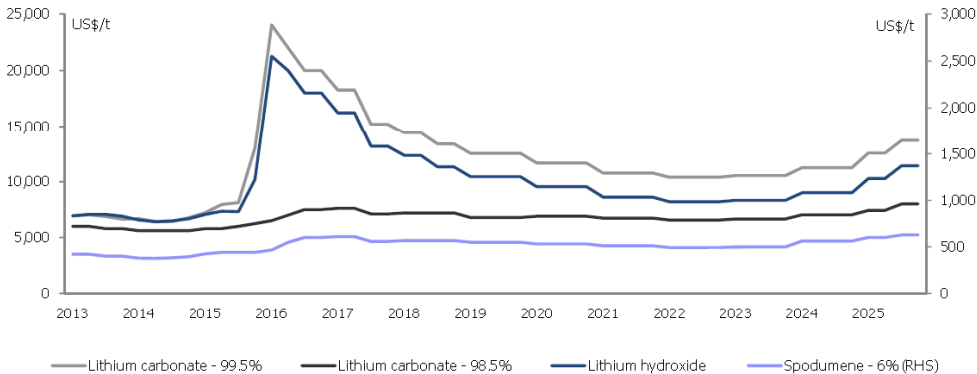
**Pepini**  
Minerals Limited

# Lithium demand – Batteries - Electric Vehicles – Alternate Energy



**We expect global lithium demand will increase from 181kt Lithium Carbonate Equivalent(LCE) in 2015 to 535kt LCE by 2025.**  
**Deutsch Bank Market Research – May 2016**

**76% of global lithium reserves are brine-based deposits -**  
**Deutsch Bank Market Research – May 2016**



**We believe brines will reclaim market share after 2018 and spodumene pricing will be linked to the marginal cost of a brine asset producing lithium carbonate, not the other way round**  
**Deutsch Bank Market Research – May 2016**



**We Explore**

# Why Argentina?

## ✓ Lithium Triangle location



Source: Deutsche Bank; Company data; USGS

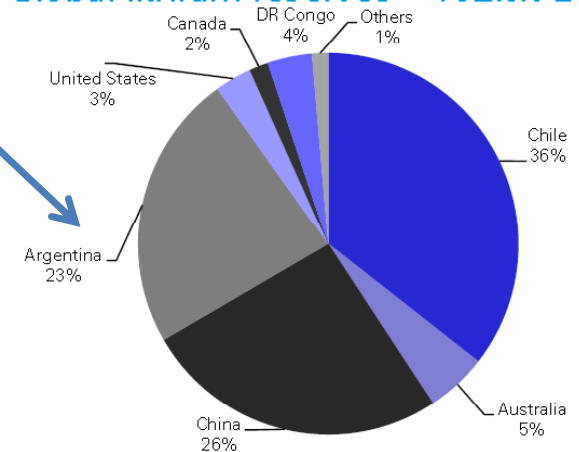
## ✓ Large Reserves



## ✓ High Grade Reserves

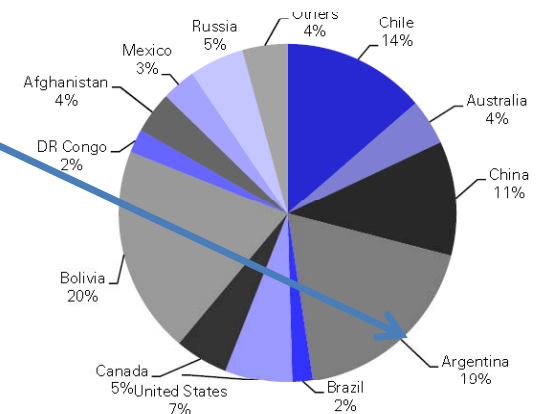
- ✓ Change of government in Argentina in November 2015
- ✓ Floating exchange rate for the peso has liberated foreign investment inflow

## Global lithium reserves – 102Mt LCE



Source: Deutsche Bank; USGS; Company data

## Global lithium reserves – 273Mt LCE



Source: Deutsche Bank; USGS; Company data

Source – Deutsche Bank Markets Research – May 2016

**Pepini**  
Minerals Limited



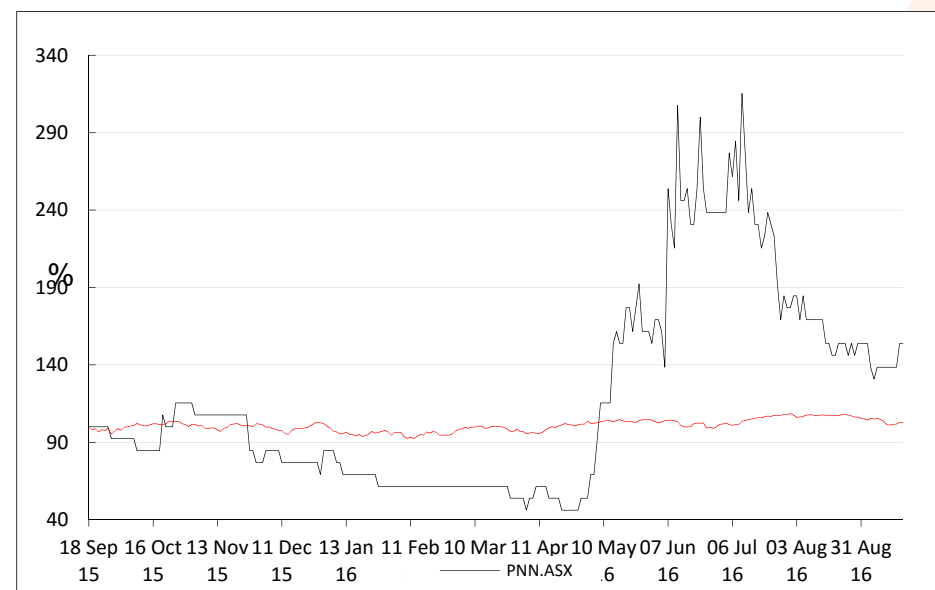
We Explore

# PepinNini – the explorer of choice

***Australian Exploration Company ASX  
listed for 11 years -***

- ☐ Diverse commodity portfolio in Australia and Argentina
- ☐ Debt free
- ☐ Resourceful experienced explorer

September 2016	ASX:PNN
Shares on issue	309,739,774
Options on issue(unquoted)	1,200,000
Market Cap(range)	\$6 -10 million



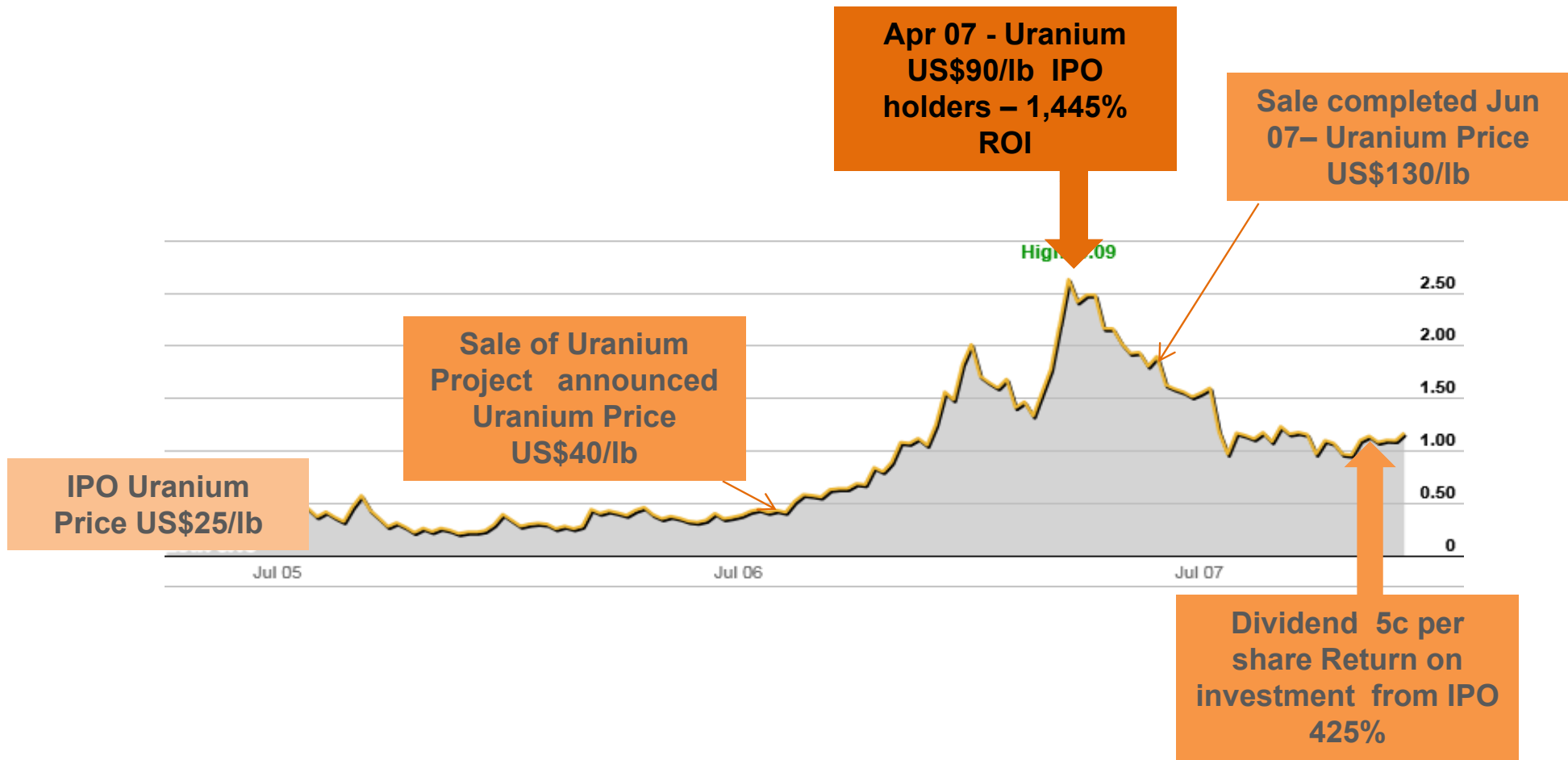
***Share price – last 12 months***



**We Explore**

**PepinNini**  
Minerals Limited

# PepinNini track record for adapting to commodity cycle



# PepinNini – Exploration Projects

## AUSTRALIA



## ARGENTINA



We Explore

**PepinNini**  
Minerals Limited

# PepinNini in Salta Province



- ✓ Large unexplored areas with Lithium Brine potential
- ✓ Salta mining friendly province
- ✓ PepinNini established in Salta since 2010



*Rebecca Holland-Kennedy with Salta Mining Secretary - Ricardo Salas*



We Explore

# Lithium Exploration Projects



- ❑ Granted 8 mining leases(minas) in July 2016
- ❑ Currently 12 granted minas total 28,141ha
- ❑ Increased tenure in process – 12,251ha since July 16 – *PNN said we would and we have done this*



We Explore

**Pepinini**  
Minerals Limited

# PepinNini SA Projects – Salta Province



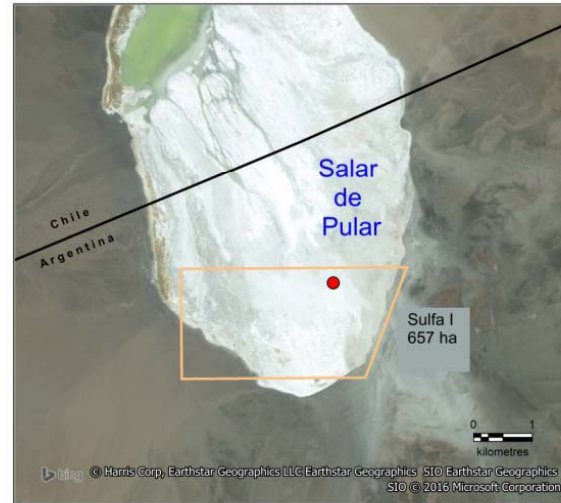
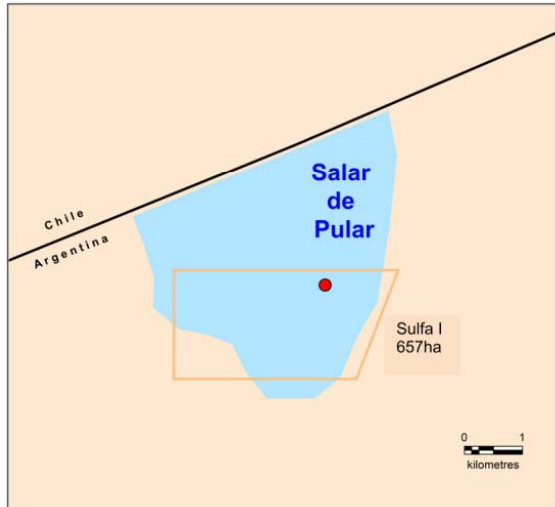
- Multiple projects
  - Lithium
  - Copper - Gold
- Strategic locations
- Potential for Lithium product blends



We Explore

**PepinNini**  
Minerals Limited

# Salar de Pular – Exploration Commenced



- Salar de Pular is located close to Salar de Atacama which is the world's largest and purest active source of lithium

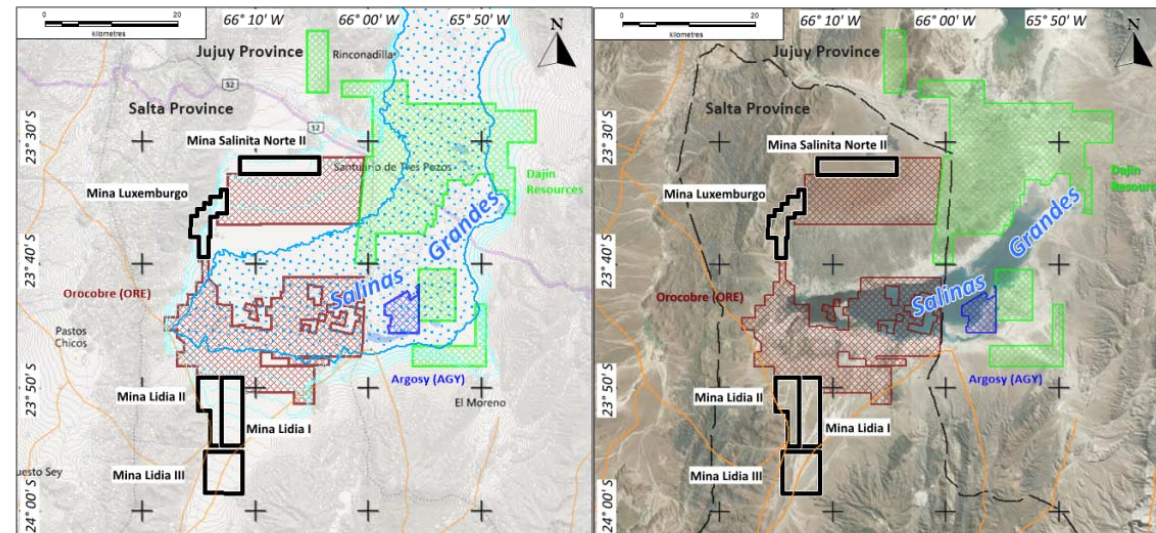


We Explore

**Pepinini**  
Minerals Limited

# Salinas Grandes – Increased tenure

Salinas Grandes Project



Note : Key Competitor project areas relative to Pepinini Minas  
Outlines of areas have been compiled from various public release presentations.



- ❑ 14,943ha over 5 mining leases(mina) held by PNN SA
- ❑ Salinas Grandes is the second largest Salar in the world 6,000km<sup>2</sup>
- ❑ Grade quoted as 795mg/l by other developers – good grade

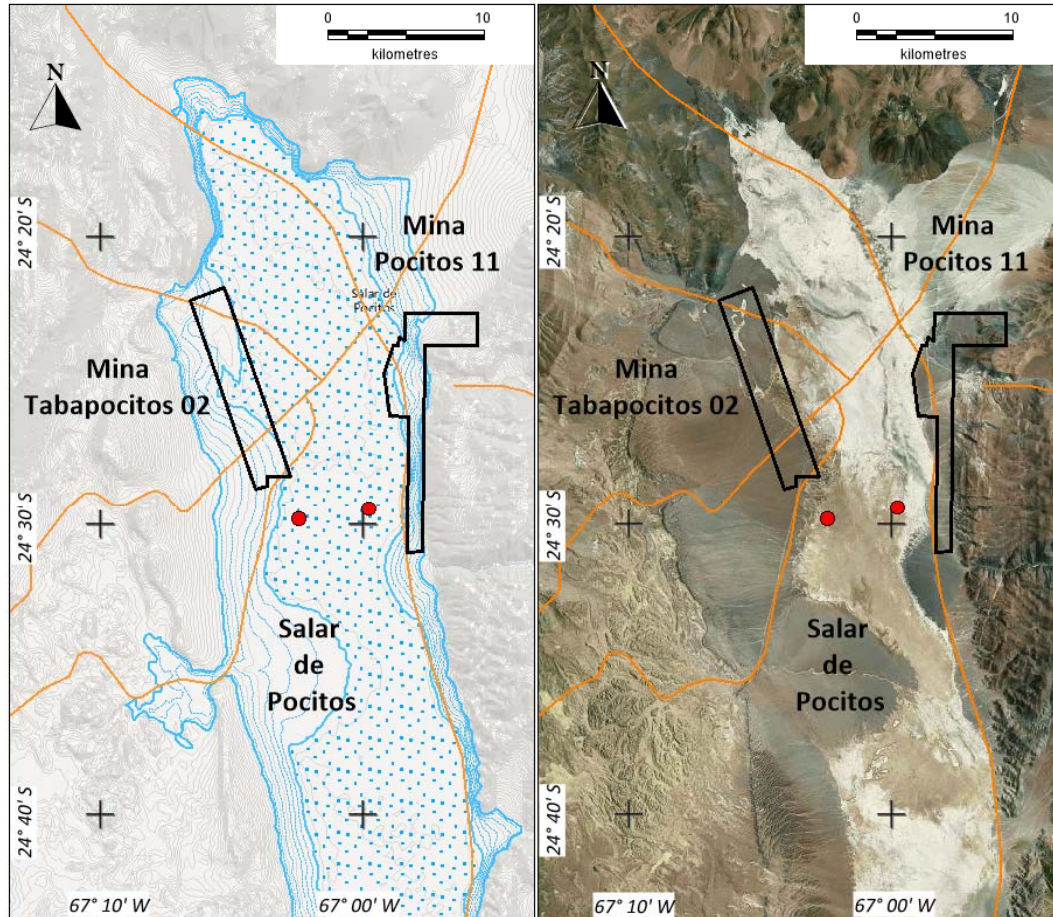


We Explore

**Pepinini**  
Minerals Limited

# Pocitos Project – NEW ground – Strategic holding

Salar de Pocitos Project



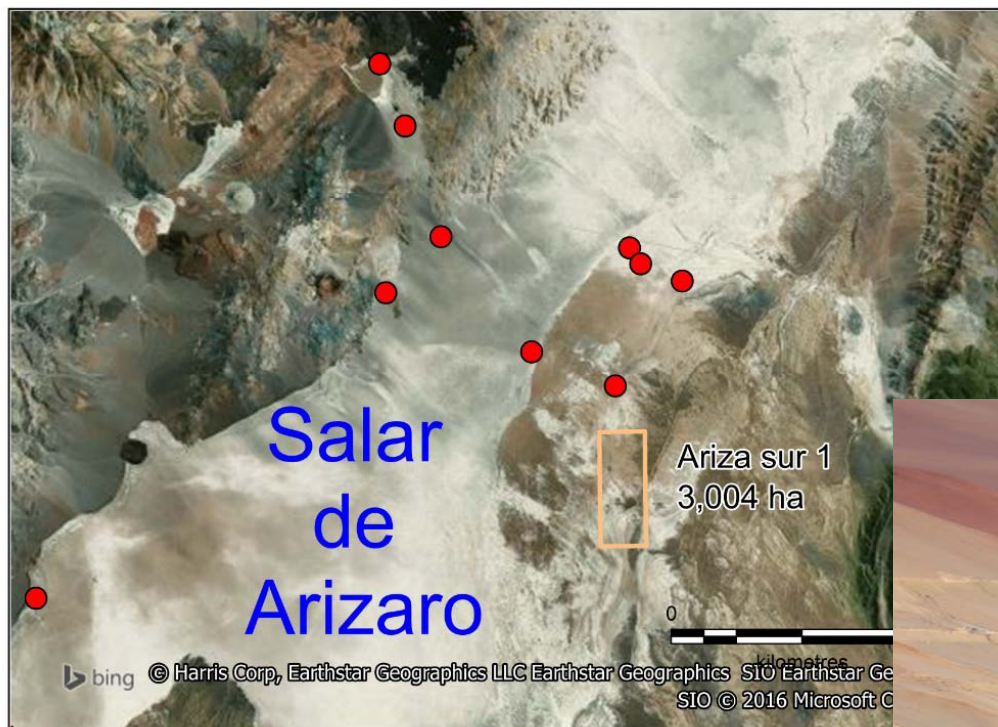
- Two minas(recent addition)
- 6,470ha
- Unique Priority standing for application over ground in between tenure



We Explore

**Pepinini**  
Minerals Limited

# Arizaro Salar – Prospective at depth



□ historic lithium occurrences



We Explore

**Pepinini**  
Minerals Limited

# Argentina - Salta Project – Infrastructure

Pepinini SA

Salta Projects : Regional Infrastructure



Infrastructure available

- ☐ Railway
- ☐ Power
- ☐ Gas



We Explore

**Pepinini**  
Minerals Limited

# Australia meets Argentina on a windy salar



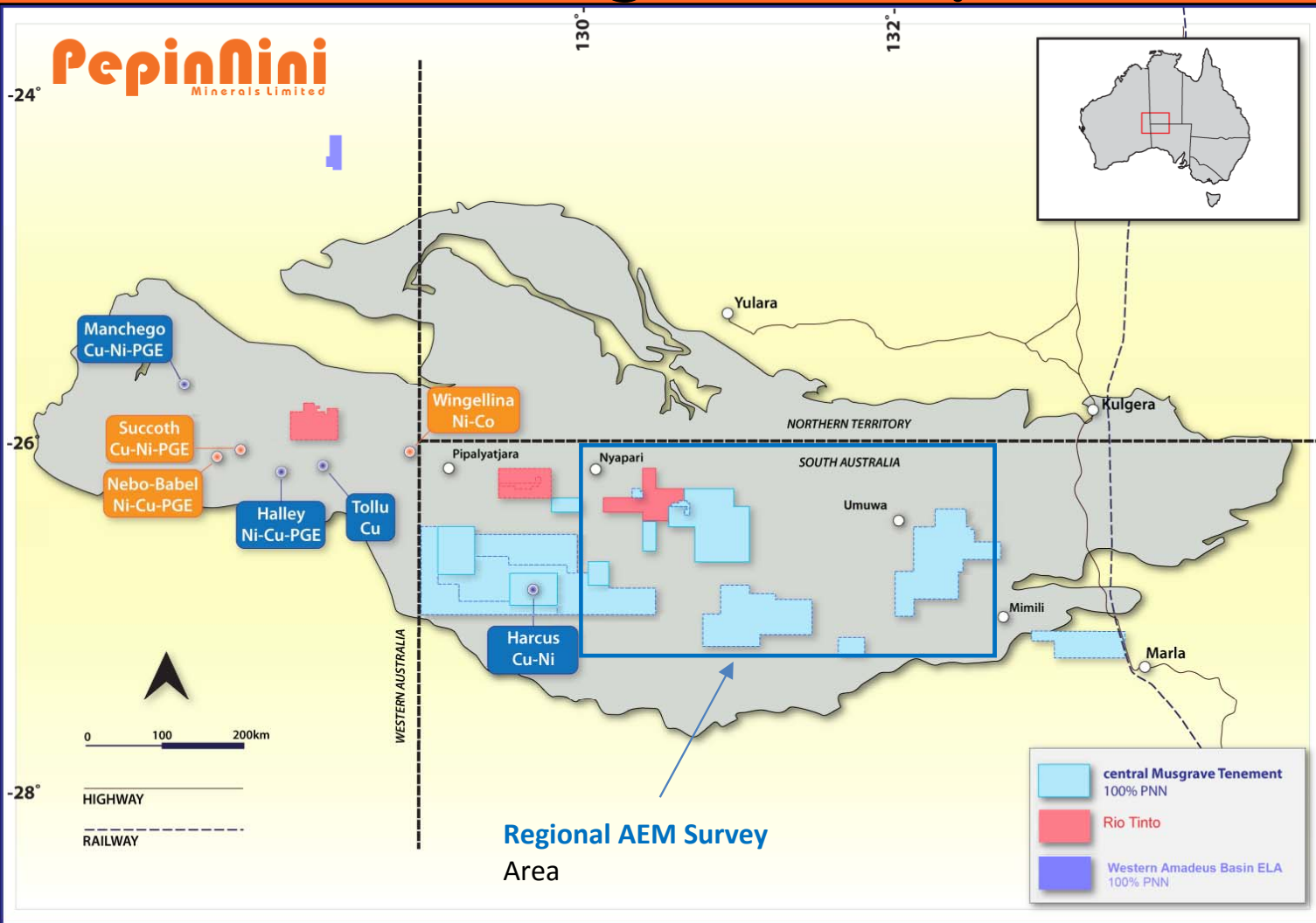
Pepinini



We Explore

**Pepinini**  
Minerals Limited

# Australian - Musgrave Project



- ❑ 15 tenements of 16,130 km<sup>2</sup>
- ❑ Prospective for Copper, Nickel and Platinum Group Elements(PGEs)
- ❑ AEM collaboration with CSIRO, SA DSD and Geoscience Australia underway



**Pepinini**  
Minerals Limited

We Explore

# Leadership Group –



**Rebecca Holland-Kennedy**  
B.Sc., B.Arts,  
MAusIMM, GAICD  
**Chief Executive Officer,**  
**Co-founder**  
Geologist with more than 35 years experience in exploration



**Phil Clifford**  
B.Sc., MAusIMM  
**Executive Technical Director**  
Exploration  
Geologist with more than 25 years and 15 years with Rio Tinto



**Sarah Clifton-Brown**  
B.Arts,(Hons)  
Accountancy,  
FCCA, GAICD  
**Executive Finance Director**  
Fellow of the Association of Chartered Certified Accountants



**Robert (Wei) Sun**  
M.Econ  
(Commerce),  
M.Econ (IEM)  
**Non-Executive Director**  
Resource investment analyst with experience in international trade and the resource industries of China, Canada and Australia



**Justin Nelson**  
B.Arts  
(Jurisprudence)  
LLB  
**Company Secretary**  
Lawyer, Principal with DMAW Lawyers previously ASX State Manager, South Australia



**Nicole Galloway Warland**  
B.Sc.(Hons),  
MAIG  
**Exploration Manager**  
Geologist with more than 25 years exploration experience and Chair SACOME Exploration Committee



We Explore

**Pepini**  
Minerals Limited

# Thank you



## Disclaimer and Competent Persons Statement

- The information in this presentation is published to inform you about PepinNini Minerals Limited and its activities. All reasonable effort has been made to provide accurate information, but we do not warrant or represent its accuracy and we reserve the right to make changes to it at any time without notice.
- To the extent permitted by law, PepinNini Minerals Limited accepts no responsibility or liability for any losses or damages of any kind arising out of the use of any information contained in this presentation. Readers are advised to consult a stockbroker or professional adviser before making any investment decisions.
- The information in this presentation that relates to Exploration Results and Mineral Resources is based on information compiled by Philip Clifford BSc MAusIMM. Mr Clifford is the Technical Director of PepinNini Minerals Limited and has sufficient experience which is relevant to the style of mineralisation and type of deposit under consideration to qualify as a Competent Person as defined in the 2012 edition of the "Australasian Code for Reporting of Exploration Results, Mineral Resources and Ore Reserves". Mr Clifford consents to the inclusion in the report of the matters based on his information in the form and context in which it appears.



We Explore

**PepinNini**  
Minerals Limited

# We Explore

- ✓ **Lithium Brine**
- ✓ **Argentina**
- ✓ **PepinNini – good value**

---

[pepinnini.com.au](http://pepinnini.com.au)