

Rebecca Holland Kennedy  
Managing Director



## Latest Developments

Presentation to **SydneyResourcesRound-up** 12 May 2016

# Innovation to greater diversity

*Three new projects in train through innovative thinking and good geology*

1

**Mozart Project – Amadeus Basin,  
WA - Diamonds, Gold and Base  
Metals – tenure application**



2

**Oasis Gold Project – Queensland  
- existing tenure**



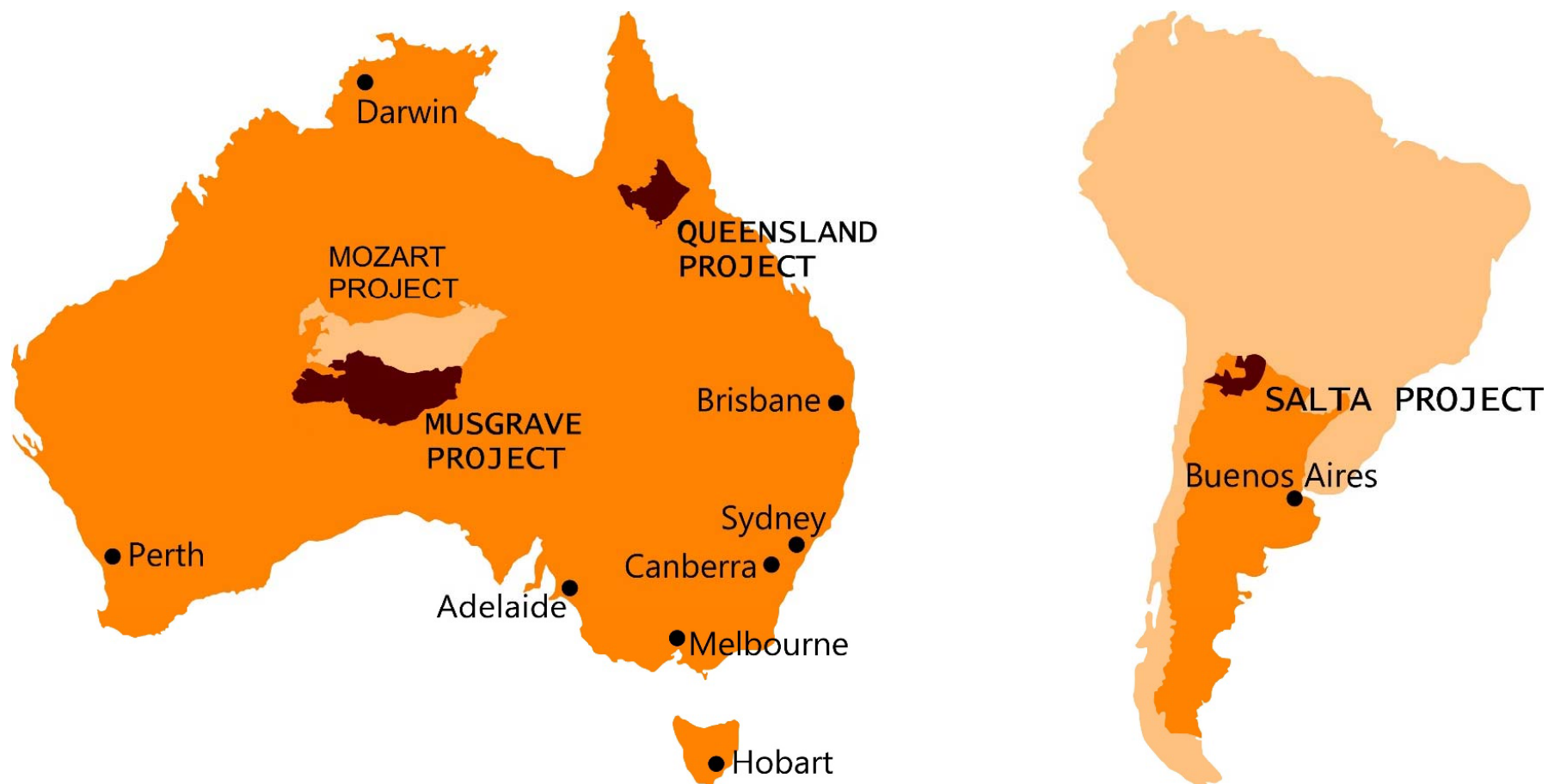
3

**Salta Lithium Brines – Argentina  
- *project generation***



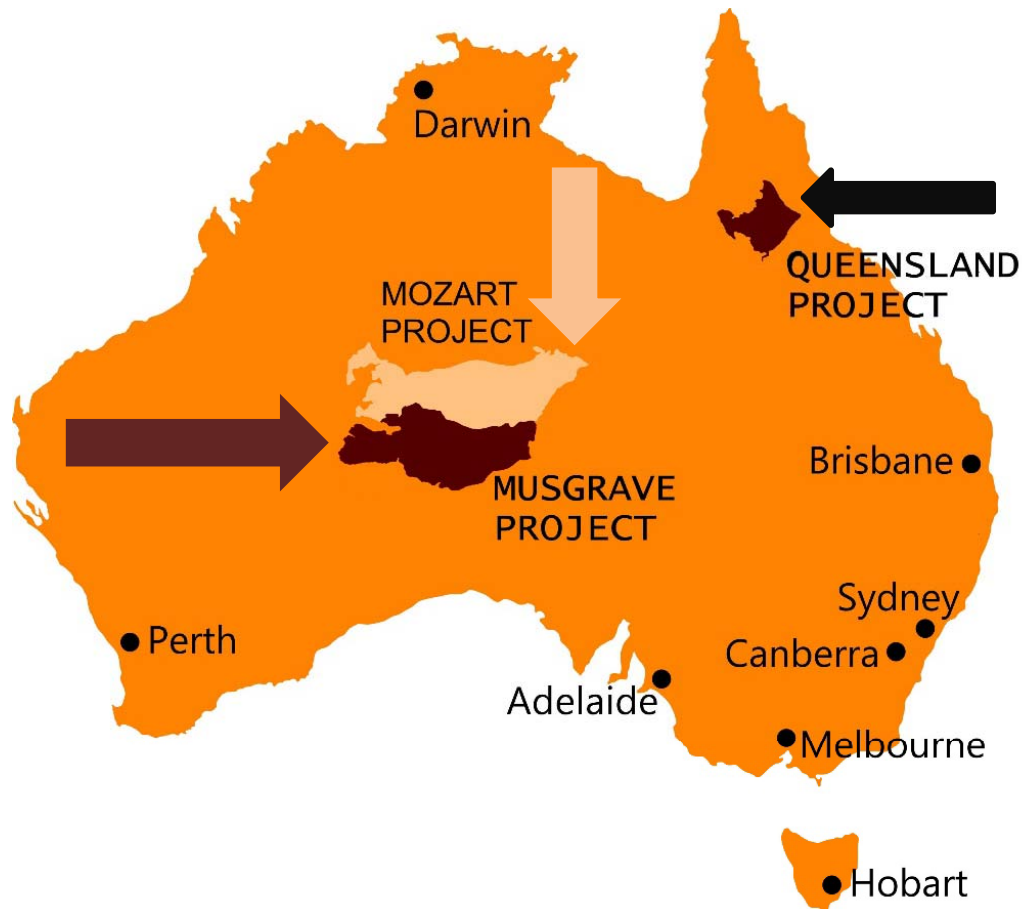
We Explore

# PepinNini – Greenfield Exploration Projects



We Explore

# Australian Exploration Projects



❑ **Musgrave** – Nickel, Copper Cobalt, Platinum and Palladium(established project)

❑ **Mozart** - diamonds, base metals and gold (new project)



❑ **Queensland** – Oasis gold(new project) and uranium (established project)



We Explore



# Argentina Exploration Projects

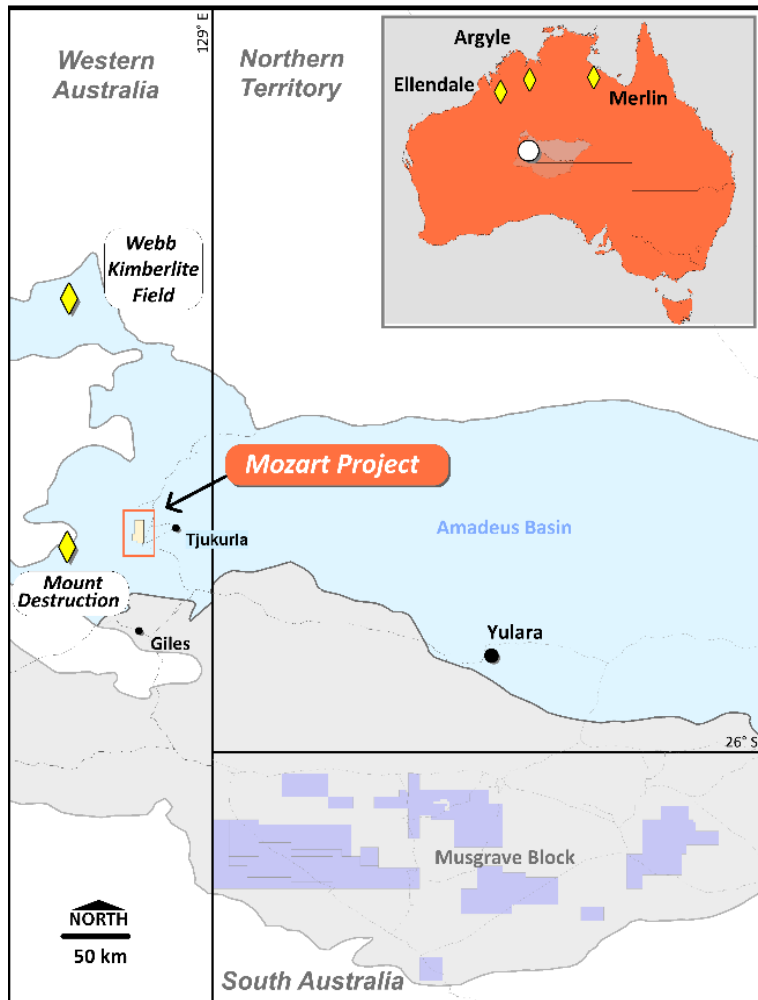


- ❑ **Santa Ines** - Copper, Gold & silver(established project)
- ❑ **Salta Lithium Project** – Lithium brine(being established)



We Explore

# Western Amadeus Basin – Mozart Diamond Project



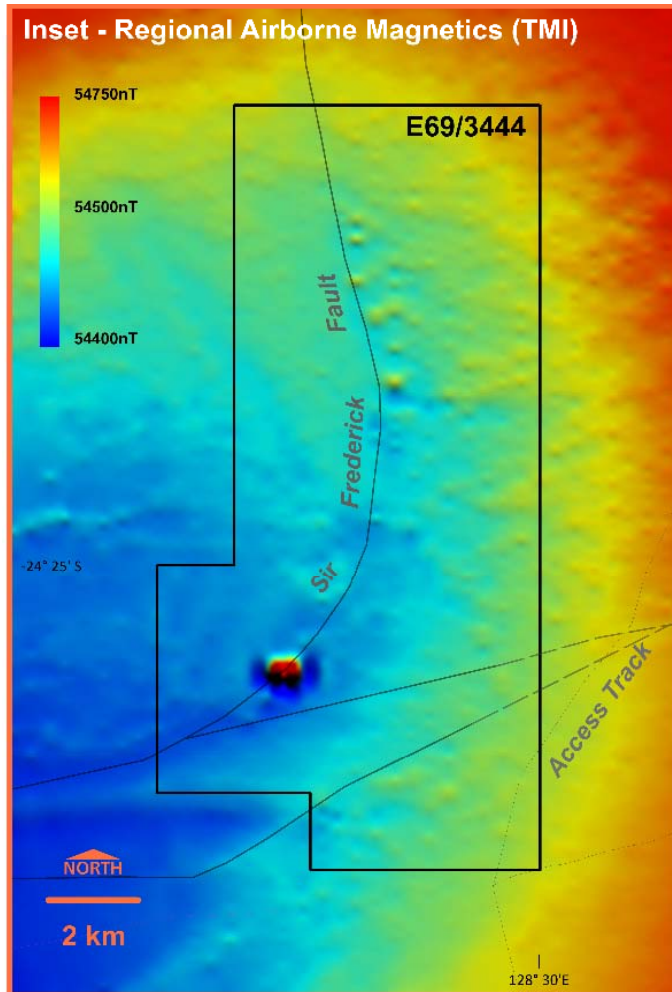
- ❑ Diamonds, base metals and gold potential
- ❑ Unexplored region well located
- ❑ Operational synergy with PNN's Musgrave Project



We Explore

**Pepinini**  
Minerals Limited

# Western Amadeus Basin – Mozart Diamond Project



- ❑ Untested Discrete "bullseye" magnetic anomaly
- ❑ Ground unexplored since 1996 airborne regional geophysical survey
- ❑ Logistically feasible and accessible



We Explore

**Pepinini**  
Minerals Limited

# Argentina - Salta Project – Diverse Commodities



## Santa Ines Project

- Targets are Copper Gold and Silver

## Salta Lithium Project

- Strategic targets are Lithium brines
- High potential for discovery and development
- Infrastructure available



We Explore

**Pepinini**  
Minerals Limited



# Lithium Brine Exploration – Salta, Argentina



We Explore

**Pepinini**  
Minerals Limited

# Lithium Brine Lake – Argentine border to Chile

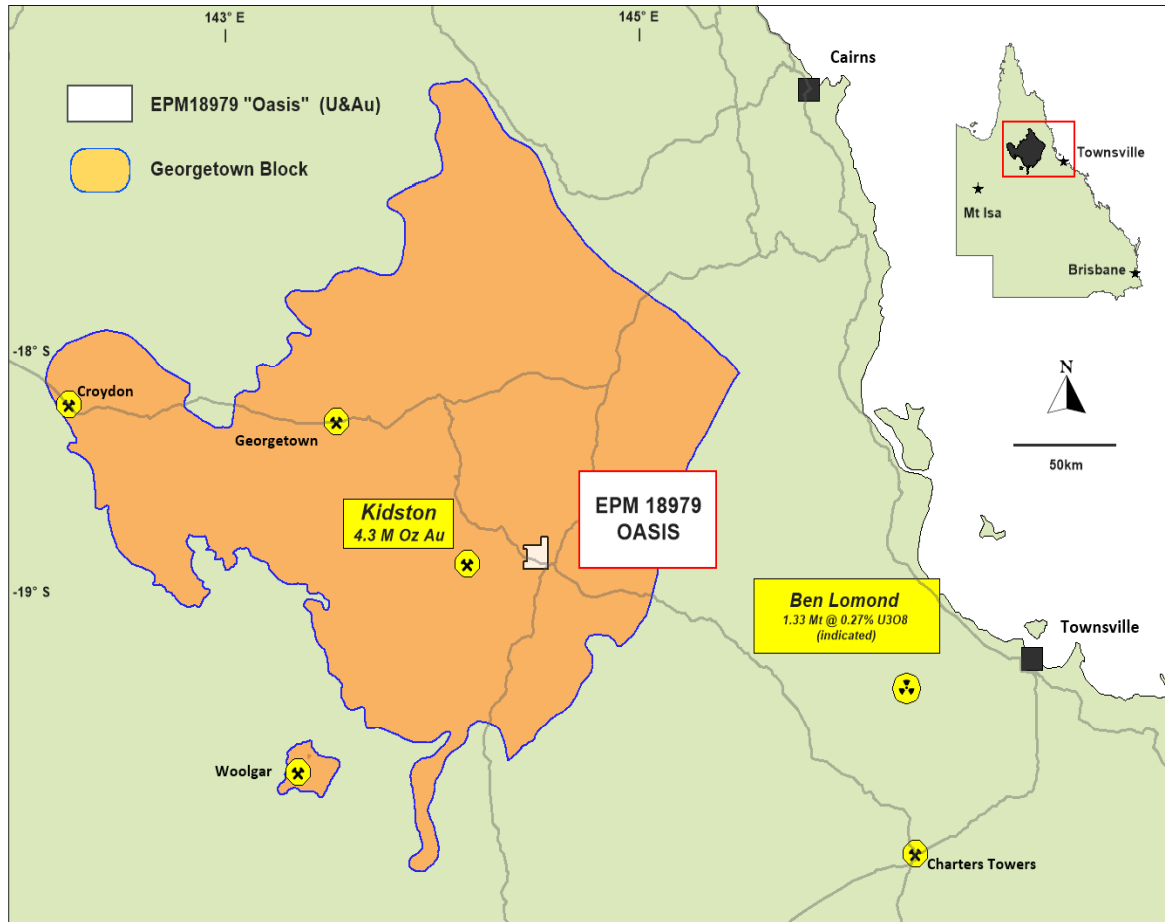


We Explore

**Pepinini**  
Minerals Limited



# Oasis Gold Project –



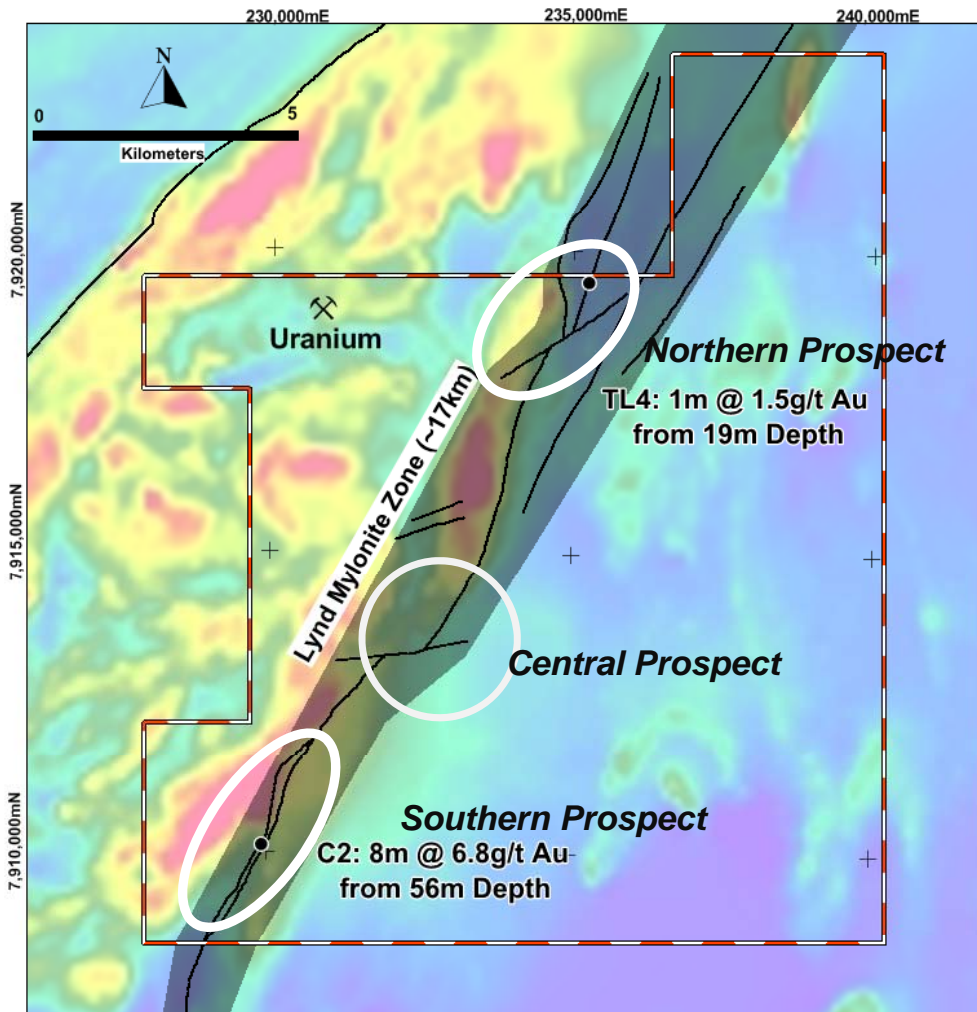
- ☐ Known Uranium mineralisation at Oasis
- ☐ Historic Gold intersections
- ☐ Diligent reinterpretation of geology



We Explore

**Pepinini**  
Minerals Limited

# Oasis Gold Project – potential for discovery



- Gold mineralisation potential along Lynd Mylonite zone

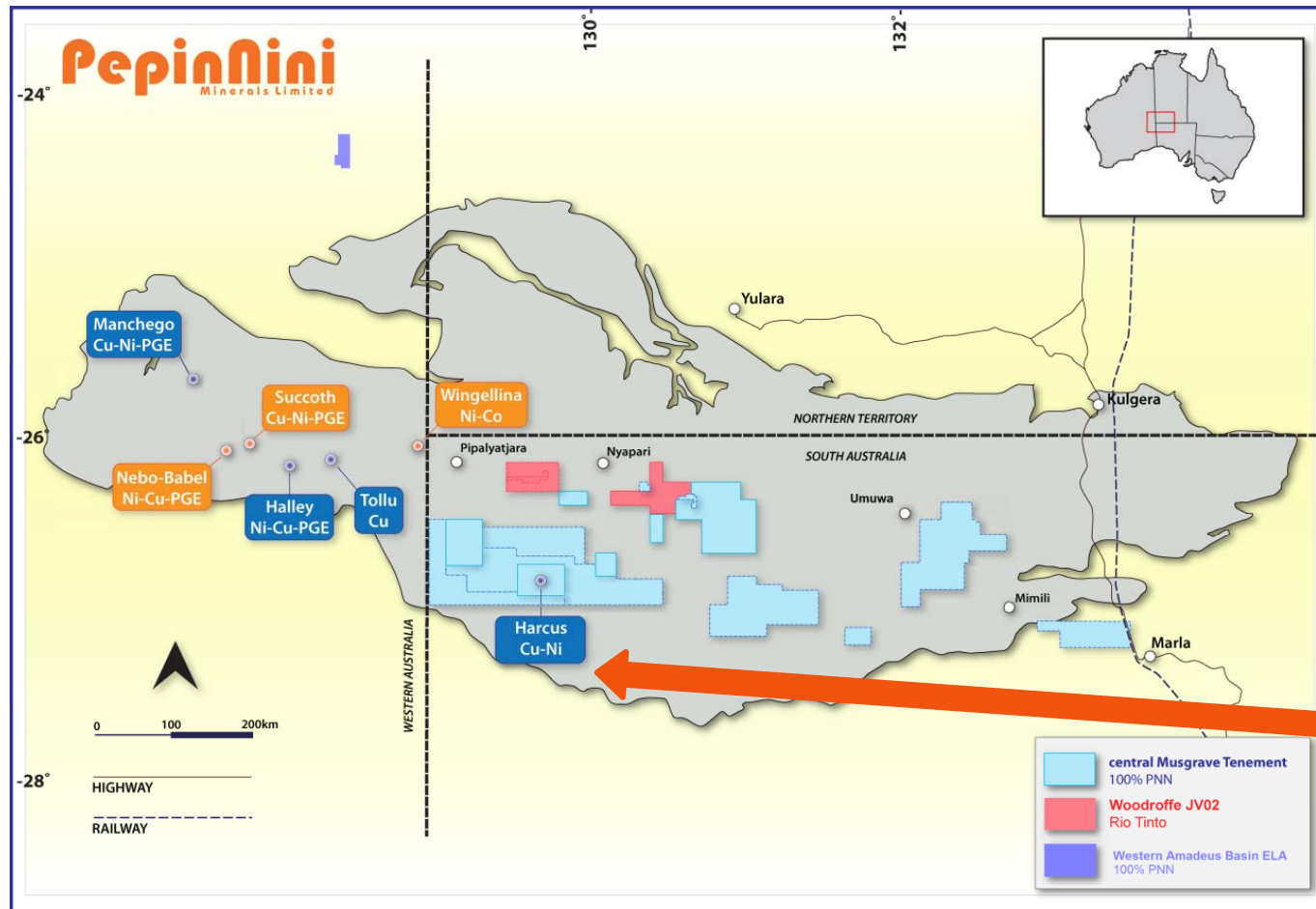


- Potential for epithermal gold deposit
- Field work undertaken and further planned





# Musgrave – project recap and update



- 15 tenements of 15,382 km<sup>2</sup>
- Prospective for Copper, Nickel and Platinum Group Elements(PGEs)
- JV with RioTinto



**Mt Harcus**  
0.3% to 0.7%Cu,  
0.3% Ni



We Explore

**Pepinini**  
Minerals Limited

## Extensive Airborne Electromagnetic Survey planned in collaboration with CSIRO and SA DSD





# Positive engagement with Traditional Owners





# Portable camp and equipment





# Exploration activity planned next 12 months

- ❑ ***Musgrave - Airborne Electromagnetic Survey(AEM) - CSIRO and SA DSD***
- ❑ ***Argentina – tenure and site verification to tenement application***
- ❑ ***Oasis Gold – field work for Northern Prospect and epithermal pathfinders***
- ❑ ***Musgrave - Drilling with company drill rigs for targets generated by AEM***
- ❑ ***Mozart WA – tenement processing to grant and exploration planning***



We Explore

**Pepinini**  
Minerals Limited

# Leadership Group – experience and integrity



**Rebecca Holland-Kennedy**  
B.Sc., B.Arts,  
MAusIMM, GAICD

**Chief Executive Officer,  
Co-founder**  
Geologist with more than 35 years experience in exploration



**Phil Clifford**  
B.Sc., MAusIMM

**Executive Technical Director**  
Exploration  
Geologist with more than 25 years and 15 years with Rio Tinto



**Sarah Clifton-Brown**  
B.Arts,(Hons)  
Accountancy,  
FCCA, GAICD  
**Executive Finance Director**  
Fellow of the Association of Chartered Certified Accountants



**Robert (Wei) Sun**  
M.Econ  
(Commerce),  
M.Econ (IEM)  
**Non-Executive Director**  
Resource investment analyst with experience in international trade and the resource industries of China, Canada and Australia



**Justin Nelson**  
B.Arts  
(Jurisprudence)  
LLB  
**Company Secretary**  
Lawyer, Principal with DMAW Lawyers previously ASX State Manager, South Australia



**Nicole Galloway Warland**  
B.Sc.(Hons),  
MAIG  
**Exploration Manager**  
Geologist with more than 25 years exploration experience and Chair SACOME Exploration Committee



We Explore

**Pepini**  
Minerals Limited

# PepinNini – *a good value investment*

***Exploration is the backbone of the resources industry, be ready for the upswing -***

- ☐ Diverse commodity portfolio
- ☐ Potential Discovery Share Price increase from low base
- ☐ Debt-free
- ☐ Self sufficient exploration capability

**April 2016**

**ASX:PNN**

Shares on issue

270,739,774

Options on  
issue(unquoted)

7,800,000

***New Targets –  
Gold, Lithium  
and Diamonds***



**We Explore**

**PepinNini**  
Minerals Limited



# Thank you



## Disclaimer and Competent Persons Statement

- The information in this presentation is published to inform you about PepinNini Minerals Limited and its activities. All reasonable effort has been made to provide accurate information, but we do not warrant or represent its accuracy and we reserve the right to make changes to it at any time without notice.
- To the extent permitted by law, PepinNini Minerals Limited accepts no responsibility or liability for any losses or damages of any kind arising out of the use of any information contained in this presentation. Readers are advised to consult a stockbroker or professional adviser before making any investment decisions.
- The information in this presentation that relates to Exploration Results and Mineral Resources is based on information compiled by Philip Clifford BSc MAusIMM. Mr Clifford is the Technical Director of PepinNini Minerals Limited and has sufficient experience which is relevant to the style of mineralisation and type of deposit under consideration to qualify as a Competent Person as defined in the 2012 edition of the "Australasian Code for Reporting of Exploration Results, Mineral Resources and Ore Reserves". Mr Clifford consents to the inclusion in the report of the matters based on his information in the form and context in which it appears.



We Explore

**PepinNini**  
Minerals Limited



# We Explore

- ✓ **Gold & Diamonds**
- ✓ **Copper - Nickel**
- ✓ **Lithium**

---

[pepinnini.com.au](http://pepinnini.com.au)