



ASX ANNOUNCEMENT

29th June, 2009

High-Grade Gold up to 1,710 g/t (55 oz/t) In Surface Samples from North Queensland Tenements

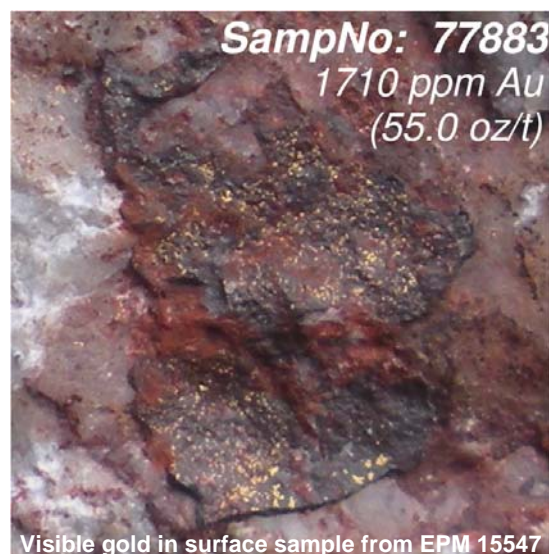
Results from a recently completed follow-up surface sampling program have confirmed high-grade gold mineralisation on the north Queensland tenements of PepinNini Minerals Limited. The Company has four granted tenements within the Etheridge Goldfield where previous sampling had reported gold grades of up to 335 g/t. Some of the more significant results from the recently completed survey conducted in April and May include:

- Gold grades of up to 1,710 g/t (55 oz/t)
- Numerous samples with gold grades of more than 31 g/t (1oz/t)
- Silver grades of up to 20 oz/t
- Soil sampling results confirm extensive surface mineralisation
- New vein systems identified at surface

EPM 15547 – The Return

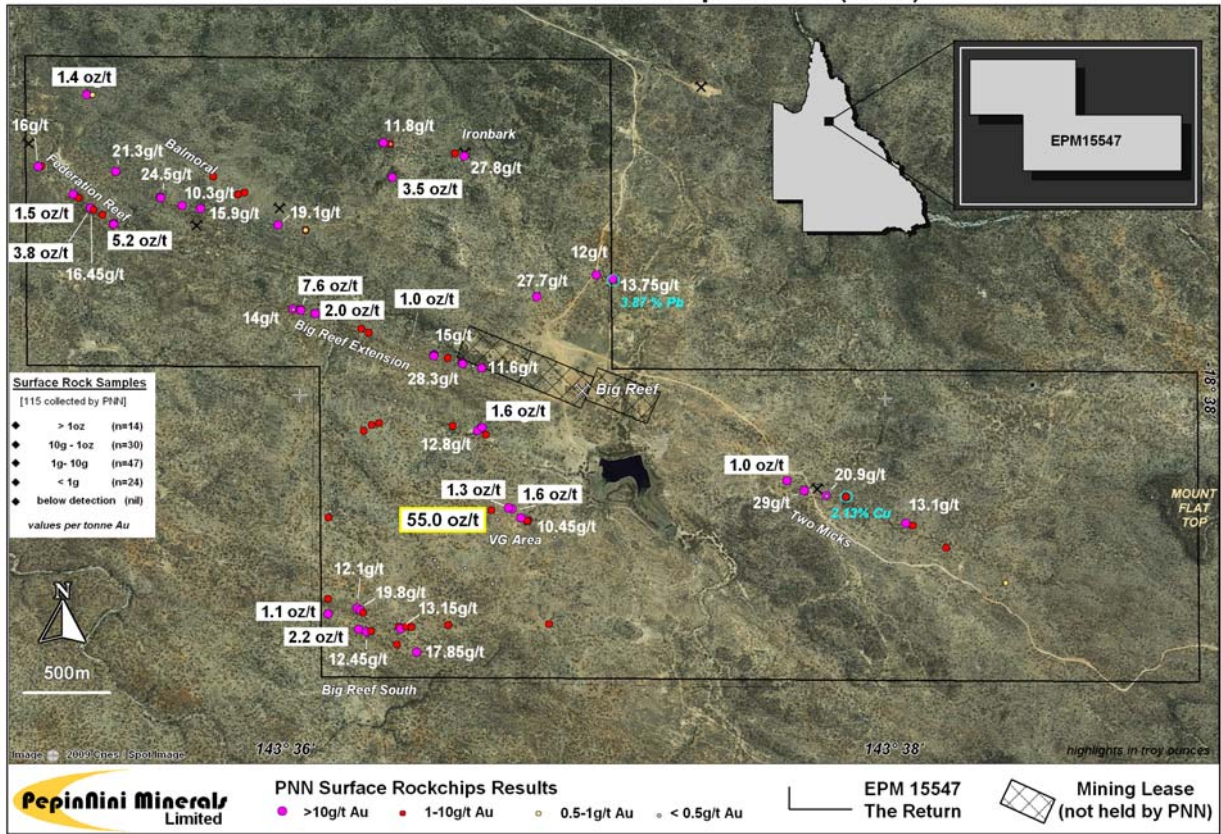
Rock chip sampling by PepinNini in late 2008 reported gold grades of up to 32.7 g/t on EPM 15547. In April 2009, an additional 90 samples were collected to further assess the potential of this tenement and define the extent of the outcropping reefs and prospective zones for drilling.

Several new vein systems have been identified. Rock chip samples have returned gold values ranging from 0.1 g/t (country rock) up to 1710 g/t (55 ounces). Significant silver grades of up to 20 oz/t were also assayed (refer accompanying results table).

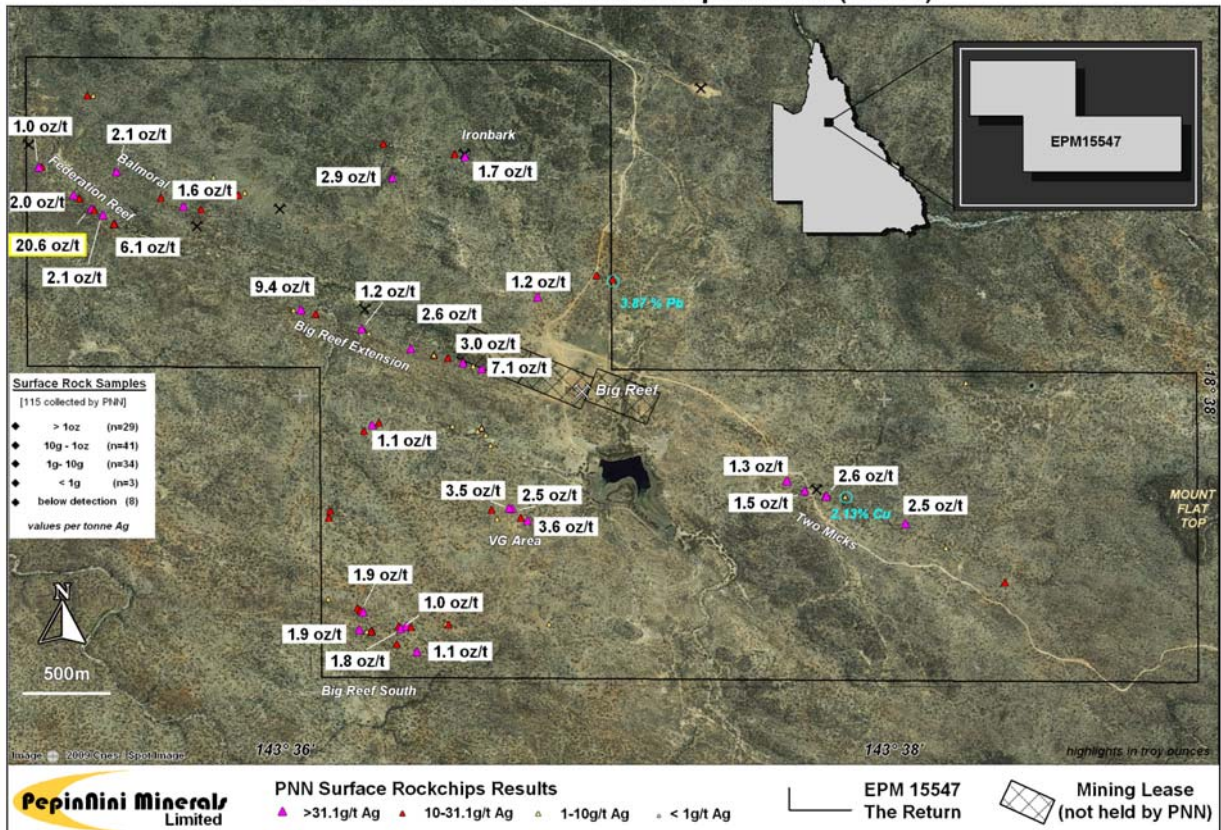


PepinNini is planning a detailed heli-mag survey to assist in defining further structural targets and is planning to undertake a drilling program within the tenement later in 2009.

The Return EPM15547 - Rock Chip Results (Gold)



The Return EPM15547 - Rock Chip Results (Silver)

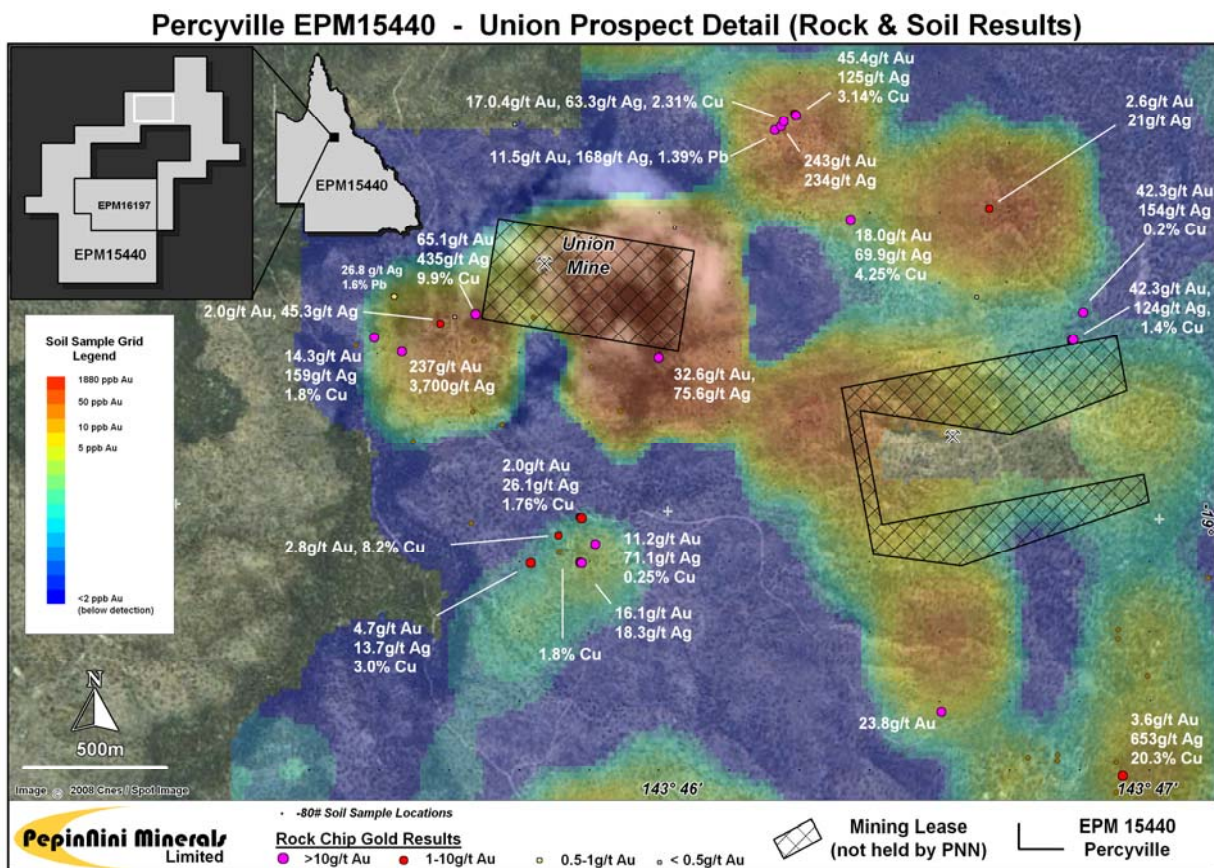


EPM 15440 (Percyville) and 16917 (Lower Percy)

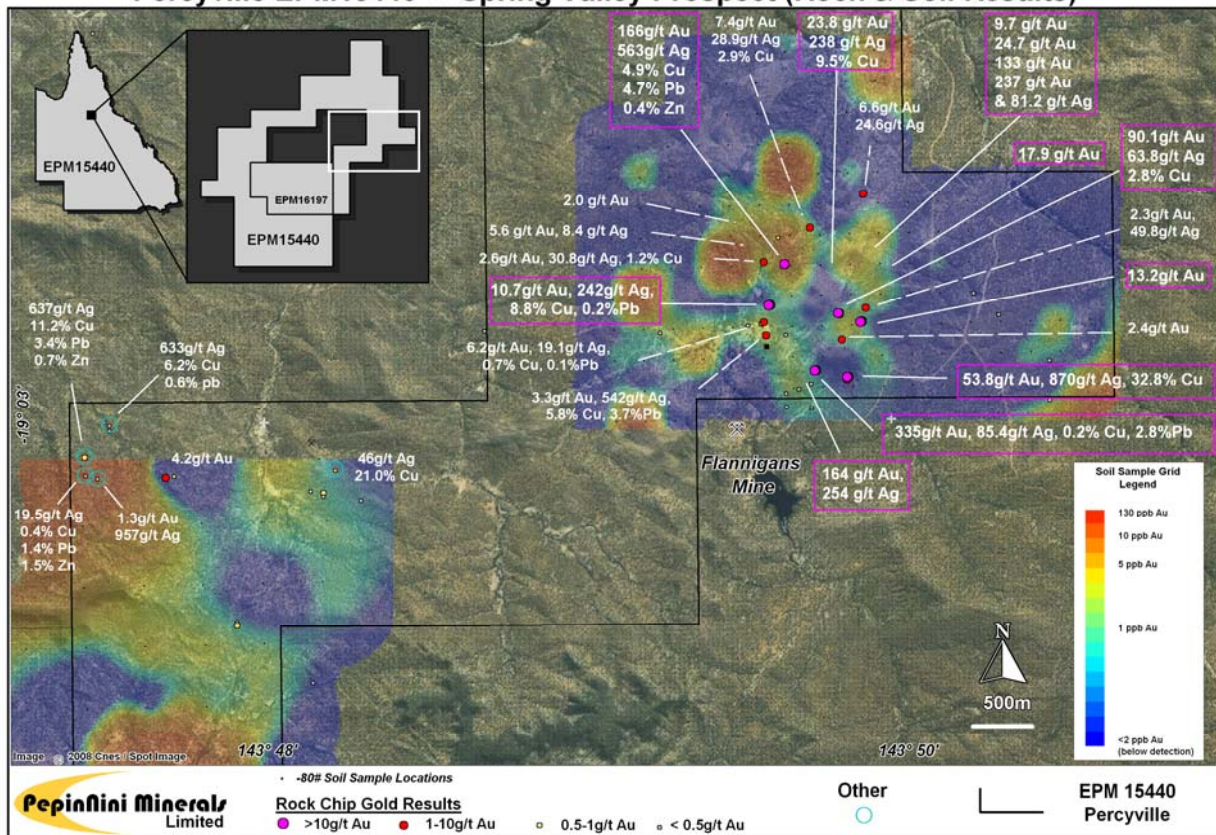
Previous sampling defined four prospects on EPM 15440: Union, Spring Valley, Dividend Gully and Freedom. Initial sampling at the Union Prospect produced gold grades of up to 243 g/t and copper grades of up to 32.8%. Subsequent sampling has defined a major zone of quartz gossan with anomalous gold located to the east of the Union Mining Lease. The gossan crops out for more than 1km in strike length and represents a priority drill target.

A regional soil sampling program has been completed with samples collected on a 250m spaced grid. Results confirm the Union Prospect is highly prospective and a follow-up program is being designed which may initially involve shallow drilling to define zones of blind (non-outcropping) mineralisation.

At Spring Valley, a further 23 rock chip samples were collected and gold grades ranged from 0.19 to 237 g/t. A recently completed soil sampling program also confirmed the gold potential of the area with the results showing good correlation with rock chip sampling as well as defining two further zones of anomalous gold.



Percyville EPM15440 - Spring Valley Prospect (Rock & Soil Results)



EPM 16289 – Sandy Creek

Initial sampling at Sandy Creek identified a zone of polymetallic mineralisation with high grades of gold, lead, zinc and copper. Further sampling has defined a zone of anomalous silver, lead and copper mineralisation located within highly altered sediments along the contact zone with a regional granite. The best recent assays reported were 63 g/t silver, 3.79% lead and 16.7% copper (not same sample).

The information in this report that relates to Exploration Results is based on information compiled by Norman Kennedy BSc MAusIMM. Norman Kennedy is the Chairman and Managing Director of PepinNini Minerals Limited and has sufficient experience which is relevant to the style of mineralisation and type of deposit under consideration to qualify as a Competent Person as defined in the 2004 edition of the "Australasian Code for Reporting of Exploration Results, Mineral Resources and Ore Reserves". Norman Kennedy consents to the inclusion in the report of the matters based on his information in the form and context in which it appears.

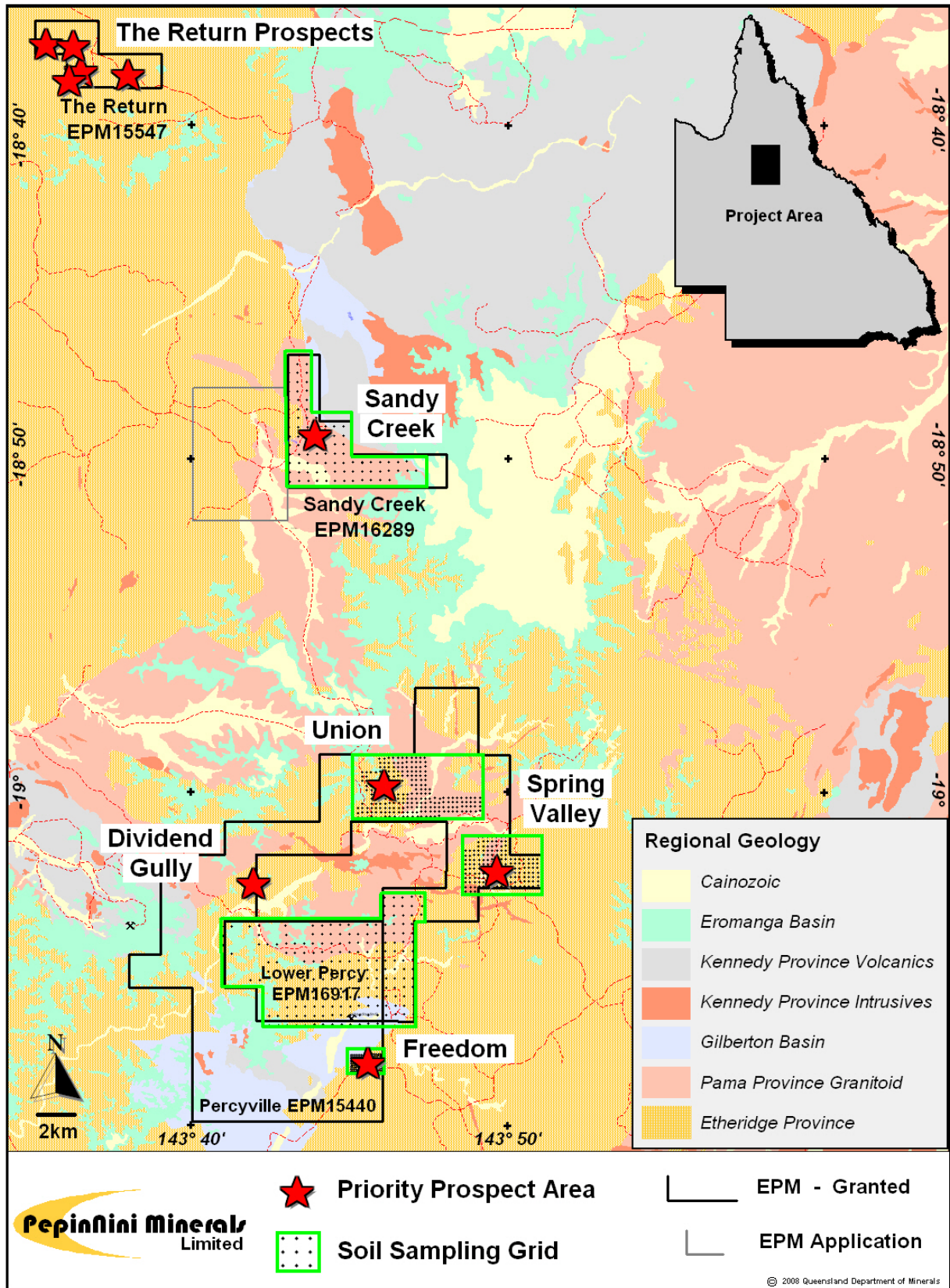
For further information please contact:

Mr Norman Kennedy
Chairman and Managing Director, PepinNini Minerals Limited
Phone: +61 (0)2 9417 6212

Note: Additional information on PepinNini Minerals Limited can be found on the website:

www.pepinini.com.au

North Queensland Project Locations



**EPM15547 “The Return”
Rock Chip Results**

Sample_ID	East	North	Au (g/t)	Au (ozt/t)		Ag (g/t)	Ag (ozt/t)		Cu (%)	Pb (%)	Zn (%)	Date
77883	775635	7937012	1710	55.0	*	26.4						May-09
77875	774335	7938261	235	7.6	*	302	9.7	#				May-09
77861	773222	7938785	163	5.2	*	197	6.3	#		0.13		May-09
77855	773086	7938877	118	3.8	*	642	20.6	#		0.31		May-09
77848	774903	7939045	110	3.5	*	95.6	3.1		0.20	0.79		May-09
77832	774646	7936354	67.9	2.2		61.2	2.0		0.12			May-09
77874	774424	7938236	63	2.0		29.7						May-09
77843	775409	7937551	49.8	1.6		16.5						May-09
77881	775584	7937065	49.4	1.6		80.5	2.6					May-09
77854	772981	7938960	47.8	1.5		66.2	2.1					May-09
77849	773077	7939554	44.7	1.4		14.4				0.43		May-09
77882	775564	7937070	40.2	1.3		114	3.7	#				May-09
77865	773507	7938940	34.5	1.1		27.1			0.17			May-09
187135	774465	7936448	32.7	1.1		30.1						Oct-08
187125	777241	7937219	31.3	1.0		42.3	1.4			0.21		Oct-08
77871	774991	7938026	30.7			84.3	2.7			0.27		May-09
187127	777346	7937159	29			49.9	1.6		0.50			Oct-08
77867	775304	7937937	28.3			96.8	3.1		0.19	0.13		May-09
77847	775341	7939167	27.8			57.4	1.8			0.24		May-09
187113	775760	7938326	27.7			41	1.3			0.73	0.11	Oct-08
77863	773242	7939096	21.3			69.1	2.2					May-09
187128	777475	7937129	20.9			86.3	2.8			0.23		Oct-08
77829	774641	7936483	19.8			20				0.19		May-09
187118	774211	7938767	19.1			12.4				0.36	0.18	Oct-08
77841	774992	7936216	17.85			38.9	1.3			0.13		May-09
77857	773086	7938877	16.45			78.6	2.5					May-09
77852	772775	7939128	16			32	1.0			0.10		May-09
77862	773747	7938868	15.9			15.3				0.27		May-09
77827	775132	7937984	15			12.1						May-09
187122	774290	7938263	14			8						Oct-08
77931	776217	7938427	13.75			26.7			0.40	3.87		May-09
77838	774899	7936355	13.15			57.9	1.9			0.27		May-09
77923	777949	7936958	13.1			80.5	2.6		0.32	0.80		May-09
187121	774290	7938263	12.8			22						Oct-08
77904	775386	7937533	12.8			8.7			0.10			May-09
187136	774465	7936448	12.55			10.4						Oct-08
77833	774694	7936339	12.45			5.9						May-09
187126	777241	7937219	12.4			13.1						Oct-08
77830	774660	7936468	12.1			11.7						May-09
77930	776118	7938452	12			26.8				0.36		May-09
77927	774853	7939251	11.8			12.8				0.65		May-09
77826	775417	7937901	11.6			228	7.3	#				May-09
77878	775675	7936994	10.45			29.3						May-09
77864	773639	7938887	10.3			53.2	1.7			0.29		May-09
77877	773974	7938951	9.15			14.7			0.12			May-09
77851	772794	7939130	9			21.2						May-09
77916	775186	7936377	8.76			30.7						May-09
77858	773103	7938869	8.16			22.9			0.12			May-09
77840	774962	7936366	7.27			14.3						May-09
77879	775675	7936994	7.12			117	3.8	#				May-09
77837	774886	7936370	7.05			11.2						May-09
77870	775214	7937965	6.43			9.9						May-09
77828	774641	7936483	6.15			2.6						May-09
77853	773016	7938939	6.08			15.5						May-09
77907	774793	7937587	5.86			14				0.87		May-09
77929	775283	7939185	5.85			13.7				0.12		May-09
187133	774466	7936538	5.65			18.2						Oct-08

Coordinate Datum – GDA94 (Zone 54)

Analyses by ALS-Chemex (Townsville)

SE54-12 Georgetown (1:250k mapsheet)
7660 Forsayth (1:100k mapsheet)

Gold by Au-AA25 (* rpts Au-DIL)
Silver by ME-ICP61 (# rpts Ag-OG62/62h)
Cu-Pb-Zn by ME-ICP61 (rpts OG62/62h)
(only Cu-Pb-Zn results >0.1% shown)

EPM15547 "The Return" (cont....)
Rock Chip Results

Sample_ID	East	North	Au (g/t)	Au (ozt/t)	Ag (g/t)	Ag (ozt/t)	Cu (%)	Pb (%)	Zn (%)	Date
77921	778190	7936810	5.44		3.2					May-09
77860	773222	7938785	5.4		13.4			0.11		May-09
187115	774375	7938737	4.97		7.5			1.13	0.16	Oct-08
187114	774375	7938737	4.5		1.7				0.27	Oct-08
77911	774477	7937023	4.2		17.3					May-09
77905	775235	7937564	4.13		1.4					May-09
77885	775459	7937061	4.12		16.8					May-09
77856	773086	7938877	4.09		17					May-09
187134	774466	7936538	3.82		9.5					Oct-08
77831	774674	7936455	3.77		61.5	2.0				May-09
77859	773156	7938839	3.45		68.6	2.2				May-09
77924	777591	7937120	3.37		3.9					May-09
77839	774932	7936371	2.93		32	1.0		0.30		May-09
77876	774335	7938261	2.93		1.2					May-09
77836	774874	7936264	2.86		29.6			0.12		May-09
77926	774897	7939245	2.79		6.1			0.23	0.12	May-09
77925	774897	7939245	2.74		4.8			0.24	0.14	May-09
77868	775304	7937937	2.22		33.2	1.1	0.44			May-09
187119	774012	7938965	2.07		4.7					Oct-08
77842	775433	7937509	2.01		3.2					May-09
77873	774743	7938120	1.96		4.8					May-09
77834	774721	7936344	1.88		34.6	1.1				May-09
77884	775459	7937061	1.85		8.5					May-09
77844	775409	7937551	1.78		1.8					May-09
77866	773507	7938940	1.65		20.6			0.28		May-09
187124	773827	7939059	1.59		1.7					Oct-08
77909	774700	7937539	1.5		15.9		0.11	0.11		May-09
77869	775214	7937965	1.45		4.8					May-09
77922	777990	7936946	1.37		0.8					May-09
77917	775792	7936376	1.36		1.4					May-09
77872	775132	7937986	1.16		8.5		0.11	0.20		May-09
187132	774698	7938146	1.07		40.2	1.3				Oct-08
77908	774749	7937574	1.07		38.1	1.2		0.36		May-09
77835	774721	7936344	1.02		14.9					May-09
77888	778543	7936599	0.99		11.3					May-09
77850	773112	7939554	0.99		1.7			0.11	0.17	May-09
187120	774290	7938263	0.69		<0.5					Oct-08
187116	774375	7938737	0.68		<0.5					Oct-08
187123	774290	7938263	0.47		1.8		0.11			Oct-08
77845	775463	7937445	0.45		5.3					May-09
77825	775366	7937919	0.35		6.1					May-09
187131	774713	7938137	0.33		16.9					Oct-08
187129	777475	7937129	0.33		7.1		2.13			Oct-08
77910	774488	7937063	0.28		21.1			0.16		May-09
77906	774893	7937714	0.27		0.7					May-09
187130	774713	7938137	0.25		5					Oct-08
77880	775492	7937007	0.22		1					May-09
77928	774897	7939245	0.19		<0.5					May-09
77846	775463	7937445	0.17		1.8					May-09
77915	775172	7936384	0.08		7.3					May-09
187117	774211	7938767	0.05		3.1				0.17	Oct-08
77889	778331	7937792	0.05		1.2					May-09
77913	775293	7936714	0.04		0.5					May-09
77912	775456	7936621	0.03		<0.5					May-09
77920	776683	7936743	0.03		<0.5					May-09
77919	775834	7936897	0.02		<0.5					May-09
77914	775132	7936724	0.01		<0.5					May-09
77918	775112	7936763	0.01		<0.5					May-09

Coordinate Datum – GDA94 (Zone 54)

Analyses by ALS-Chemex (Townsville)

SE54-12 Georgetown (1:250k mapsheet)
7660 Forsayth (1:100k mapsheet)

Gold by Au-AA25 (* rpts Au-DIL)
Silver by ME-ICP61 (# rpts Ag-OG62/62h)
Cu-Pb-Zn by ME-ICP61 (rpts OG62/62h)
(only Cu-Pb-Zn results >0.1% shown)

**EPM15440 "Percyville" – Union Prospect
Rock Chip Results**

Sample_ID	East	North	Au (g/t)	Au (ozt/t)		Ag (g/t)	Ag (ozt/t)		Cu (%)	Pb (%)	Zn (%)	Date
258270	791685	7898259	243	7.8	*	234	7.5	#	0.25	0.32	0.11	Nov-08
258240	790331	7897454	237	7.6	*	3700	119.0	#	0.10	0.46		Nov-08
900129	790589	7897579	65	2.1	**	435	14.0	##	10.0	0.46		Nov-06
258274	791739	7898297	45.4	1.5		125	4.0	#	3.14	0.23		Nov-08
187068	792765	7897594	42.3	1.4		154	5.0	#	0.29			Oct-08
187066	792724	7897493	42.3	1.4		124	4.0	#	0.15			Oct-08
187054	791249	7897431	32.6	1.0		75.6	2.4					Oct-08
187058	792258	7896162	23.8			11.3						Oct-08
258406	792129	7897932	20			236	7.6	#	6.03	0.13		Apr-09
258268	791934	7897925	18.05			69.9	2.2	#	4.25			Nov-08
900132	791111	7897238	18		**	39.9	1.3					Nov-06
258271	791695	7898276	17.05			63.3	2.0	#	2.31			Nov-08
187056	790968	7896697	16.1			18.3			0.12	0.12		Oct-08
258242	790233	7897504	14.35			159	5.1	#	1.81			Nov-08
258241	790331	7897454	14.15			32.6	1.0					Nov-08
258437	791883	7898432	12.25			249	8.0	#	0.24			Apr-09
258269	791663	7898245	11.55			168	5.4	#	0.44	1.39		Nov-08
258245	791022	7896762	11.2			71.1	2.3	#	0.26			Nov-08
258273	791739	7898297	10.25			75	2.4	#	2.70	0.58		Nov-08
900131	791008	7897395	10		**	6.93						Nov-06
258407	792054	7897934	5.65			15.7			0.61			Apr-09
258272	791732	7898306	5.43			32.3	1.0		0.30			Nov-08
900080	790786	7896701	5		**	13.7			3.0			Nov-06
900060	792882	7895981	4		**	653	21.0	##	20.0			Nov-06
187057	790968	7896697	3.88			10			0.12			Oct-08
258409	792142	7898019	3.37			28.1			0.29			Apr-09
187067	792724	7897493	3.11			36.9	1.2		1.42			Oct-08
258405	792129	7897932	3.07			48.1	1.5		0.66			Apr-09
258408	792054	7897934	2.89			101	3.2	#	37.1			Apr-09
187055	790890	7896795	2.86			161	5.2	#	8.2			Oct-08
187081	792429	7897966	2.61			2.3						Oct-08
258421	792238	7898039	2.37			51.4	1.7					Apr-09
187052	790469	7897555	2.08			45.3	1.5		0.21	0.27		Oct-08
258243	790965	7896861	2			26.1			1.77			Nov-08
900130	790800	7897576	2		**	21.4						Nov-06
187079	792429	7897966	1.98			21.1						Oct-08
258428	791972	7898426	1.48			56.5	1.8					Apr-09
258474	790341	7898849	1.38			7						Apr-09
187078	792429	7897966	1.34			1.2						Oct-08
258424	792312	7898050	1.29			48.8	1.6					Apr-09
258411	792368	7898019	1.26			10.8		#	1.33			Apr-09
187069	792429	7897966	1.15			5.3						Oct-08
258422	792273	7898045	1.13			42.5	1.4					Apr-09
258414	792372	7897843	1.12			8.7			0.31			Apr-09
258432	791920	7898557	1.08			14.3						Apr-09
187075	792429	7897966	0.95			17.7						Oct-08
258397	792394	7897695	0.95			7.4						Apr-09
258417	792179	7898040	0.77			2.9						Apr-09
258400	792390	7897641	0.69			11.2						Apr-09
187080	792429	7897966	0.55			2.1						Oct-08
258475	790305	7897652	0.52			26.8			0.16	1.63		Apr-09
258399	792380	7897663	0.51			18.8						Apr-09
187073	792429	7897966	0.5			3.9						Oct-08
258410	792379	7898016	0.49			4.4						Apr-09
187077	792429	7897966	0.46			16.5						Oct-08
900136	790588	7897490	0.447			7.81			0.12			Nov-06
258430	791955	7898505	0.44			20.9						Apr-09
258392	792386	7897926	0.43			0.8						Apr-09
258426	791978	7898393	0.38			12.4						Apr-09

Coordinate Datum – GDA94 (Zone 54)

Analyses by ALS-Chemex (Townsville)

SE54-12 Georgetown &
SE54-16 Gilberton (1:250k map sheets)
7660 Forsayth &
7659 Gilberton (1:100k map sheets)

Gold by Au-AA25 (* rpts Au-DIL)
Silver by ME-ICP61 (# rpts Ag-OG62/62h)
Cu-Pb-Zn by ME-ICP61 (rpts OG62/62h)
(only Cu-Pb-Zn results >0.1% shown)
[NB. 2006 Samples Analysed by ME-MS61]

**EPM15440 "Percyville" – Union Prospect
Rock Chip Results (cont....)**

Sample_ID	East	North	Au (g/t)	Au (ozt/t)	Ag (g/t)	Ag (ozt/t)	Cu (%)	Pb (%)	Zn (%)	Date
258427	791978	7898393	0.36		20.8					Apr-09
258436	791902	7898766	0.35		8.1					Apr-09
187076	792429	7897966	0.34		8.7					Oct-08
258423	792300	7898043	0.33		30.6					Apr-09
258431	791955	7898505	0.32		26.6					Apr-09
187065	792727	7895798	0.31		1.6					Oct-08
187070	792429	7897966	0.29		7.5					Oct-08
900081	790892	7896732	0.273		1.66		2.0			Nov-06
900137	790578	7896837	0.264		0.44					Nov-06
900059	792880	7895870	0.249		0.85					Nov-06
258416	792367	7897916	0.24		0.6					Apr-09
187074	792429	7897966	0.22		11.2					Oct-08
258244	790965	7896861	0.21		2.4		0.33			Nov-08
258393	792386	7897729	0.19		16.1					Apr-09
258415	792351	7897898	0.18		3.7					Apr-09
258429	791972	7898426	0.17		6.6					Apr-09
258419	792097	7898087	0.16		13					Apr-09
258404	792129	7897932	0.16		5.6					Apr-09
900087	790923	7898692	0.148		0.23					Nov-06
258413	792361	7897869	0.14		8.6					Apr-09
258420	792201	7898030	0.14		6.8					Apr-09
258412	792361	7897869	0.14		0.8					Apr-09
258239	790736	7898265	0.14		<0.5					Nov-08
258398	792380	7897663	0.12		7.3					Apr-09
900088	793345	7898577	0.114		0.2					Nov-06
258425	791977	7898373	0.11		2.1					Apr-09
187053	790521	7897579	0.1		0.9					Oct-08
258435	791853	7898624	0.1		0.5					Apr-09
900082	790688	7897190	0.099		0.66					Nov-06
900066	792453	7895478	0.098		16.1		0.49			Nov-06
900133	794137	7895363	0.092		0.2					Nov-06
258395	792357	7897705	0.09		5.4					Apr-09
258473	791305	7897897	0.09		3.7					Apr-09
258433	791884	7898578	0.08		1.1					Apr-09
258434	791871	7898590	0.08		0.8					Apr-09
258402	792390	7897724	0.07		8.1					Apr-09
258418	792167	7898047	0.07		2.2					Apr-09
900084	790371	7897128	0.064		0.31					Nov-06
258394	792357	7897705	0.06		1.3					Apr-09
258403	792390	7897724	0.05		3.1					Apr-09
258396	792395	7897715	0.04		2.4					Apr-09
258267	792386	7897649	0.04		1.6					Nov-08
900062	792890	7896457	0.04		0.42					Nov-06
900091	792890	7896457	0.028		1.01					Nov-06
900086	790819	7898783	0.023		0.28					Nov-06
900063	792672	7896006	0.022		0.13					Nov-06
900085	790166	7897475	0.012		0.78					Nov-06
900064	792560	7895609	0.009		0.13					Nov-06
900068	792671	7895984	0.008		0.32					Nov-06
900067	792566	7895997	0.008		0.04					Nov-06
900083	790584	7897236	0.002		0.26					Nov-06
900065	792560	7895598	0.002		0.14					Nov-06
900061	792992	7896289	<0.001		1.16					Nov-06
900092	793209	7896640	<0.001		0.26					Nov-06
900093	792889	7896424	<0.001		0.07					Nov-06
258391	792332	7897937	<0.01		<0.5					Apr-09

Coordinate Datum – GDA94 (Zone 54)

Analyses by ALS-Chemex (Townsville)

SE54-12 Georgetown &
SE54-16 Gilberton (1:250k map sheets)
7660 Forsayth &
7659 Gilberton (1:100k map sheets)

Gold by Au-AA25 (* rpts Au-DIL)
Silver by ME-ICP61 (# rpts Ag-OG62/62h)
Cu-Pb-Zn by ME-ICP61 (rpts OG62/62h)
(only Cu-Pb-Zn results >0.1% shown)
[NB. 2006 Samples Analysed by ME-MS61]

**EPM15440 "Percyville" – Spring Valley Prospect
Rock Chip Results**

Sample_ID	East	North	Au (g/t)	Au (ozt/t)		Ag (g/t)	Ag (ozt/t)		Cu (%)	Pb (%)	Zn (%)	Date
187033	797591	7891640	335	10.8	*	85.4	2.7		0.27	2.81		Oct-08
258492	798064	7892623	237	7.6	*	23.6						Apr-09
187044	797349	7892515	166	5.3	*	255	8.2	#	3.50	0.98		Oct-08
77805	797487	7891616	164	5.3	*	254	8.2	#				Apr-09
258493	798064	7892623	133	4.3	*	24.8						Apr-09
187028	797799	7892098	90.1	2.9		63.8	2.1		0.82			Oct-08
187022	797862	7891580	53.8	1.7		417	13.4	#	0.19			Oct-08
187043	797349	7892515	45	1.4		92.5	3.0		0.86	2.03		Oct-08
258489	798038	7892569	24.7			81.2	2.6		5.19	0.13		Apr-09
187042	797349	7892515	23.9			563	18.1	#	4.94	4.79	0.41	Oct-08
258498	797782	7892421	23.8			238	7.7	#	9.56			Apr-09
258497	797782	7892421	20.6			9.3			0.29	0.21		Apr-09
258485	798173	7892430	17.9			4.1						Apr-09
187027	797799	7892098	14.45			13.5						Oct-08
187031	797988	7892030	13.25			3.5						Oct-08
77804	797800	7892096	11.7			76.6	2.5		0.88			Apr-09
187039	797223	7892180	10.75			242	7.8	#	0.16			Oct-08
258491	798058	7892610	9.78			4.3						Apr-09
258486	798173	7892430	8.96			1.7						Apr-09
258495	797839	7892331	8.38			1.2						Apr-09
187047	797570	7892812	7.4			16.9			2.99	0.31		Oct-08
187029	797799	7892098	6.84			57.2	1.8		2.88			Oct-08
187051	798025	7893079	6.67			23.2						Oct-08
187038	797162	7892044	6.24			19.1			0.71	0.13		Oct-08
900105	797139	7892024	6		*	41.9	1.3		6.00	0.87		Nov-06
258487	798171	7892420	6			1.2						Apr-09
187024	797862	7891580	5.9			817	26.3	#	19.70			Oct-08
77807	797090	7892658	5.62			8.4						Apr-09
187041	797223	7892180	5.48			31.9	1.0		8.82	0.22		Oct-08
187040	797223	7892180	5.18			46.6	1.5		0.50	0.17		Oct-08
187025	797851	7891564	5			77	2.5		0.83			Oct-08
187048	797570	7892812	4.07			22.1			1.37	0.12		Oct-08
187050	798025	7893079	4.06			24.6			0.11			Oct-08
900099	797339	7891345	4		*	5.65						Nov-06
187049	797570	7892812	3.85			28.9			1.84	0.24		Oct-08
187037	797179	7891934	3.38			542	17.4	#	5.63	3.71		Oct-08
258488	798038	7892569	3.01			62	2.0		2.58			Apr-09
258496	797782	7892421	2.83			10.2						Apr-09
77802	797765	7892049	2.69			4.4			0.10			Apr-09
187046	797177	7892537	2.67			30.8			1.24			Oct-08
77801	797975	7892030	2.63			22.7			0.72			Apr-09
187023	797862	7891580	2.55			870	28.0	#	32.80			Oct-08
187032	797988	7892030	2.51			3.2						Oct-08
187026	797814	7891885	2.44			10.1						Oct-08
187034	797591	7891640	2.33			5.3						Oct-08
187030	798023	7892142	2.31			49.8	1.6					Oct-08
77806	797005	7892847	2.09			2.3						Apr-09
258494	798111	7892711	1.74			0.8						Apr-09
187036	797179	7891934	1.45			127	4.1	#	0.32	1.02		Oct-08
258499	798020	7892143	1.32			2.7						Apr-09
258490	798050	7892591	1.25			3.7						Apr-09
258500	798003	7892081	0.98			2.5						Apr-09
187045	797307	7892733	0.61			7.4						Oct-08
187035	797179	7891934	0.44			45.7	1.5		5.80			Oct-08
900098	797340	7891456	0.278			0.21						Nov-06
77803	797800	7892096	0.19			1.4			0.39			Apr-09
900100	797446	7891488	0.182			0.66						Nov-06
900101	797552	7891530	0.028			0.21						Nov-06
900103	797348	7891932	0.02			0.09						Nov-06
900159	796295	7891972	0.018			0.11						Nov-06
900102	797549	7891331	0.011			0.1						Nov-06
900094	798933	7892239	0.003			0.06						Nov-06
900095	799141	7892059	0.002			0.06						Nov-06
900104	797033	7892015	0.002			0.06						Nov-06
900096	799556	7891675	<0.001			0.08						Nov-06

Coordinate Datum – GDA94 (Zone 54)

Analyses by ALS-Chemex (Townsville)

SE54-16 Gilberton (1:250k mapsheet)
7659 Gilberton (1:100k mapsheet)

Gold by Au-AA25 (* rpts Au-DIL)
Silver by ME-ICP61 (# rpts Ag-OG62/62h)
Cu-Pb-Zn by ME-ICP61 (rpts OG62/62h)
(only Cu-Pb-Zn results >0.1% shown)

**EPM16289 "Sandy Creek"
Rock Chip Results**

Sample_ID	East	North	Au (g/t)	Au (ozt/t)	Ag (g/t)	Ag (ozt/t)	Cu (%)	Pb (%)	Zn (%)	Date
187101	787583	7917401	141	4.5 *	66.8	2.1	3.70	12.15	6.62	Oct-08
187106	787796	7917700	5.42		12.6		0.26	0.87	0.47	Oct-08
187105	787502	7917606	1.37		3.9					Oct-08
187104	787352	7917485	0.43		4.2			0.80	0.19	Oct-08
77890	787152	7917707	0.15		39.2	1.3		3.79	0.24	May-09
187108	786607	7915816	0.08		217	7.0 #		5.79		Oct-08
77897	786929	7918497	0.07		0.8			0.16		May-09
77891	787152	7917707	0.06		63.1	2.0		3.78	0.66	May-09
77893	787037	7918077	0.06		3.3			0.41	0.16	May-09
77892	787037	7918077	0.04		18.8			2.68	0.59	May-09
77901	786806	7918073	0.04		3.1					May-09
77898	787442	7918192	0.04		0.8		1.74		0.24	May-09
77895	787104	7918222	0.03		20.7			3.76	0.27	May-09
77896	787039	7918290	0.03		6.9		16.70		2.29	May-09
77894	787038	7918049	0.03		0.9		0.11	0.20	0.66	May-09
77899	787528	7919265	0.03		<0.5					May-09
187107	787149	7920718	0.03		<0.5					Oct-08
187103	787352	7917485	0.02		3.4			2.20	0.15	Oct-08
77900	787528	7919265	0.01		0.5		0.11			May-09
187102	787365	7917412	0.01		<0.5			0.16		Oct-08

Coordinate Datum – GDA94 (Zone 54)

SE54-12 Georgetown (1:250k mapsheet)
7660 Forsayth (1:100k mapsheet)

Analyses by ALS-Chemex (Townsville)

Gold by Au-AA25 (* rpts Au-DIL)
Silver by ME-ICP61 (# rpts Ag-OG62/62h)
Cu-Pb-Zn by ME-ICP61 (rpts OG62/62h)
(only Cu-Pb-Zn results >0.1% shown)