



PROJECTS- AUSTRALIA

ROBINSON RANGE  
IRON ORE

QUEENSLAND  
MUSGRAVES

ABOUT

PepinNini Minerals Limited is a diversified ASX listed Exploration Company focused on developing and discovering major new mineral deposits. The Company has secured strategically located exploration tenements in the Musgrave Province of South and Western Australia, the Woolgar Goldfield/Georgetown Inlier of North Queensland and the Robinson Range Iron Ore Province of Western Australia. A portfolio of prospective exploration tenements has recently been established in Argentina.

DIRECTORS

**Rebecca Holland-Kennedy**

Managing Director

**Philip Clifford**

Technical Director

**Robert WeiSun**

Non-Executive Director

**Sarah Clifton-Brown**

Finance Director

**Justin Nelson**

Company Secretary

CONTACT

PepinNini Minerals Limited  
ABN 55 101 714 989

Level 6, 108 King William Street,  
Adelaide SA 5000  
TEL: +61 (0)8 8218 5000  
FAX: +61 (0)8 8212 5717  
EMAIL: admin@pnn-adelaide.com.au

FURTHER INFORMATION

**Ms Rebecca Holland-Kennedy**

Managing Director

TEL: +61 (0)8 8218 5000

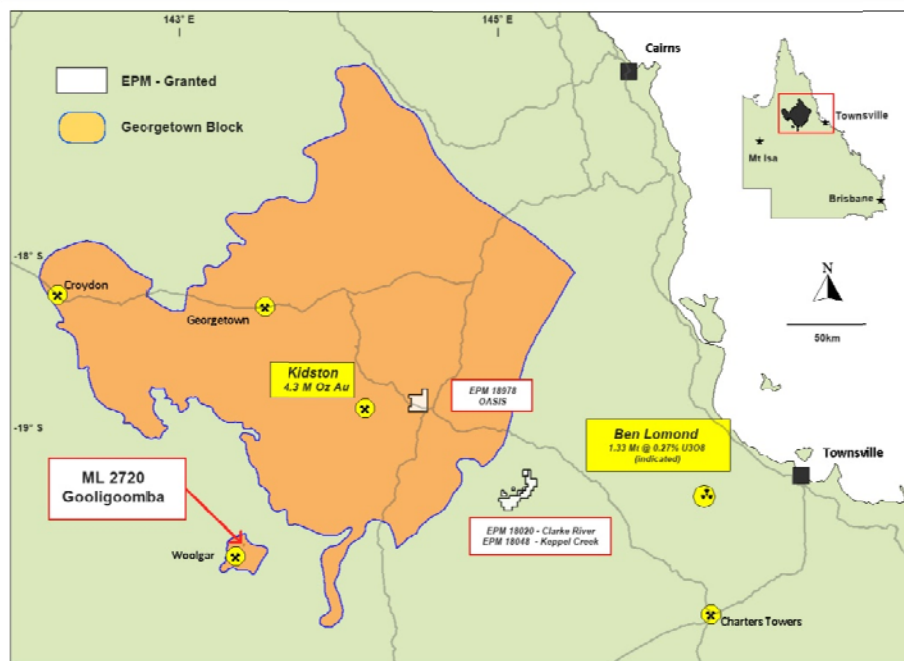
www.pepinnini.com.au



## Divestment of non-core Assets and consolidation of Queensland Project

**PEPINNINI MINERALS LIMITED (ASX: PNN) wish to announce the sale of Queensland mining lease ML2720 Gooligoomba and the surrender of tenement EPM 15469 The Gilbert.**

As part of a strategy to divest non-core assets announced in October 2012, PepinNini Minerals is pleased to advise that it has agreed to the sale of Mining Lease 2720 in North Queensland for the purchase consideration of \$40,000. The mining lease covers 0.83Km<sup>2</sup> located near Woolgar, inland from Townsville.



**Figure 1 - Queensland Tenements - PepinNini Minerals Ltd**

As part of this consolidation of the Queensland project tenement EPM 15469 The Gilbert covering 13km<sup>2</sup> has been surrendered.

The sale of the Mining Lease and tenement surrender will allow PepinNini to concentrate its exploration efforts on its key projects in the Musgrave Province of South Australia and Western Australia and to progress its Argentinean Project.

For further information please contact:  
Ms Rebecca Holland-Kennedy  
Managing Director, PepinNini Minerals Limited