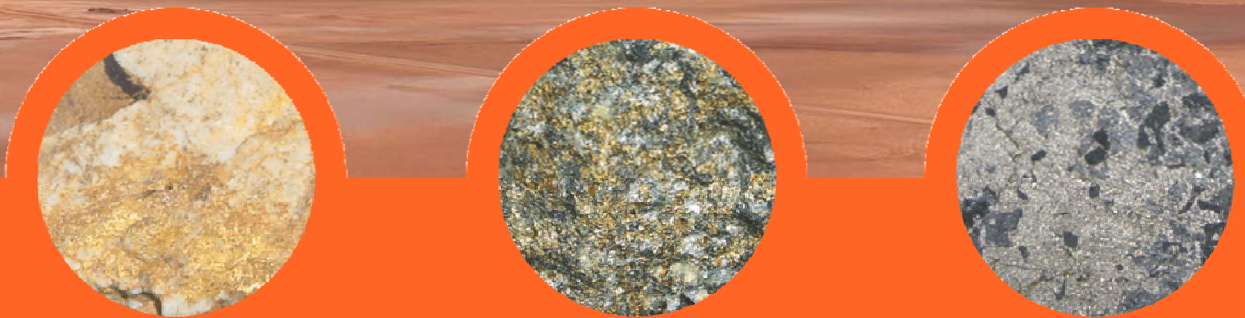




Rebecca Holland Kennedy
Managing Director



PepinNini: Breaking New Ground In Minerals Exploration
RIU Melbourne, 30 Sep 2015

We Explore



pepinnini.com.au

Active Exploration : the only way to find something

- ❑ *Majority of discoveries ie 80% since 2005 made by junior explorers*
- ❑ *Current discovery rate inadequate for future needs*
- ❑ *PepinNini continues to explore actively and with innovation*
- ❑ *Self sufficient explorer with company owned drill rigs and camp*
- ❑ *Recently completed Geophysics and geochemical sampling with anomalous results*
- ❑ *Drilling planned over next months – momentum building*



We Explore



PepinNini
Minerals Limited

Where we are exploring – Portfolio update

Diversified exploration assets in areas of great potential



Commodity asset diversity means a resilient PepinNini

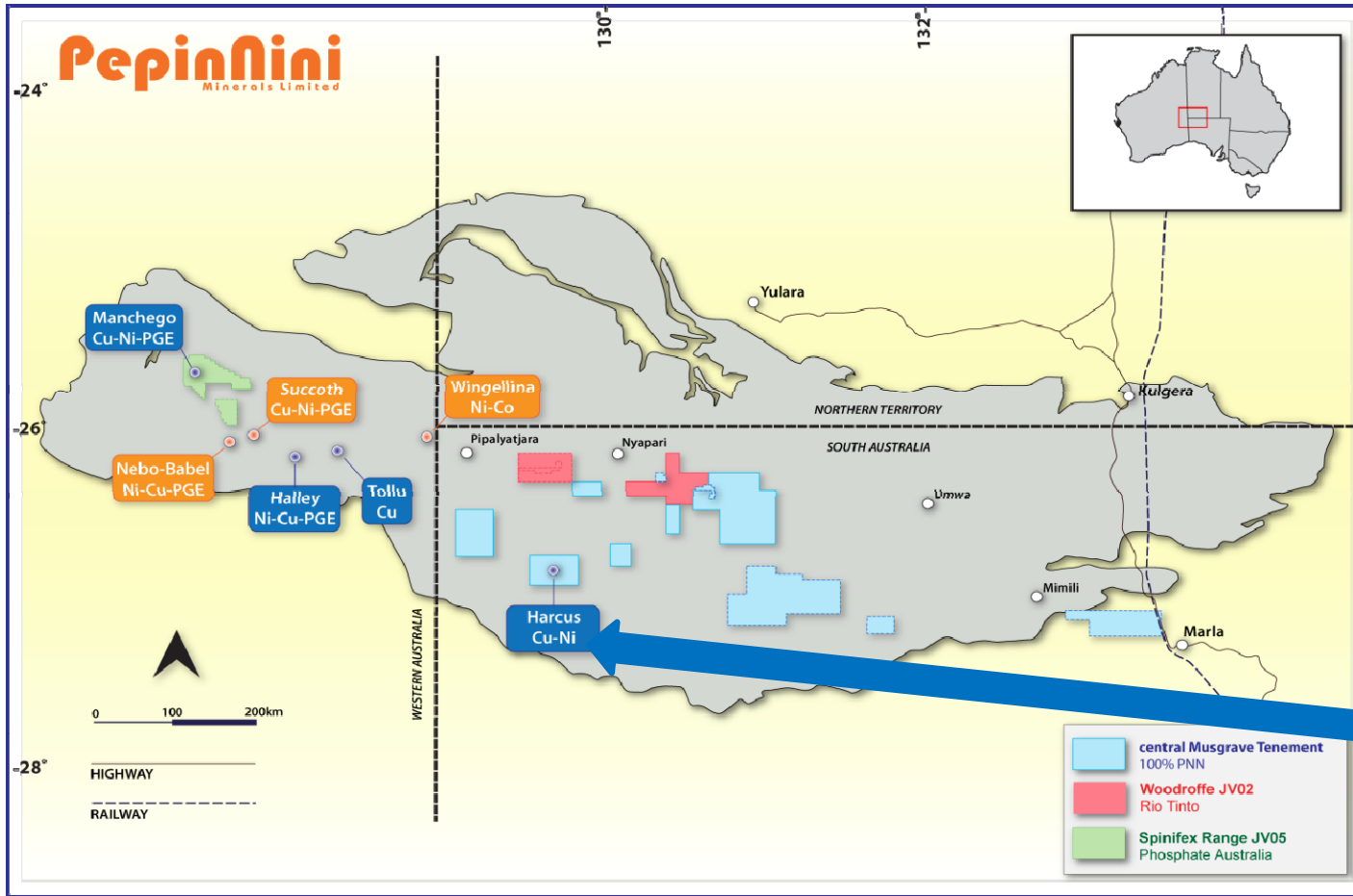


We Explore

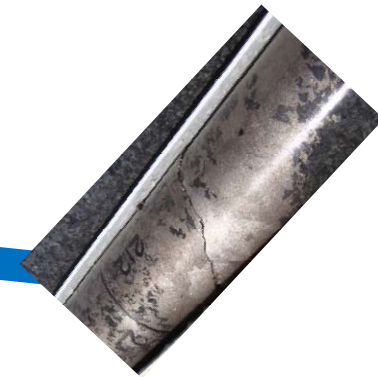


PepinNini
Minerals Limited

Musgrave: Australia's last untapped geological resource



- Prospective for Copper, Nickel and Platinum Group Elements(PGEs)
- PNN strategic foothold in ancient terrain



Mt Marcus
0.3% to 0.7%Cu, 0.3% Ni



We Explore

Pepinini
Minerals Limited

PepinNini Camp – Cooperinna, SA



We Explore

PepinNini
Minerals Limited

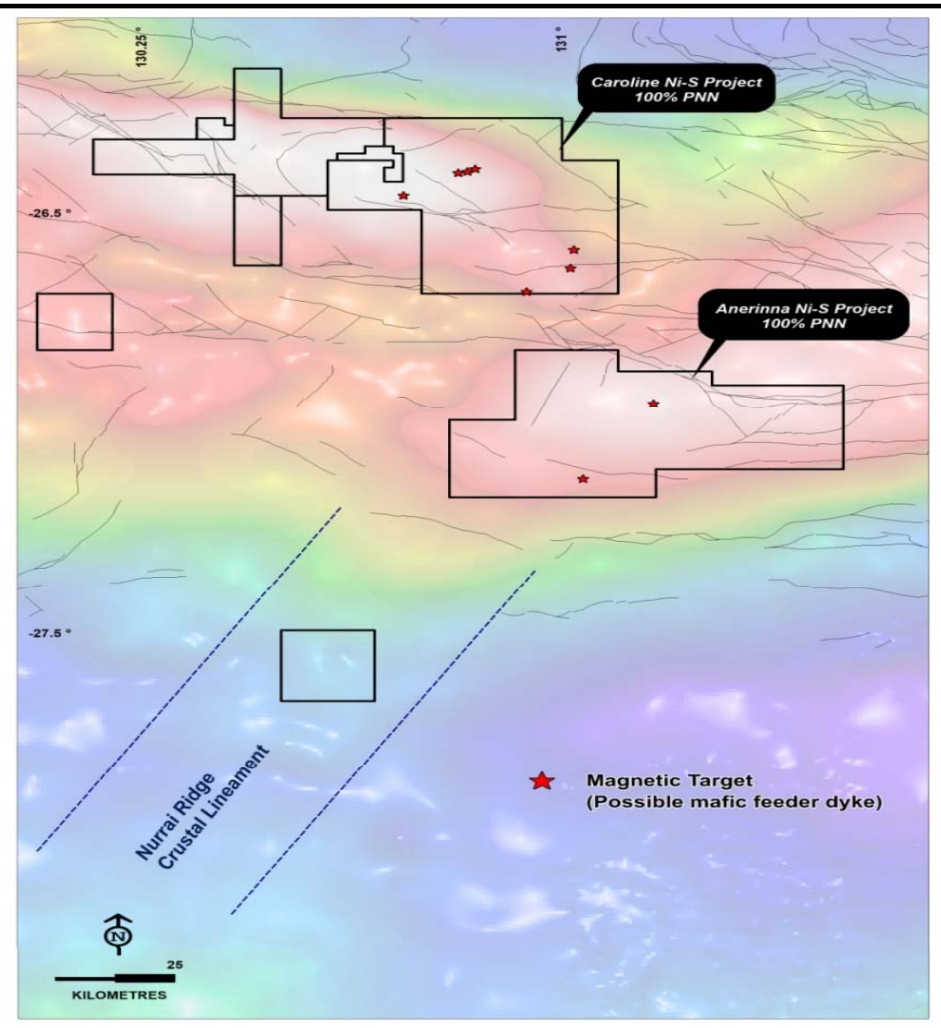
Priority Central Musgrave project: Caroline & Anerinna

Favorable geological setting

- ☐ Nurrui Ridge crustal structure
- ☐ Untested gravity lineament
- ☐ Multiple magnetic 'bulls-eye' targets identified (possible Ni-Cu host rocks)

Highly promising, largely unmapped

- ☐ No existing aerial magnetic (AEM) surveys of region



PepinNini vacuum drill rig - regolith sampling

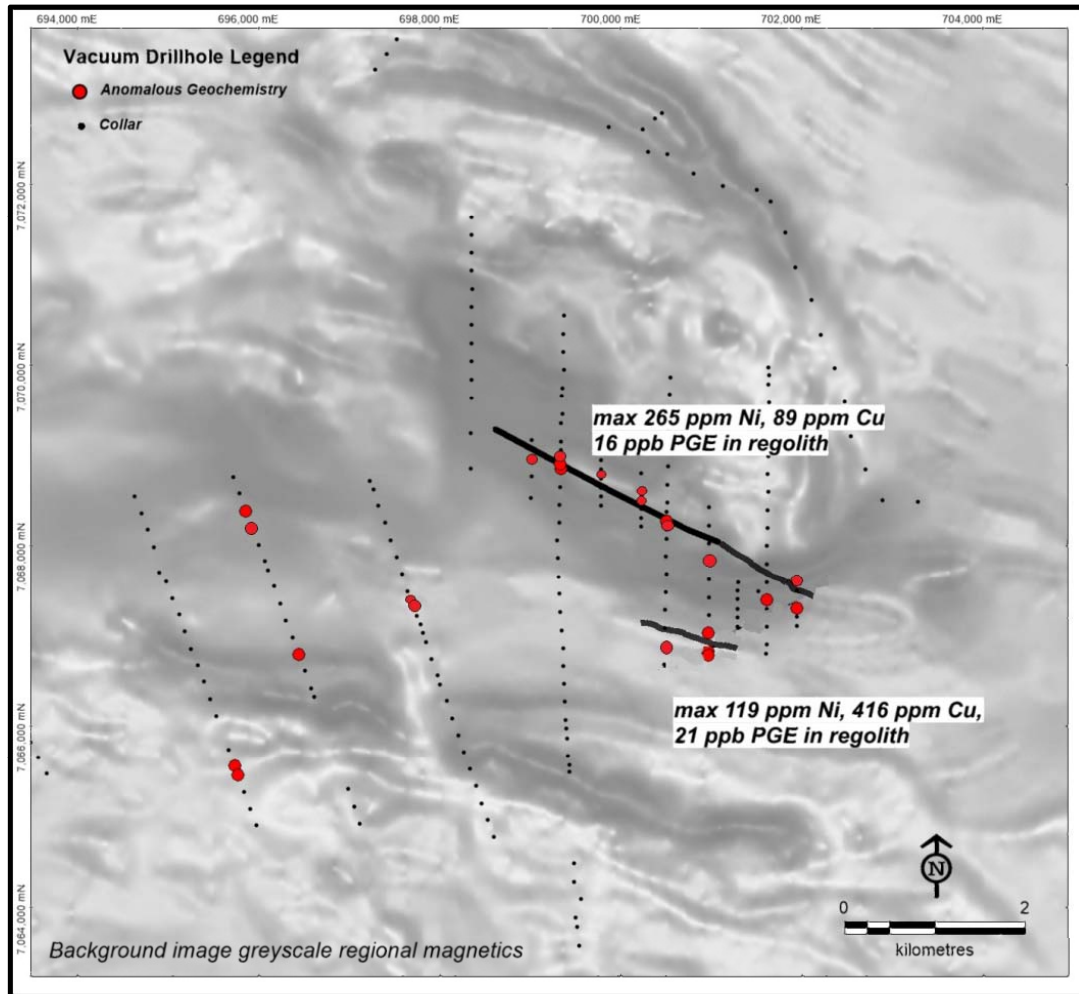


PepinNini
Minerals Limited



We Explore

Central Musgrave Caroline Project



Promising results from shallow regolith drilling

- ❑ 253 holes - 3,004m in total
- ❑ Interpreted as mafic intrusives
- ❑ Positive Ni-Cu-PGE geochemistry

Priority AEM targets identified

- ❑ Expect surveys to commence Q4
- ❑ Will test massive Ni-Cu sulphide beneath shallow cover

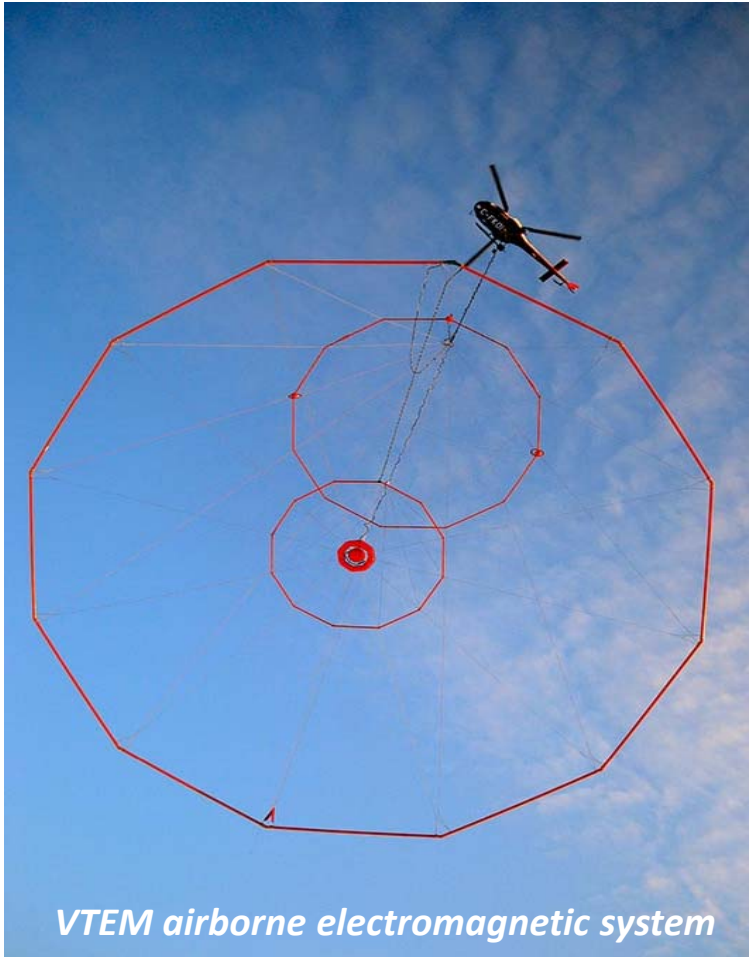


We Explore



Pepini
Minerals Limited

Partnering with CSIRO to refine Musgrave targets



CSIRO R&D collaboration established 2014

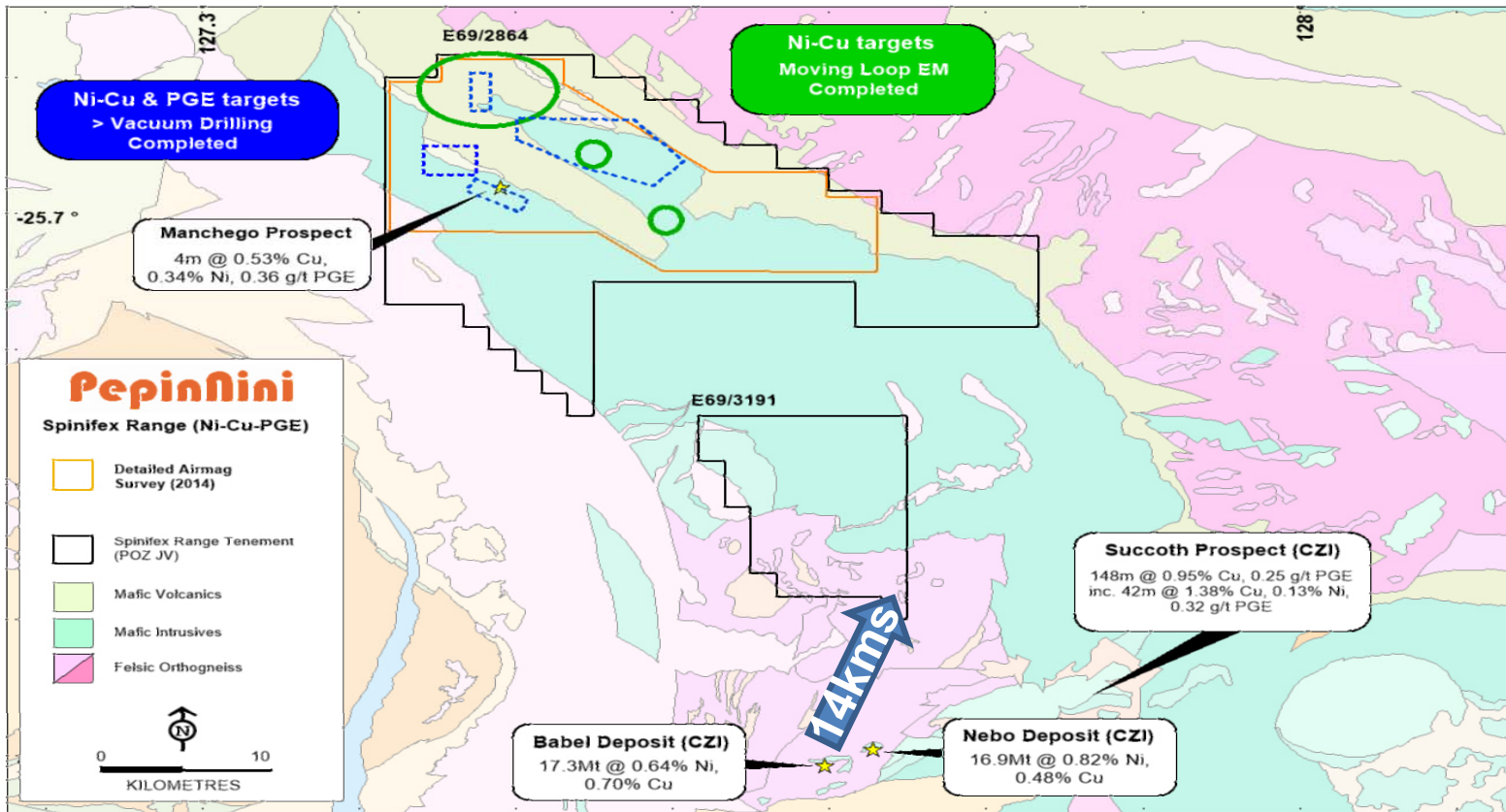
- ❑ Scientific underpinning for exploration strategies in Musgrave
- ❑ Co-funding by PepinNini, CSIRO and SA Dept of State Development(DSD)
- ❑ Assists project-scale area selection – *Where to look*
- ❑ Testing innovative geophysical techniques – *How to Look*



We Explore

PepinNini
Minerals Limited

West Musgrave: Targeting Ni-Cu and PGE



Prospectivity options

- Nebo-Babel type Ni-Cu deposits

Manchego: 4m @ 0.53% Cu, 0.34% Ni, 0.36 g/t PGE

- Reef-style PGE

11 magnetite seams prospective for PGEs

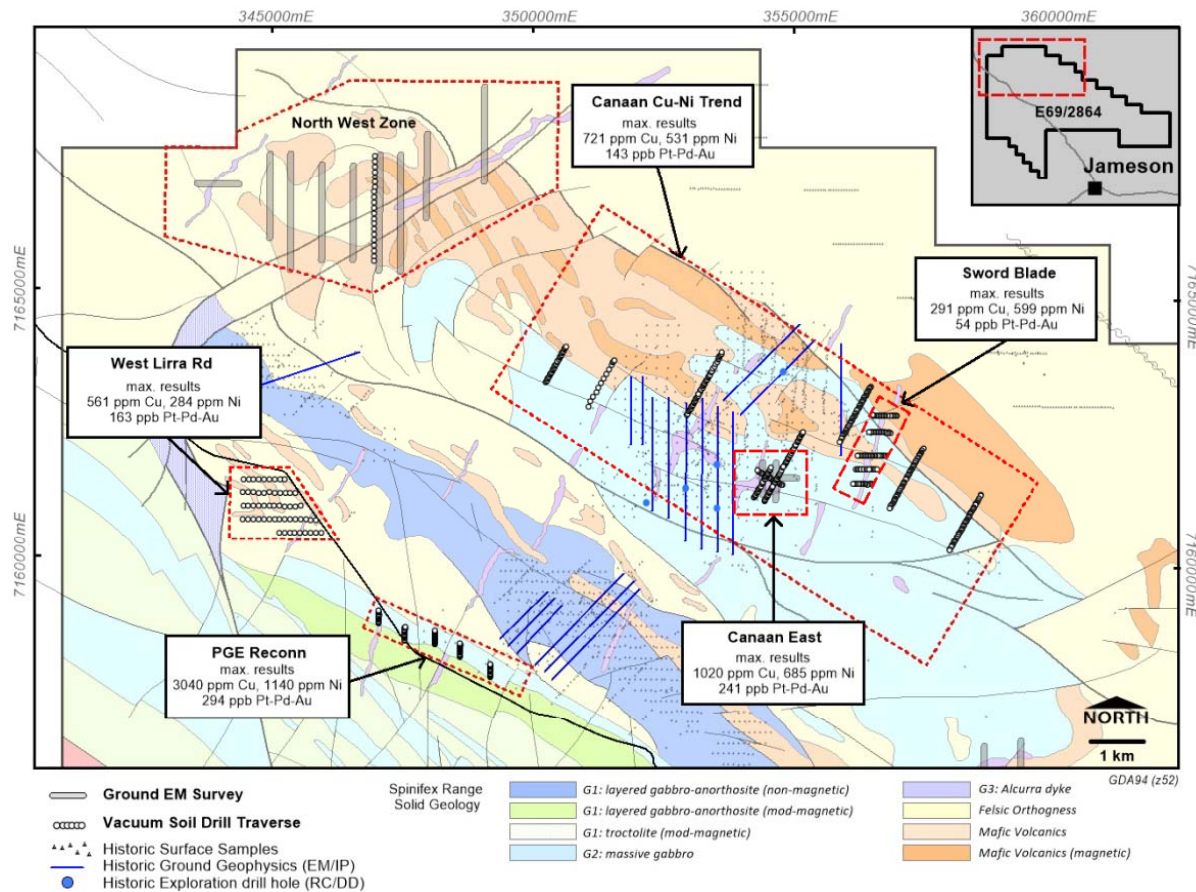
Up to 2.14 g/t PGE, 0.25% Cu in surface samples



We Explore

Pepinini
Minerals Limited

Completed Vacuum Drill testing



Vacuum drill testing of priority Ni-Cu and PGE targets completed

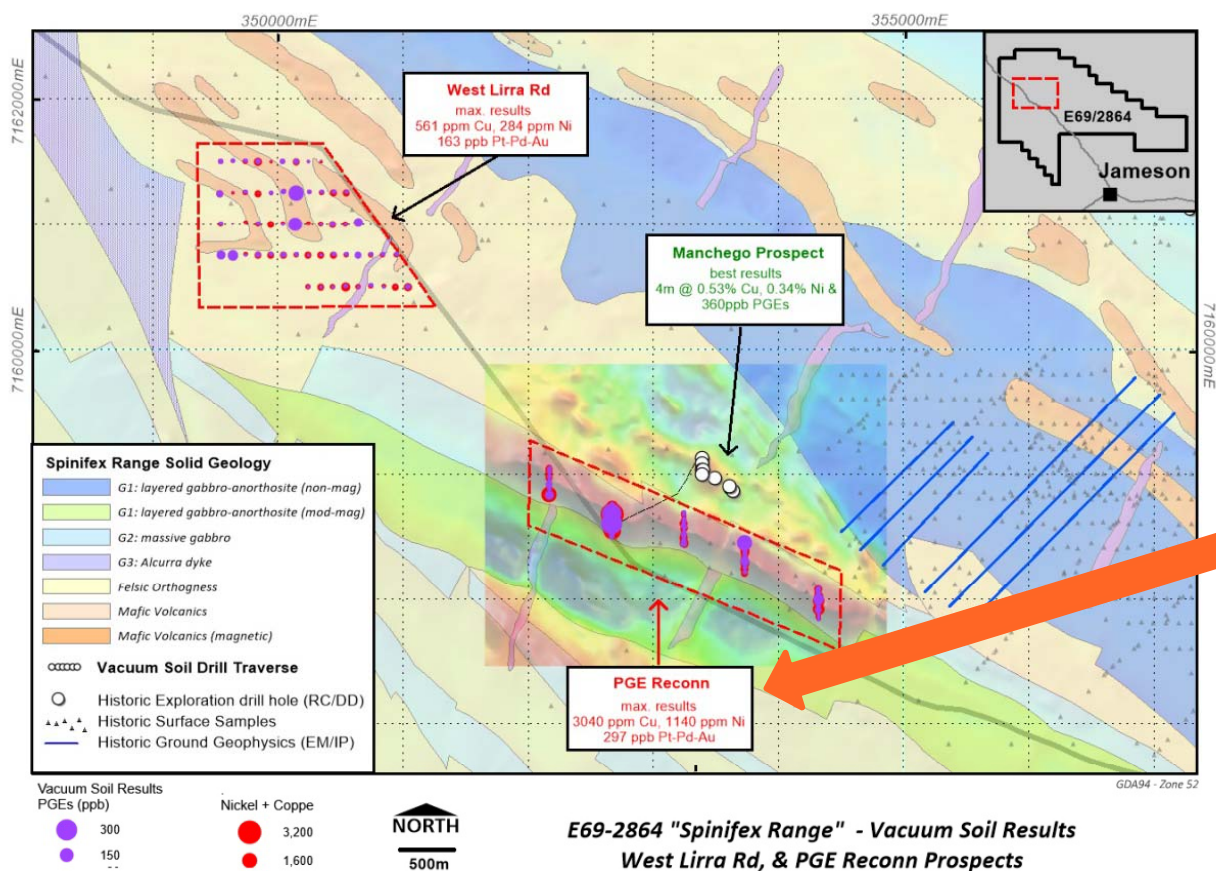
- ❑ 622 holes
- ❑ 3,170 metres
- ❑ Average depth 5.1metres



Pepini
Minerals Limited

We Explore

Anomalous Results



Vacuum drill testing of priority Ni-Cu and PGE targets completed

- ❑ 3,020 ppm Copper
- ❑ 1,140 ppm Nickel
- ❑ 294 ppb Platinum, Palladium & Gold



Pepini
Minerals Limited

We Explore

Next stage - Diamond drilling testing



We Explore

Relocation from Cooperinna to Caroline



Pepinini
Minerals Limited

We Explore



Positive engagement with Traditional Owners



Good relations established
between PepinNini and
Traditional Owners

Engagement
ongoing around
Musgrave
projects

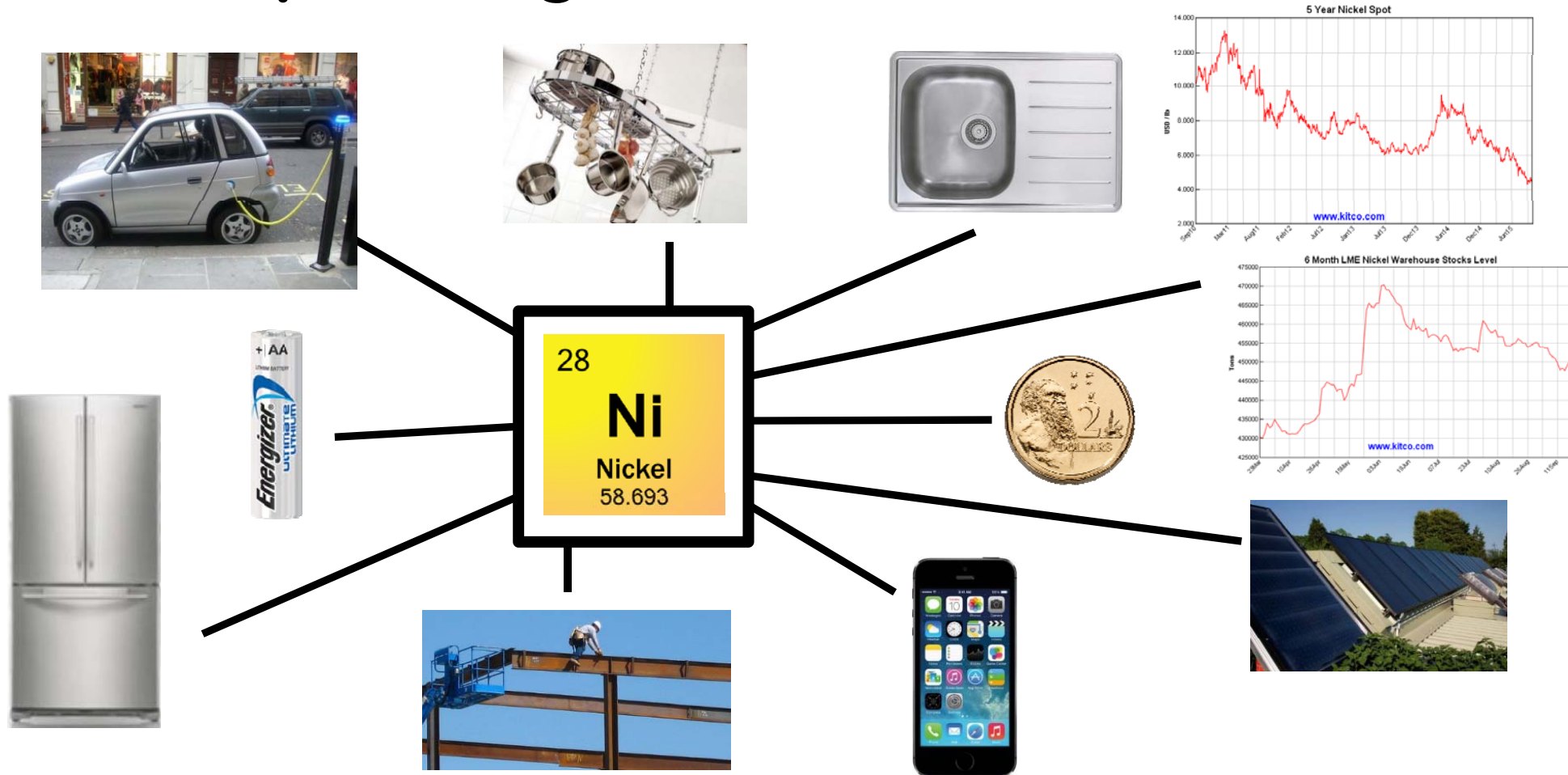


We Explore



PepinNini
Minerals Limited

Nickel – powering the mobile revolution



We Explore

Pepinini
Minerals Limited

Corporate snapshot – 30 June 2015

ASX Code	PNN
Shares on issue	195,047,948
Options on issue	8,100,000 (unquoted)
No. shareholders	1,566
Top 20 shareholders	69.4% of capital
Working capital	\$1.7m
Funds raised from equity 2014-15	\$1.24m
Funds raised from asset sales 2014-15	\$2.34m
Exploration expenditure 2014-15	\$1.58m



We Explore

Pepinini
Minerals Limited

An active explorer, poised to deliver

- ✓ ***Strategic tenement holdings***

Large areas, promising geology, strategic minerals (Ni, Cu, PGE)

- ✓ ***Technical innovation***

CSIRO partnership for accelerated targeting

- ✓ ***Cost-effective operations***

PepinNini-owned and operated drilling equipment and field camp, co-funding from SA DSD and CSIRO

- ✓ ***Momentum building***

Ambitious target-generation and drill-test program planned for Q4/2015-Q1/2016



We Explore



PepinNini
Minerals Limited

Thank you



Disclaimer and Competent Persons Statement

- The information in this presentation is published to inform you about PepinNini Minerals Limited and its activities. All reasonable effort has been made to provide accurate information, but we do not warrant or represent its accuracy and we reserve the right to make changes to it at any time without notice.
- To the extent permitted by law, PepinNini Minerals Limited accepts no responsibility or liability for any losses or damages of any kind arising out of the use of any information contained in this presentation. Readers are advised to consult a stockbroker or professional adviser before making any investment decisions.
- The information in this presentation that relates to Exploration Results and Mineral Resources is based on information compiled by Philip Clifford BSc MAusIMM. Mr Clifford is the Technical Director of PepinNini Minerals Limited and has sufficient experience which is relevant to the style of mineralisation and type of deposit under consideration to qualify as a Competent Person as defined in the 2012 edition of the "Australasian Code for Reporting of Exploration Results, Mineral Resources and Ore Reserves". Mr Clifford consents to the inclusion in the report of the matters based on his information in the form and context in which it appears.



We Explore

PepinNini
Minerals Limited

We Explore



pepinnini.com.au